

NEWSLETTER

#03/2014

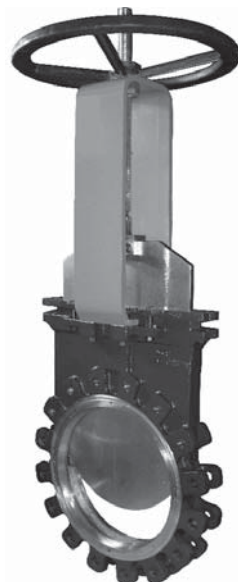
KEEP UP WITH THE NEWS!

LOHSE can now offer an increased range of products

Our established valves, made of corrosion- and acid-resistant stainless steel with a two part easy to maintain housing, are perfect for the control and closing of pure or aggressive substances. Whereas valves made of cast iron are quite good for non-aggressive substances plus they are available at a considerably lower price level we enlarged our range of products.

Shut-Off Valves type GGNA of cast iron or type EGNA of cast stainless steel nominal diameters from 50 – 1200 mm

In detail, these wafer design valves are built up of a cast monoblock and for this reason they are robust and durable. They are suitable for the closing of water- and material-bearing piping. The GGNA type all made of cast iron with an epoxy-coated housing offers good protection against corrosion, in respect of higher demands regarding corrosion resistance the cast stainless steel type EGNA can be offered.

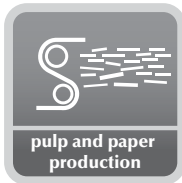


Valve of cast iron GGNA
with handwheel drive



Valve of Cast stainless steel
EGNA with pneumatic drive

Applications



Paper Industry

pulp and paper
production



Waste Technology

waste technology



Chemical Industry

chemical industry



Mining
Mineral Processing

mining
mineral processing



Water
Waste Water
Industrial Sewage Treatment

water
wastewater

Special models

For special application, we can supply special valves on request.

For more information please visit the download area of our homepage:
for GGNA: <http://www.lohse-gmbh.de/pdfs/en/259.pdf>
for EGNA: <http://www.lohse-gmbh.de/pdfs/en/260.pdf>
or contact our sales staff:



Uwe Herzog – Germany north and east

phone +49 (0) 172 / 9117648

uwe.herzog@lohse-gmbh.de



Thomas Krämer – Germany west

phone +49 (0) 176 / 18 95 22 15

thomas.kraemer@lohse-gmbh.de



Dietmar Parthum – Germany south + Switzerland + international

phone +49 (0) 7321 / 755-30

dietmar.parthum@lohse-gmbh.de



Fritz Weger – Germany south + Switzerland

phone +49 (0) 7321 / 755-31

fritz.weger@lohse-gmbh.de