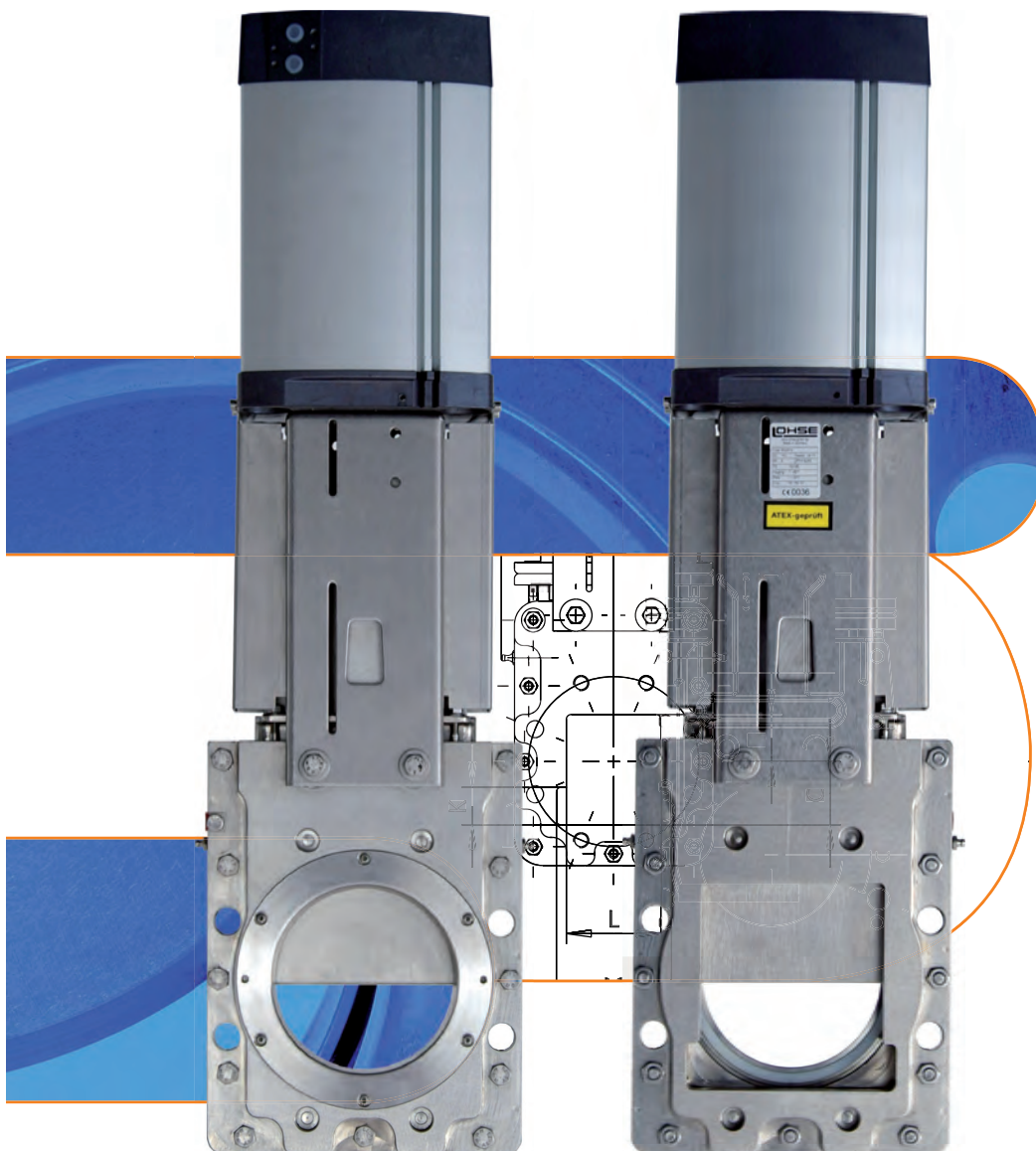


Valves of stainless steel

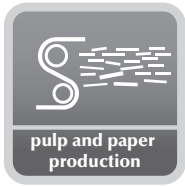
# Bulk- and Reject-Valves

## RQS/RQSV



MARTIN LOHSE GmbH  
Unteres Paradies 63 · D-89522 Heidenheim  
Postfach 1565 · D-89505 Heidenheim  
phone +49(0)7321 / 755-42 · fax +49(0)7321 / 755-97  
server.ab@lohse-gmbh.de  
www.lohse-gmbh.de

## Applications



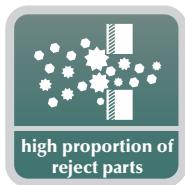
### General usage

- media with reject fraction (e.g. nails and staples)
- coarse-grained media
- granulates
- powders
- temperature range to 80 °C
- see table for permitted operating pressure

### Locations

- extraction devices for heavy soiling applications
- dumping and emptying devices for heavy soiling applications
- cleaning machines

## Media



## Operating elements – the LOHSE modular system

- Hns handwheel drive with non-rising stem  
P pneumatic cylinder

## Watertight

Leak test according to DIN EN 12266-02:2012-04  
Table A5, test medium liquid, leakage rate A

## Description

Valves of stainless steel with round inlet and square outlet.

Depending on the design or rather the application there is in the inlet of the valve a wear ring of stainless steel or a sealing ring of rubber.

In the case if a wear ring of stainless steel, the seating is brought about via a sealing ring of either PE, PTFE or bronze.

In the case of a sealing ring of rubber (SBR), the seating is effected by means of an inserted sealing lip. The sealing ring of rubber also takes in the seating of the flange connection on the inlet side.

The guides of broze are positioned in such a way that the medium passing through cannot build up in these. At the end of the guides there is a lager free area so that the medium doesn't pressed together inside the valve. To enabel a good discharge out of the valve, a square outlet has been selected.

## Materials

- housing 1.4571
- valve plate 1.4571
- flow sealing SBR, PE, PTFE or CuSn 12
- slide borders CuAL 10 Ni5Fe4
- wear ring 1.4571, SBR / 1.4571
- slide blocks CuSn6
- stuffing box gland 1.4551
- packing assembly Arostat / EPDM
- bracket 1.4301
- max. operating pressure
 

DN 100 – 200	8 bar
DN 250 – 300	4 bar
DN 400 – 600	2 bar
- max. operating temperature with
 

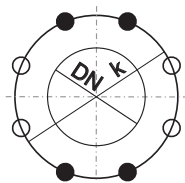
sealing ring of PE	80° C
wear ring of SBR	80° C
wear ring with	
bronze slide ring	120° C
sealing ring of PTFE	200° C

Type RQSV similar, but with hardened wear ring and valve plate.

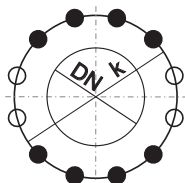
Flange bores for LOHSE RQS valves with metric tread

Inlet side  
according DIN EN 1092-1, PN 10

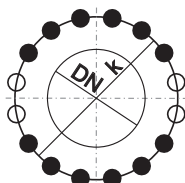
Outlet side  
according LOHSE standard



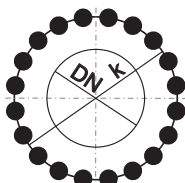
DN 100-200



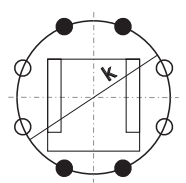
DN 250-300



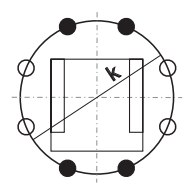
DN 400



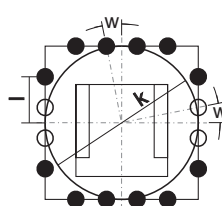
DN 500



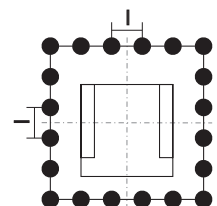
DN 100-200



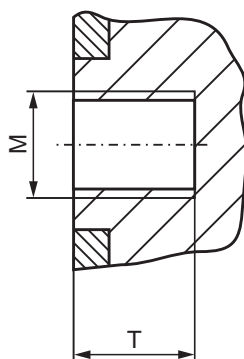
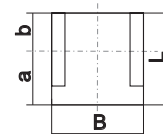
DN 250-300



DN 400



DN 500



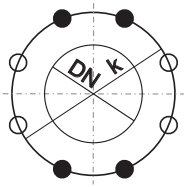
- Z = total number of holes
- Z1 = number of joint-holes
- Z2 = number of through-going bores
- T = usable depth of thread

DN [mm]	K [mm]	Z	M	T [mm]	Z1	Z2	l [mm]	L [mm]	B [mm]	a [mm]	b [mm]
100	180	8	M16	13	4	4		117	121	67	50
150	240	8	M20	18	4	4		163	169	88	75
200	295	8	M20	20	4	4		217	218	117	100
250	350	12 resp. 8	M20	22	8 resp. 4	4		267	273	142	125
300	400	12 resp. 8	M20	22	8 resp. 4	4		317	335	167	150
400	515	16	M24	24	12	4	170	418	439	218	200
500	620	20	M24	34	20	0	121	520	540	270	250

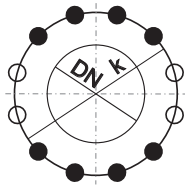
Flange bores for LOHSE RQS valves with UNC thread

Inlet side  
according ANSI B16.5 Class 150:

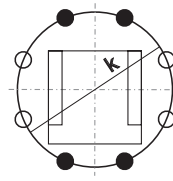
Outlet side  
according Standard



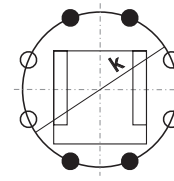
DN 100-200  
(4"-8")



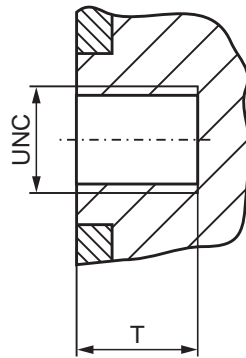
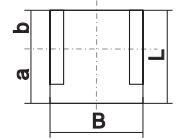
DN 250  
(10")



DN 100-200  
(4"-8")



DN 250  
(10")

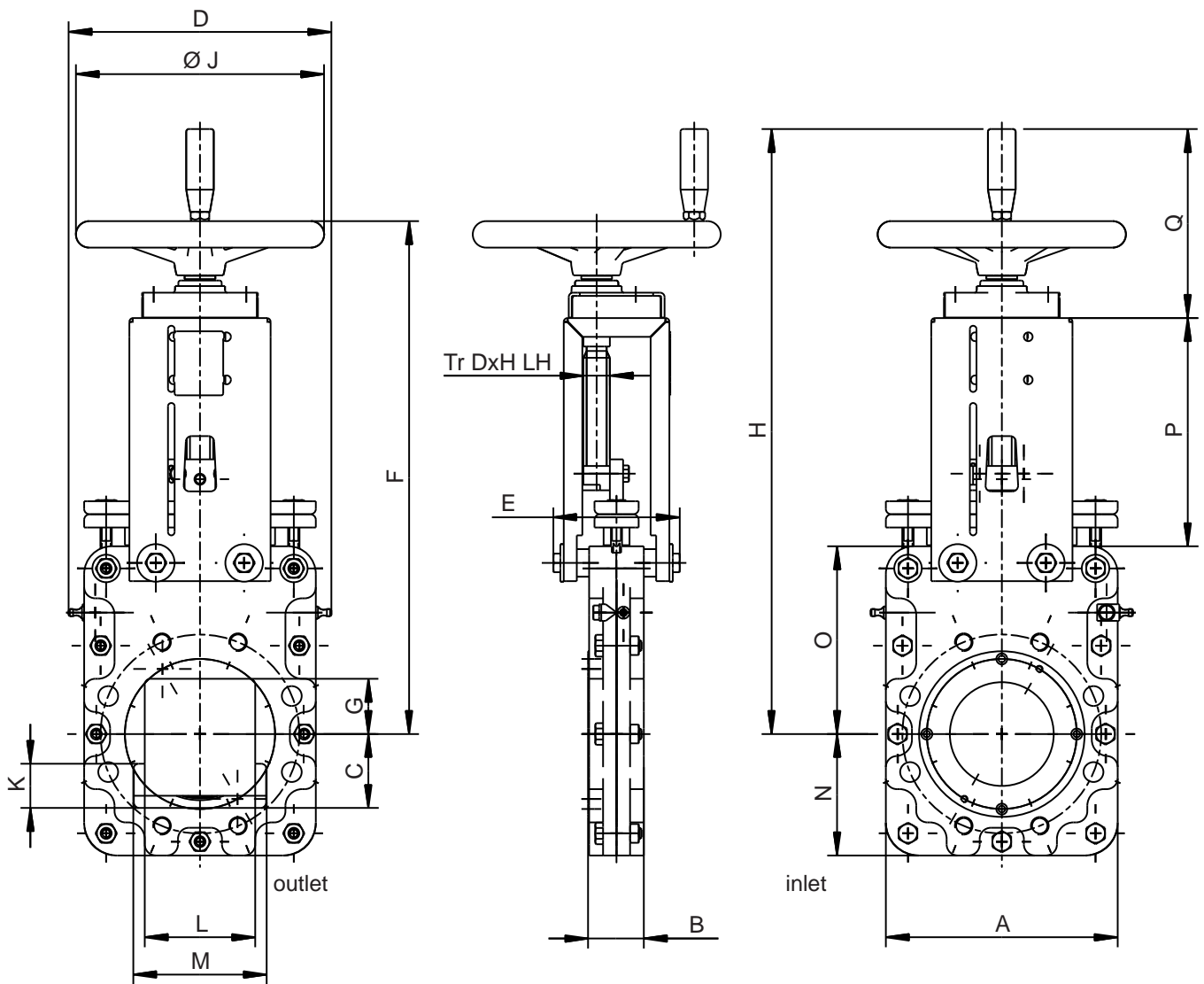


- Z = total number of holes
- Z1 = number of joint-holes
- Z2 = number of through-going bores
- T = usable depth of thread

DN [mm]	DN [inch]	K [inch]	Z	UNC [inch]	T [inch]	Z1	Z2	L [mm]	B [mm]	a [mm]	b [mm]
100	3 1/2	7	8	3/4	1/2	4	4	117	121	67	50
150	6	9 1/2	8	3/4	11/16	4	4	163	169	88	75
200	8	11 3/4	8	3/4	3/4	4	4	217	218	117	100
250	10	14 1/4	12 resp. 8	7/8	7/8	8 resp. 4	4	267	273	142	125

Reject-valve of stainless steel  
 circular inlet, square outlet  
 handwheel drive with non-rising stem

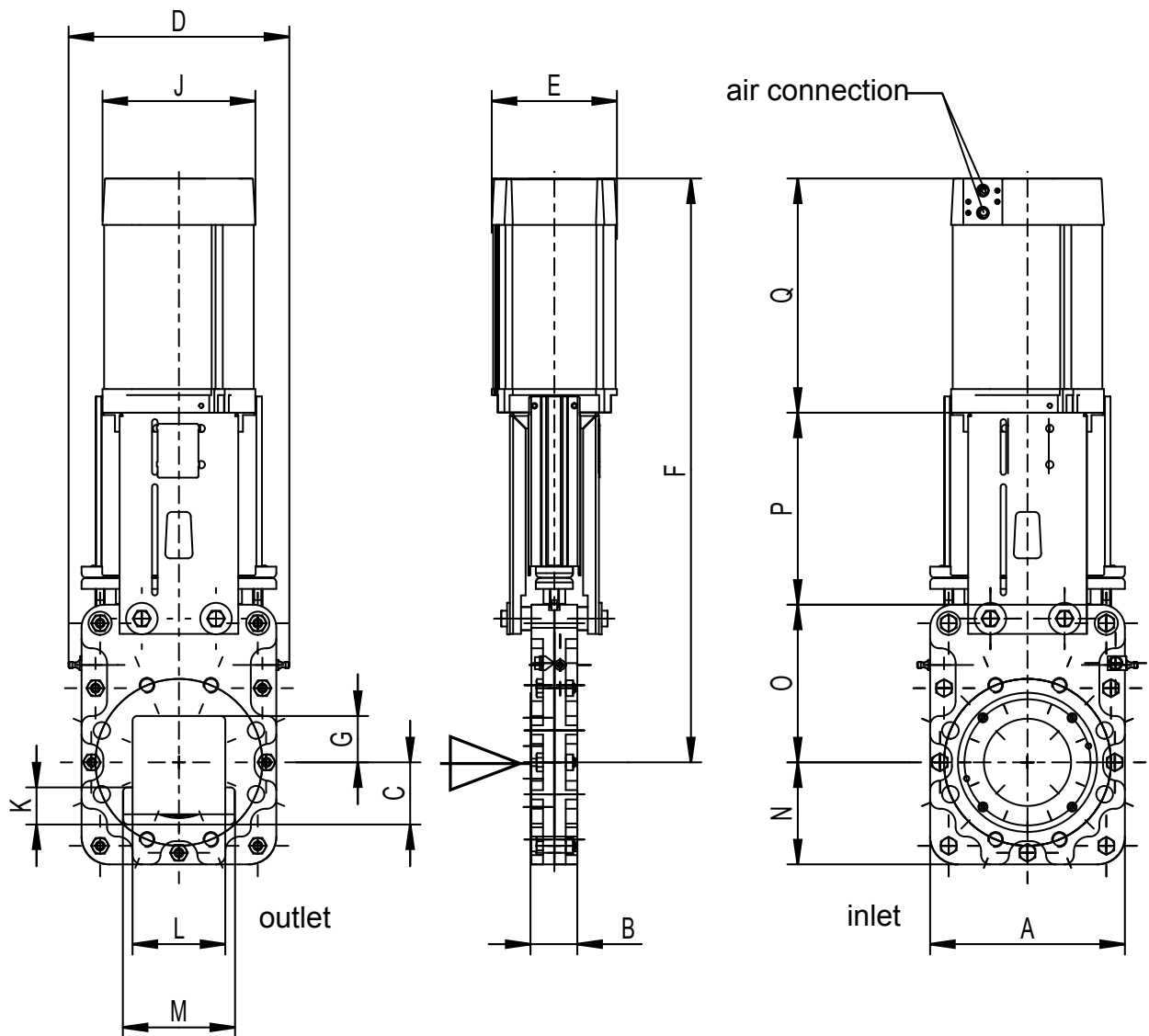
Type RQSVHns similar, but with hardened wear ring and valve plate.



DN	PS [bar]	A	B	C	D	E	F	G	H	Ø J	K	L	M	N	O	P	Q	Tr D x H LH
100	8	210	50,5	67	238	115	465	50	548	225	40	100	121	110	170	207	171	24 x 5
150	8	255	66	88	283	115	540	75	624	255	36	146	167	140	190	263	171	24 x 5
200	8	320	66	117	348	139	636	100	720	280	40	185	215	160	225	313	98	24 x 5

Dimensions in mm, flange bores to on request.  
 Further sizes on request.

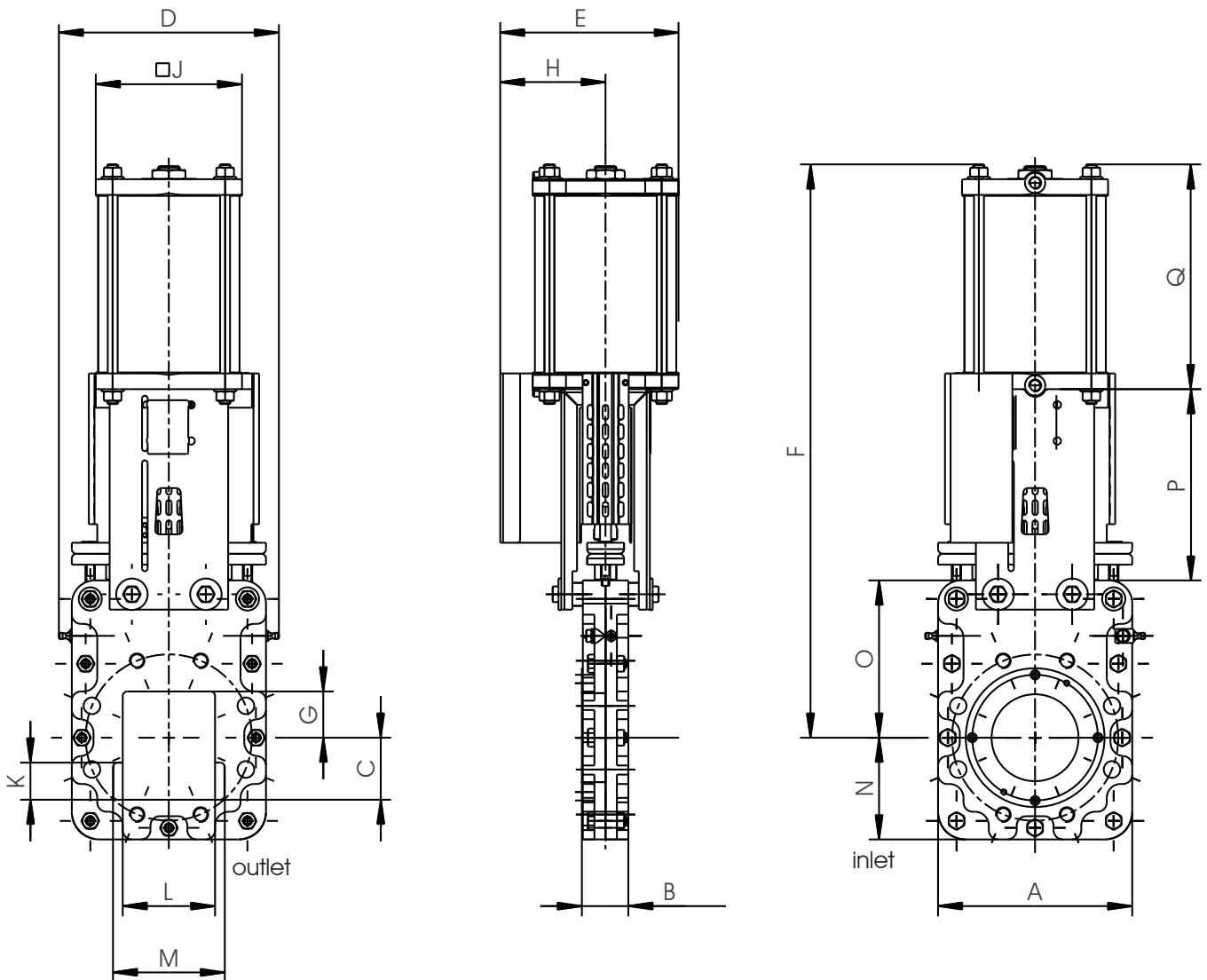
Reject valve of stainless steel  
 circular inlet, square outlet  
 pneumatic cylinder and protection guard  
 Type RQSVP/G similar, but with hardened wear ring and valve plate.



DN	PS [bar]	A	B	C	D	E	F	G	J	K	L	M	N	O	P	Q	cyl Ø	air connection	control pressure
100	8	210	51	67	238	145	740	50	165	40	100	121	110	170	207	253	125	G 1/4"	6 bar
150	8	255	66	88	283	178	763	75	204	36	146	167	140	190	263	310	160	G 1/4"	6 bar
200	8	320	66	117	348	215	926	100	244	40	185	215	160	225	313	388	200	G 1/2"	6 bar
250	8	352	80	142	352	215	1065	125	244	50	241	273	195	270	362	433	200	G 1/2"	6 bar
300	4	460	75	167	488	242	1274	150	283	65	304	334	235	340	419	515	230	G 1/2"	6 bar

Dimensions in mm, flange bores to on request; air connection acc.VDI/VDE 3845 (NAMUR).  
 Further sizes on request.

Reject valve of stainless steel  
 circular inlet, square outlet  
 pneumatic cylinder and protection guard  
 Type RQSVP/G similar, but with hardened wear ring and valve plate.



DN	PS [bar]	A	B	C	D	E	F	G	J	K	L	M	N	O	P	Q	cyl Ø	air connection	control pressure
400	2	570	92	218	598	318	1639	200	318	65	405	435	285	410	608	621	300	G 1/2"	6 bar
500	2	680	112	270	708	425	2024	250	425	65	510	540	345	510	725	789	400	G 3/4"	6 bar

Dimensions in mm, flange bores to on request.  
 Further sizes on request.



## Germany + Switzerland

**MARTIN LOHSE GmbH**  
Postfach 1565  
89505 Heidenheim  
Phone: +49 (0) 73 21 / 7 55-0  
Fax: +49 (0) 73 21 / 7 55-99  
server.ab@lohse-gmbh.de  
www.lohse-gmbh.de

## Australia, New Zealand, Indonesia, Singapore, Malaysia P.T. VOITH PAPER

Jl. Permata V Lot EE - 1  
Kawasan Industri KIIC  
Karawang 41361, INDONESIA  
Phone : +62 267 419 719  
Fax : +62 267 419 717

## Austria (pulp + paper industry, wastewater + wastewater treatment plants) + CZ, SK, SLO, SRB, HR, H

**Peter Reiter**  
Handel Mazzetti-Str. 85  
3100 St. Pölten  
Phone: +43 (0) 27 42 / 7 73 66  
Fax: +43 (0) 27 42 / 7 73 66  
fa.reiter@aon.at

## Austria

**Klinger Gebetsroither GmbH & Co KG**  
Am Kanal 8-10  
2352 Gumpoldskirchen  
Phone: +43 2252 60 71 00 3029  
Fax: +43 2252 60 71 00 3010  
gerhard.praxmarer@gebetsroither.at  
www.gebetsroither.at

## Belgium

**Hanwel Belgium N.V.**  
Winninglaan 15  
9140 Temse  
Phone: +32 (0) 3 / 7 11 03 53  
Fax: + 32 (0) 3 / 7 11 05 79  
info@hanwel.be  
www.hanwel.be

## Chile

**INTERTECH**  
Prat 116, Of 31  
Curicó, Chile  
phone +56.075.322033  
www.inter-tech.cl  
n.flores@inter-tech.cl

## People's Rep. Of China

**Shanghai Fier Mechanical Co. LTD**  
Room B4, 15/F HuaFu Bldg.  
No. 585 LongHua xi Rd.  
ShangHai, China 200232  
Phone: +86-21-54591038  
Fax: +86-21-54240616  
MP: 13611665381  
shfier@163.com  
www.fier.com.cn

## Denmark

**Uni-Valve A/S**  
Sydvestvej 138 – 140  
2600 Glostrup  
Phone: +45 (0) 43 43 82 00  
Fax: +45 (0) 43 43 74 75  
mail@uni-valve.com  
www.uni-valve.com

## Finland

**Klinger Finland Oy  
Aseko**  
Tinankuja 3  
02430 Masala  
Phone: +358 (0) 10 400 10 12  
Fax: +358 (0) 10 400 12 00  
info@aseko.fi  
www.aseko.fi

## France, MA, TN, DZ T.N.P.

30 avenue Galliéni  
94100 Saint-Maur  
Phone: +33 (0) 1 / 55 97 11-11  
Fax: +33 (0) 1 / 48 83 52 07  
contact@tnp.fr  
www.tnp.fr

## Great Britain

**Voith Turbo Ltd.**  
6 Beddington Farm Road  
Croydon, Surrey CRO, 4XB  
Phone: +44 (0) 2 08 / 6 67 30 13  
Fax: +44 (0) 2 08 / 6 67 04 03  
matthew.healy@voith.com

## Greece

**Niko Mikopoulos, BSc.**  
Metron Str. 28  
17123 Nea Smyrni-Athens  
Phone: +30 6 98 305 10 70  
n.mikopoulos@nm-bc.com

## India

**Antrieb Technik Private Limited**  
59 (old 359) Sidco Industrial Estate  
Ambattur  
Chennai-600 098  
Tamilnadu / INDIA  
Phone: +91 (44) 262 – 58303  
Fax: +91 (44) 2819 – 3718  
antrieb.technik@gmail.com

## Israel

**P.B.A Wiesner Agencies Ltd.**  
P. O. Box 4622  
Petach-Tikva 49277  
Phone: +972 (0) 3 / 9 05 21 11  
Fax: +972 (0) 3 / 9 05 21 10  
ofra@pba.co.il

## Italy

**Techno Paper S.R.L.**  
Viale Certosa 269  
20151 Milano (MI)  
Phone: +39 (0) 02 78627750  
Fax: +39 (0) 02 45471638  
info@techno-paper.com  
www.techno-paper.com

## Japan

**Voith IHI Paper Technology Co.Ltd.**  
River City M-SQUARE 7F  
2-1-6 Tsukuda, Chuo-ku  
1040051 Tokyo  
Phone: +81 3 6221 3108  
Fax: +81 3 6221 3126

## Korea

**C.S-Automation Co., Ltd. (Customer Satisfaction Automation)**  
#804 Sejung Technovalley  
279-5 Songjeong-Dong  
Heungdeok-Gu  
Cheongju-Si  
South Korea. 361-290  
Phone: +82 43 276 1332  
Fax: +82 43 278 1332  
changseol@korea.com

## Netherlands

**Hanwel B. V.**  
Jan Tinbergenstraat 209  
7559 SP Hengelo  
The Netherlands  
Phone: +31 74-2650000  
Fax: +31 74-2650001  
verkoop@hanwel.com  
www.hanwel.com

## Norway

**KSB Norge AS**  
Haugenveien 29  
1400 SKI  
Phone: +47 96 900 900  
firmapost@ksb.com  
www.ksb.com/ksb-no

## Philippines

**R. Dan and Co., Inc.**  
20 Alfonso St.  
Rosario  
Pasig City 1609  
Phone: +632 – 6558796  
Fax: +632 – 6562089  
ester.poe@robertdan.com.ph  
www.robertdan.com.ph

## Poland

**Waldemar Kulicki**  
ul. Heweliusza 37/4  
87-148 Papowo Toruńskie  
Phone: +48 56 / 6783399  
Fax: +48 56/ 6783880  
waldemar-kulicki@wp.pl  
www.wkulicki.eu

## Rep. of South Africa

**Voith Turbo (Pty) Ltd**  
P.O. Box 13171  
Witfield, 1467  
Gauteng, SOUTH AFRICA  
Phone: +27 11 418 4000  
Fax: +27 11 418 4080  
info.vtza@voith.com  
www.rsa.voithturbo.com

## Spain, Portugal

**CELPAP EQUIPOS, S.L.**  
C/Amposta, 14-18  
08174 Sant Cugat del Vallés  
(Barcelona)  
Phone +34 93 415 18 75  
celpap@celpap.com  
www.celpap.com

## Sweden

**PA-Ventiler AB**  
Sagbäcksvägen 3B  
43736 Lindome  
Phone: +46 (0) 31 / 99 25 00  
Fax: +46 (0) 31 / 99 25 03  
info@paventiler.se  
www.paventiler.se

## Taiwan

**E-Chen Engineering Co., Ltd.**  
3F-3, No. 151, Sec. 4,  
Hsin-Yi Road,  
Taipei, Taiwan, R.O.C.  
Phone: +886 (0) 22 / 7056185  
Fax: +886 (0) 22 / 7 04 59 67  
echen123@ms15.hinet.net

## Thailand

**Weston Myer Ltd.**  
8 Soi Seri-Thai 58  
Seri-Thai Road  
10510 Minburi Bangkok  
Phone: +66 (0) 2 / 3 74 58 69  
Fax: +66 (0) 2 / 3 75 – 11 79  
comm1@westonmyer.com

## Turkey

**Sanrep Kağıt San. ve Tic. Ltd. Şti.**  
Altıyol, Kuşdili Caddesi No:19/7  
H.Fazlıoğlu İş Merkezi  
34714 Kadıköy – İSTANBUL  
Phone: +90 216 345 40 48  
Fax: +90 216 330 73 12  
sanrep@sanrep.com  
www.sanrep.com

## USA, Canada, Mexico

**Voith Paper Inc.**  
2200 N. Roemer Rd.  
Appleton, WI 54912-2237  
Phone: +1 (0) 920 – 358 – 2486  
Fax: +1 (0) 920 – 221 – 8904  
igor.figureira@voith.com