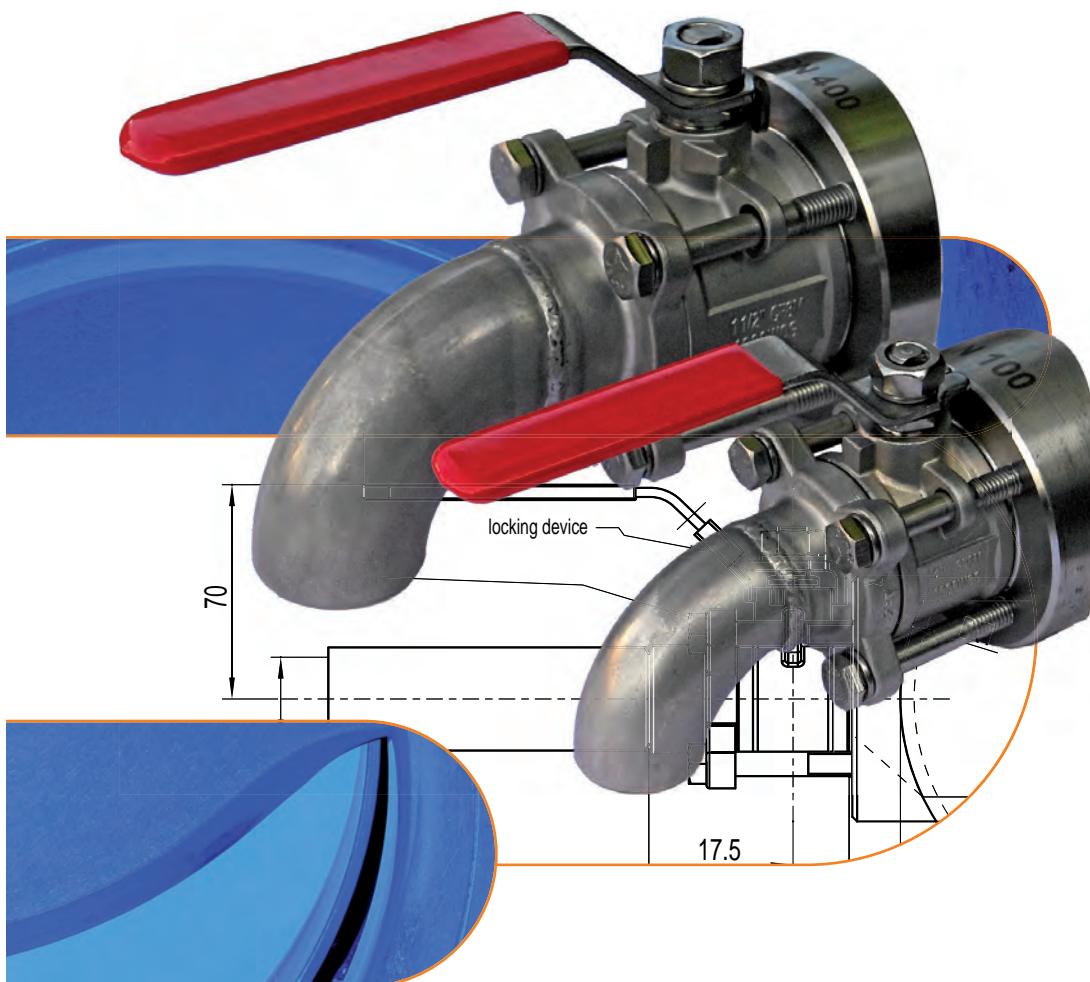


Sampling Valves of stainless steel



MARTIN LOHSE GmbH
 Unteres Paradies 63 · D-89522 Heidenheim
 phone +49 7321 755-42
 sales@lohse-gmbh.de
 www.lohse-gmbh.de

Sampling Valves of stainless steel

with blockflange

- **curved sampling valve with lockable hand lever**

PHB25k Hv DN 25 (1")	279
PHB40k Hv DN 40 (1 1/2")	280
PHB50k Hv DN 50 (2")	281
- **straight sampling valve with lockable hand lever**

PHB25g Hv DN 25 (1")	282
PHB40g Hv DN 40 (1 1/2")	283
PHB50g Hv DN 50 (2")	284

with weld-on nipple

- **curved sampling valve with lockable hand lever**

PHG25k Hv DN 25 (1")	285
PHG40k Hv DN 40 (1 1/2")	286
PHG50k H DN 50 (2")	287
- **straight sampling valve with lockable hand lever**

PHG25g Hv DN 25 (1")	288
PHG40g Hv DN 40 (1 1/2")	289
PHG50g H DN 50 (2")	290

spring return handle 291

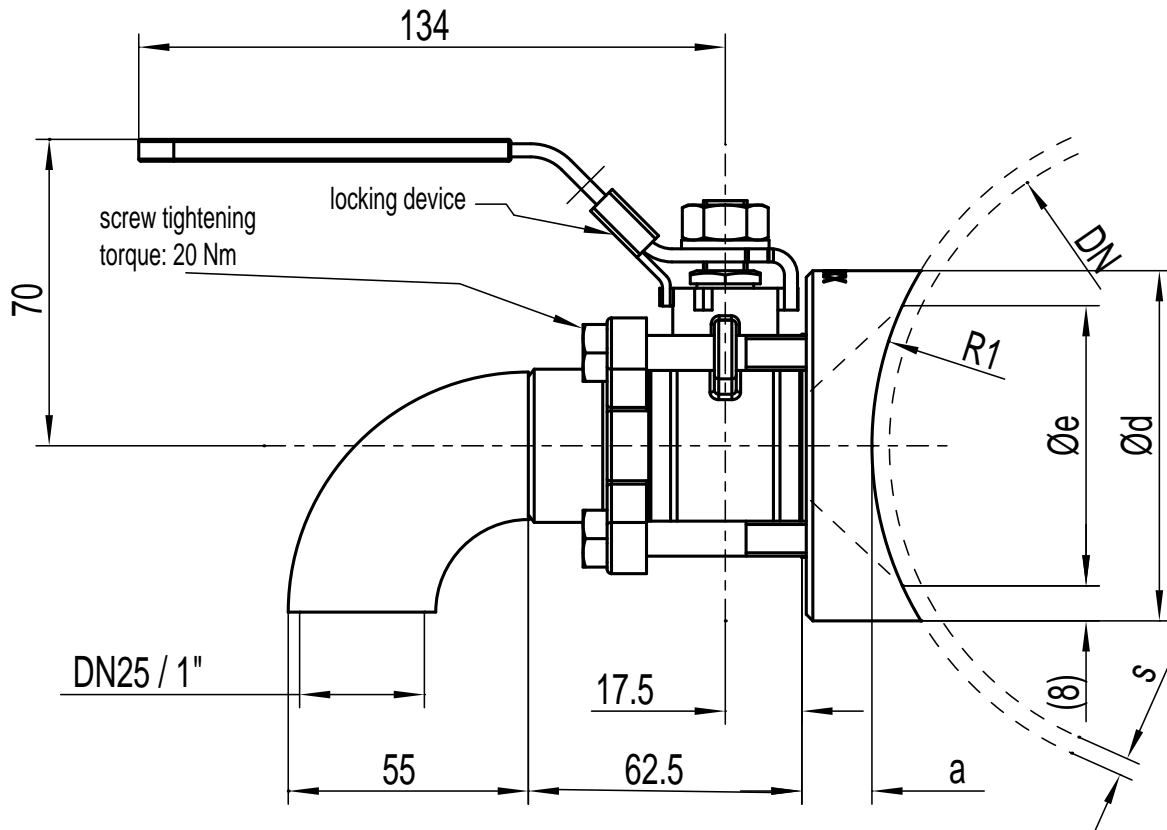
Legend

PH	= sampling valve
B	= block flange
G	= weld-on nipple
25 (z.B.)	= nominal size in mm
/100 (z.B.)	= pipe diameter in mm
k	= bent
g	= straight
Hv	= lockable hand lever
HFv	= lockable spring return handle
PD	= rotary actuator, pneumatic, double-acting

curved sampling valve DN 25 (1"), PN 40*

lockable hand lever

block flange for welding and grinding



DN pipe **	Typ	R1 [mm]	s [mm]	Ø e [mm]	Ø d [mm]	a [mm]
65	PHB25/65k Hv	34,5	2	39	55	24
80	PHB25/80k Hv	42	2	54	70	24
100	PHB25/100k Hv	52	2	64	80	14
125	PHB25/125k Hv	64.5	2	64	80	15
150	PHB25/150k Hv	77	2	64	80	16
200	PHB25/200k Hv	102.5	2.5	64	80	17
250	PHB25/250k Hv	128	3	64	80	18
300	PHB25/300k Hv	153	3	64	80	19
350	PHB25/350k Hv	178	3	64	80	20
400	PHB25/400k Hv	203	3	64	80	20
450 – 1200	PHB25/450–1200k Hv	300	4	64	80	20

Application:

Wherever no projecting edges or hollow spaces are allowed in pipes.

e.g. paper production:

- flow box
- accepted stock line

* welding in pipeline must comply with PN 40

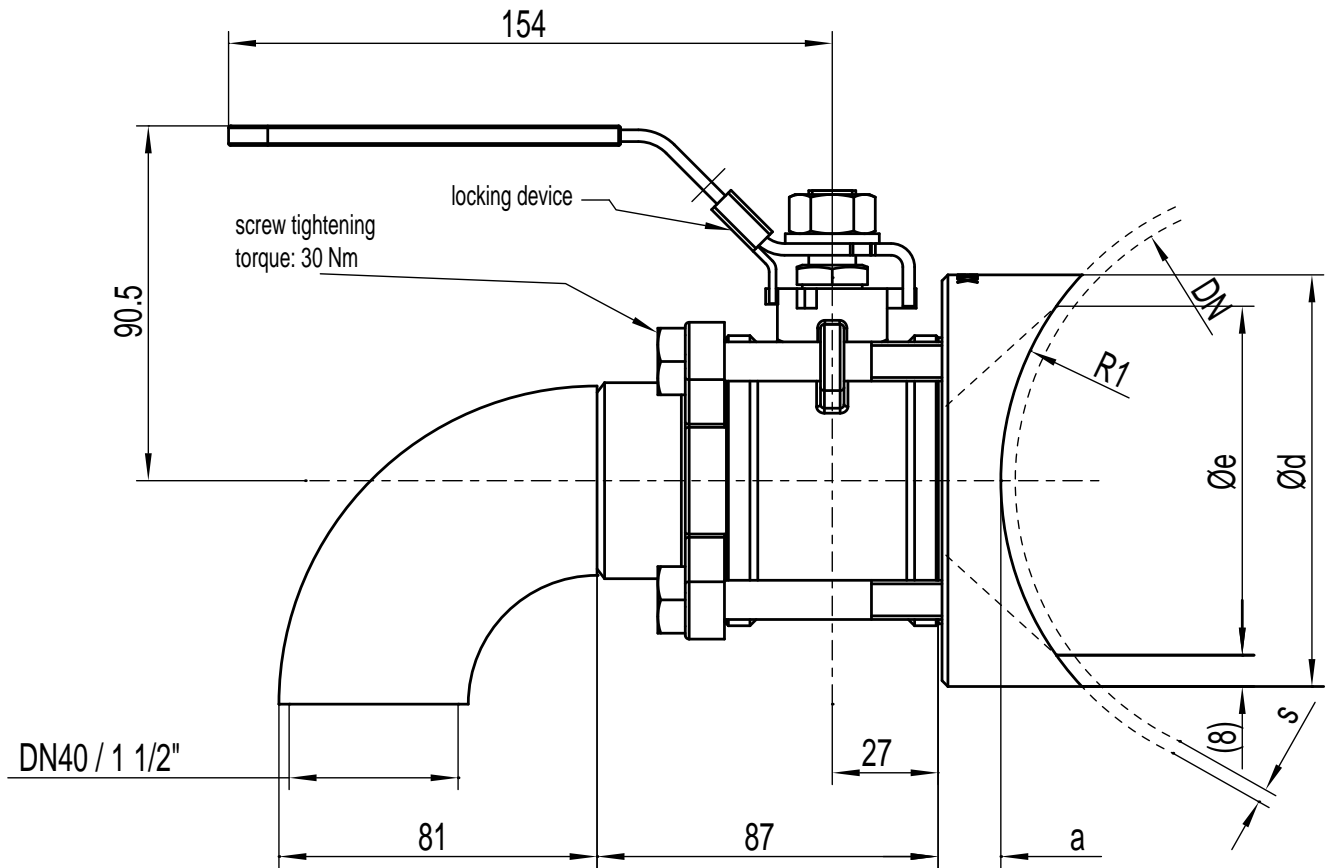
** DN pipe must be specified

s = material thickness of pipe

curved sampling valve DN 40 (1 1/2"), PN 40*

lockable hand lever

block flange for welding and grinding



DN pipe **	Typ	R1 [mm]	s [mm]	Ø e [mm]	Ø d [mm]	a [mm]
80	PHB40/80k Hv	42	2	54	70	28
100	PHB40/100k Hv	52	2	74	90	28
125	PHB40/125k Hv	64.5	2	89	105	15
150	PHB40/150k Hv	77	2	89	105	16
200	PHB40/200k Hv	102.5	2,5	89	105	17
250	PHB40/250k Hv	128	3	89	105	18
300	PHB40/300k Hv	153	3	89	105	19
350	PHB40/350k Hv	178	3	89	105	20
400	PHB40/400k Hv	203	3	89	105	20
450 – 1200	PHB40/450–1200k Hv	300	4	89	105	20

Application:

Wherever no projecting edges or hollow spaces are allowed in pipes.

e.g. paper production:

- flow box
- accepted stock line

* welding in pipeline must comply with PN 40

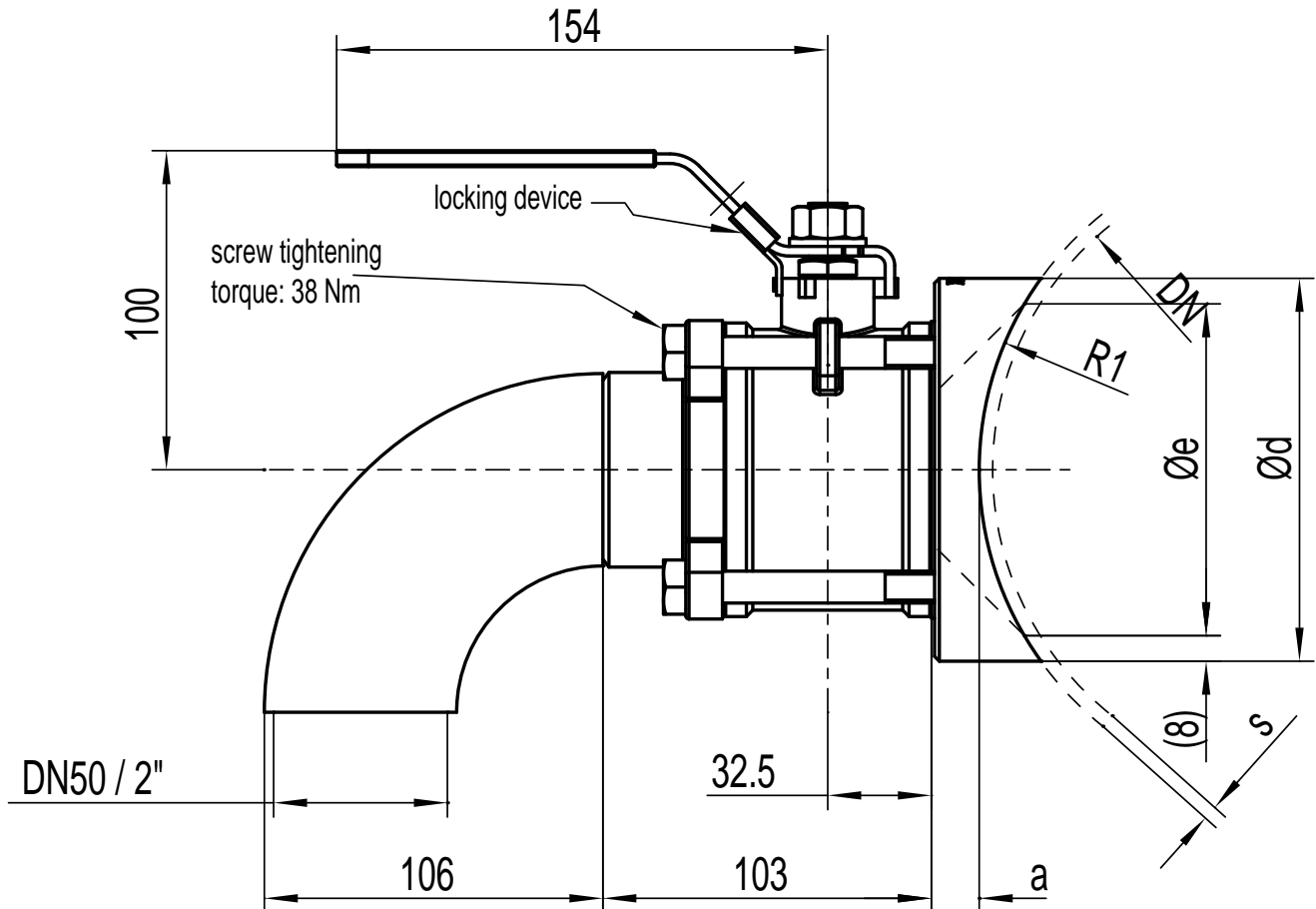
** DN pipe must be specified

s = material thickness of pipe

curved sampling valve DN 50 (2"), PN 40*

lockabe hand lever

block flange for welding and grinding



DN pipe **	Typ	R1 [mm]	s [mm]	Ø e [mm]	Ø d [mm]	a [mm]
100	PHB50/100k Hv	52	2	74	90	30
125	PHB50/125k Hv	64.5	2	99	115	30
150	PHB50/150k Hv	77	2	104	120	14
200	PHB50/200k Hv	102.5	2.5	104	120	15
250	PHB50/250k Hv	128	3	104	120	16
300	PHB50/300k Hv	153	3	104	120	17
350	PHB50/350k Hv	178	3	104	120	18
400	PHB50/400k Hv	203	3	104	120	18
450 – 1200	PHB50/450–1200k Hv	300	4	104	120	18

* welding in pipeline must comply with PN 40

** DN pipe must be specified

s = material thickness of pipe

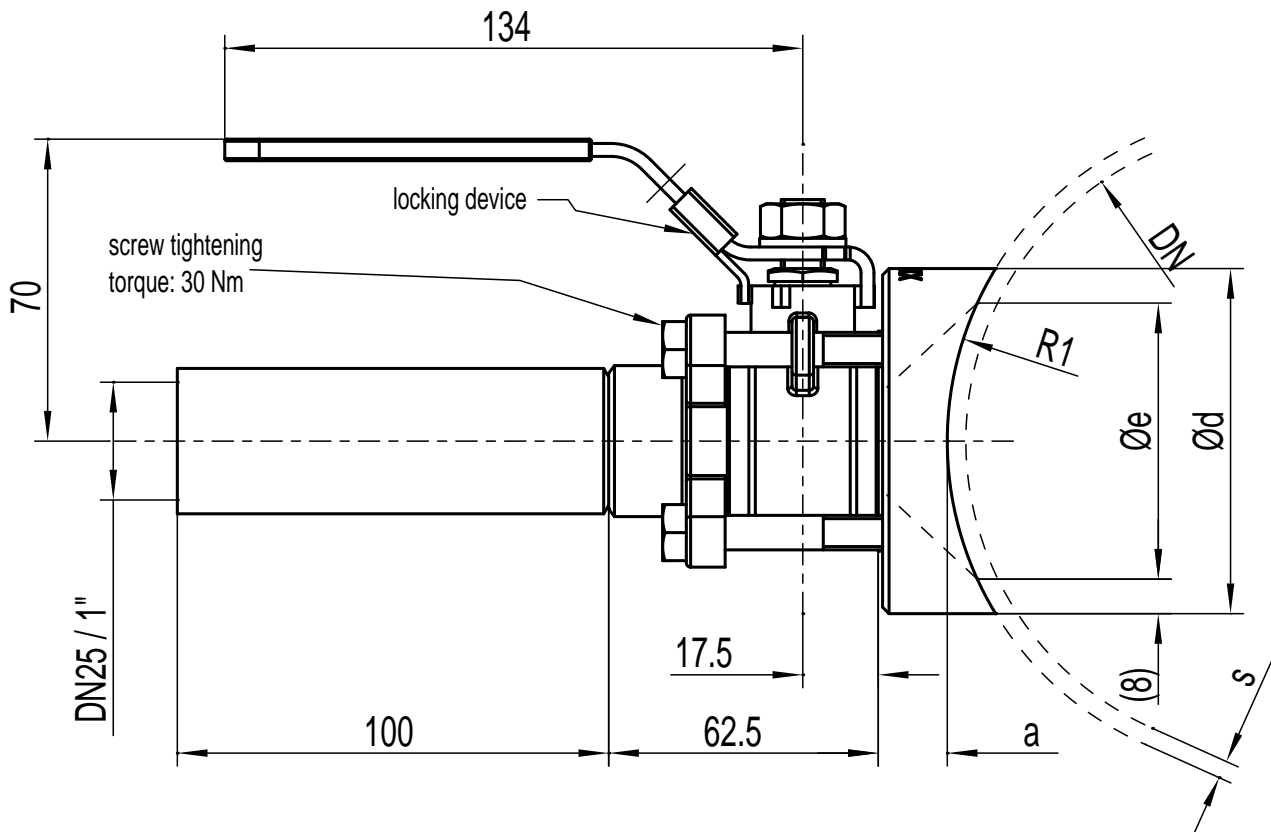
Application:

Wherever no projecting edges or hollow spaces are allowed in pipes.

e.g. paper production:

- flow box
- accepted stock line

straight sampling valve DN 25 (1"), PN 40*
 lockable hand lever
 block flange for welding and grinding



DN pipe **	Typ	R1 [mm]	s [mm]	Ø e [mm]	Ø d [mm]	a [mm]
65	PHB25/65g Hv	34.5	2	39	55	24
80	PHB25/80g Hv	42	2	54	70	24
100	PHB25/100g Hv	52	2	64	80	14
125	PHB25/125g Hv	64.5	2	64	80	15
150	PHB25/150g Hv	77	2	64	80	16
200	PHB25/200g Hv	102.5	2.5	64	80	17
250	PHB25/250g Hv	128	3	64	80	18
300	PHB25/300g Hv	153	3	64	80	19
350	PHB25/350g Hv	178	3	64	80	20
400	PHB25/400g Hv	203	3	64	80	20
450 – 1200	PHB25/450–1200g Hv	300	4	64	80	20

Application:

Wherever no projecting edges or hollow spaces are allowed in pipes.

e.g. paper production:

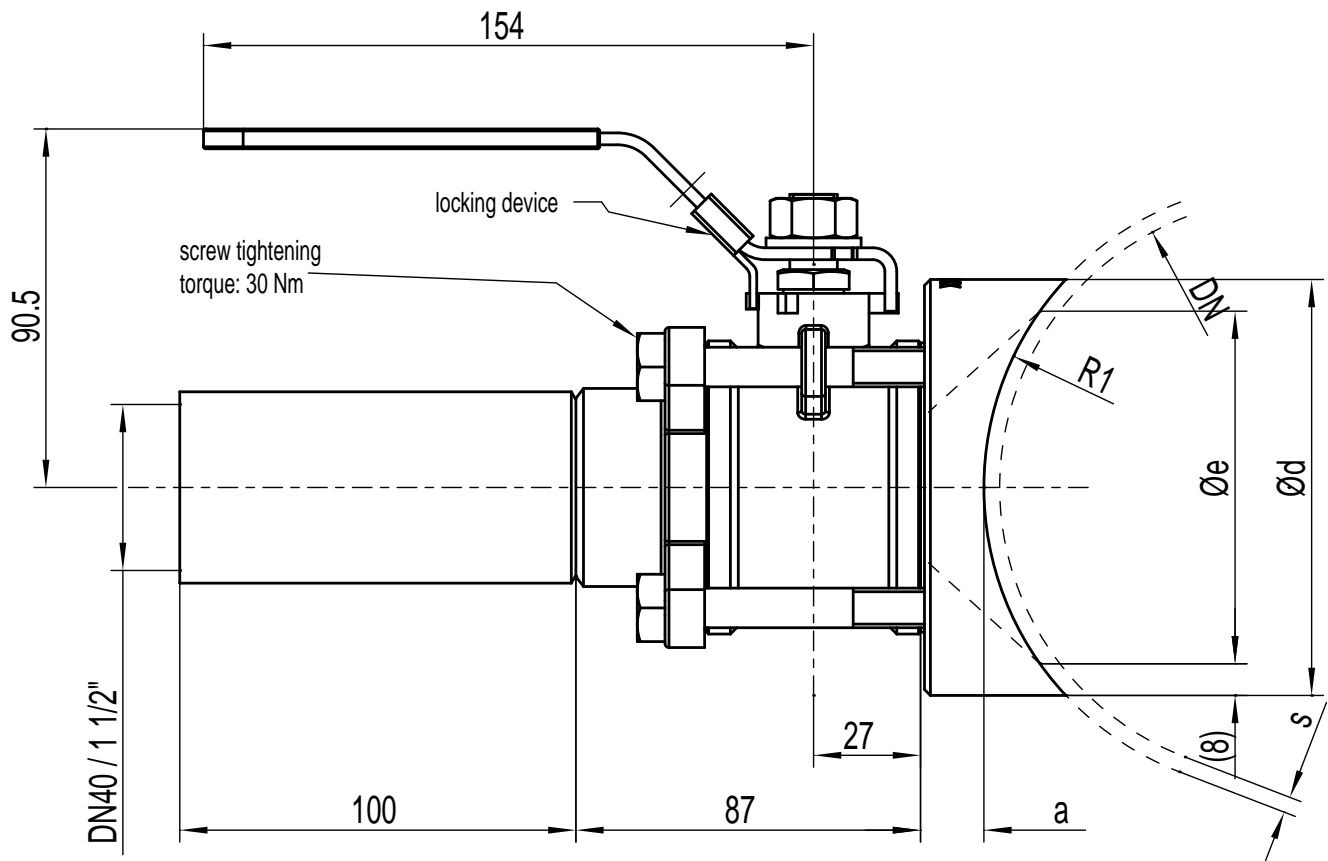
- flow box
- accepted stock line

* welding in pipeline must comply with PN 40

** DN pipe must be specified

s = material thickness of pipe

straight sampling valve DN 40 (1 1/2"), PN 40*
 lockable hand lever
 block flange for welding and grinding



Application:

Wherever no projecting edges or hollow spaces are allowed in pipes.

e.g. paper production:

- flow box
- accepted stock line

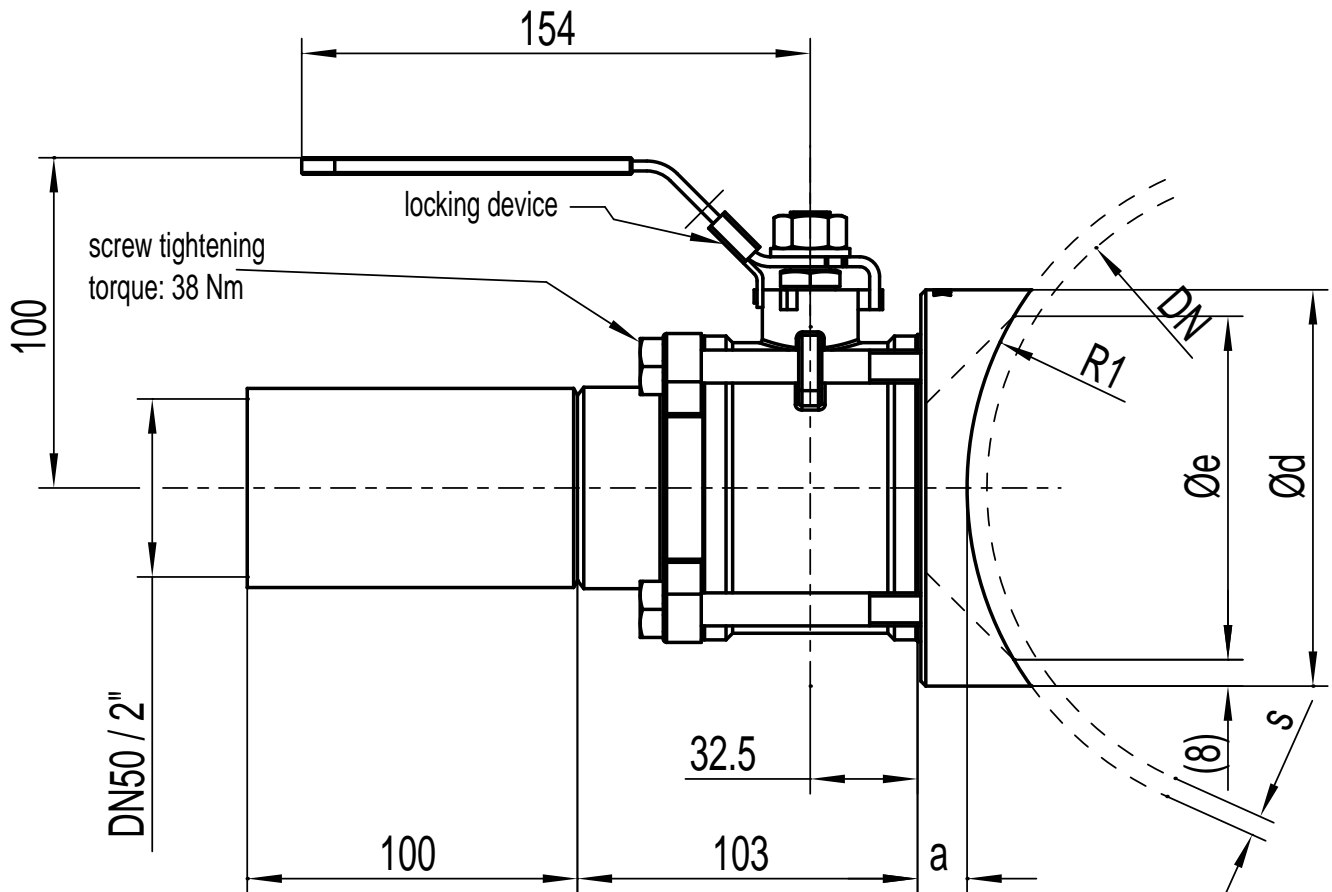
DN pipe **	Typ	R1 [mm]	s [mm]	Ø e [mm]	Ø d [mm]	a [mm]
80	PHB40/80g Hv	42	2	54	70	28
100	PHB40/100g Hv	52	2	74	90	28
125	PHB40/125g Hv	64.5	2	89	105	15
150	PHB40/150g Hv	77	2	89	105	16
200	PHB40/200g Hv	102.5	2.5	89	105	17
250	PHB40/250g Hv	128	3	89	105	18
300	PHB40/300g Hv	153	3	89	105	19
350	PHB40/350g Hv	178	3	89	105	20
400	PHB40/400g Hv	203	3	89	105	20
450 – 1200	PHB40/450–1200g Hv	300	4	89	105	20

* welding in pipeline must comply with PN 40

** DN pipe must be specified

s = material thickness of pipe

straight sampling valve DN 50 (2"), PN 40*
 lockable hand lever,
 block flange for welding and grinding



DN pipe **	Typ	R1 [mm]	s [mm]	Ø e [mm]	Ø d [mm]	a [mm]
100	PHB50/100k Hv	52	2	74	90	30
125	PHB50/125k Hv	64.5	2	99	115	30
150	PHB50/150k Hv	77	2	104	120	14
200	PHB50/200k Hv	102.5	2.5	104	120	15
250	PHB50/250k Hv	128	3	104	120	16
300	PHB50/300k Hv	153	3	104	120	17
350	PHB50/350k Hv	178	3	104	120	18
400	PHB50/400k Hv	203	3	104	120	18
450 – 1200	PHB50/450–1200k Hv	300	4	104	120	18

* welding in pipeline must comply with PN 40

** DN pipe must be specified

s = material thickness of pipe

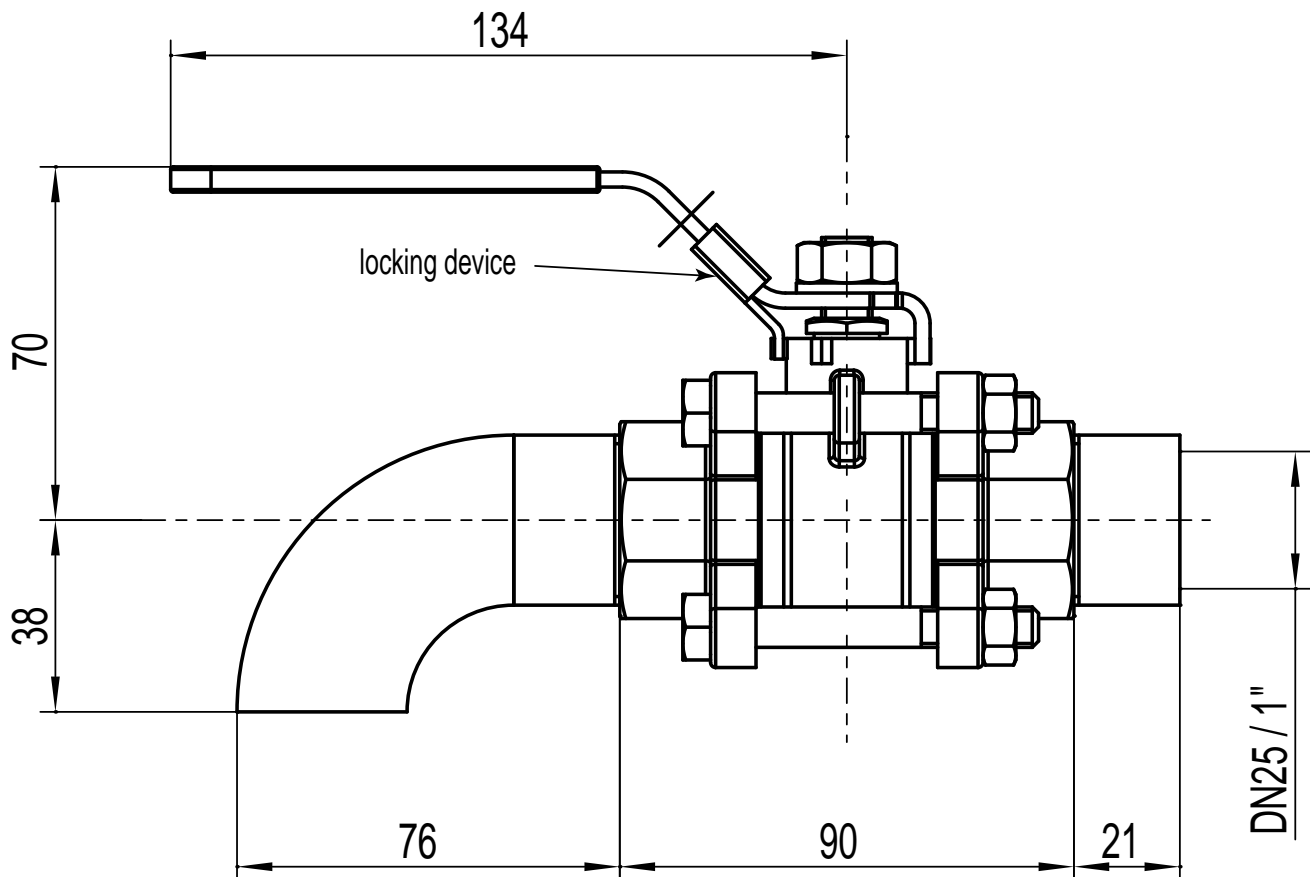
Application:

Wherever no projecting edges or hollow spaces are allowed in pipes.

e.g. paper production:

- flow box
- accepted stock line

curved sampling valve DN 25 (1"), PN 40*
lockable hand lever,
weld-on nipple



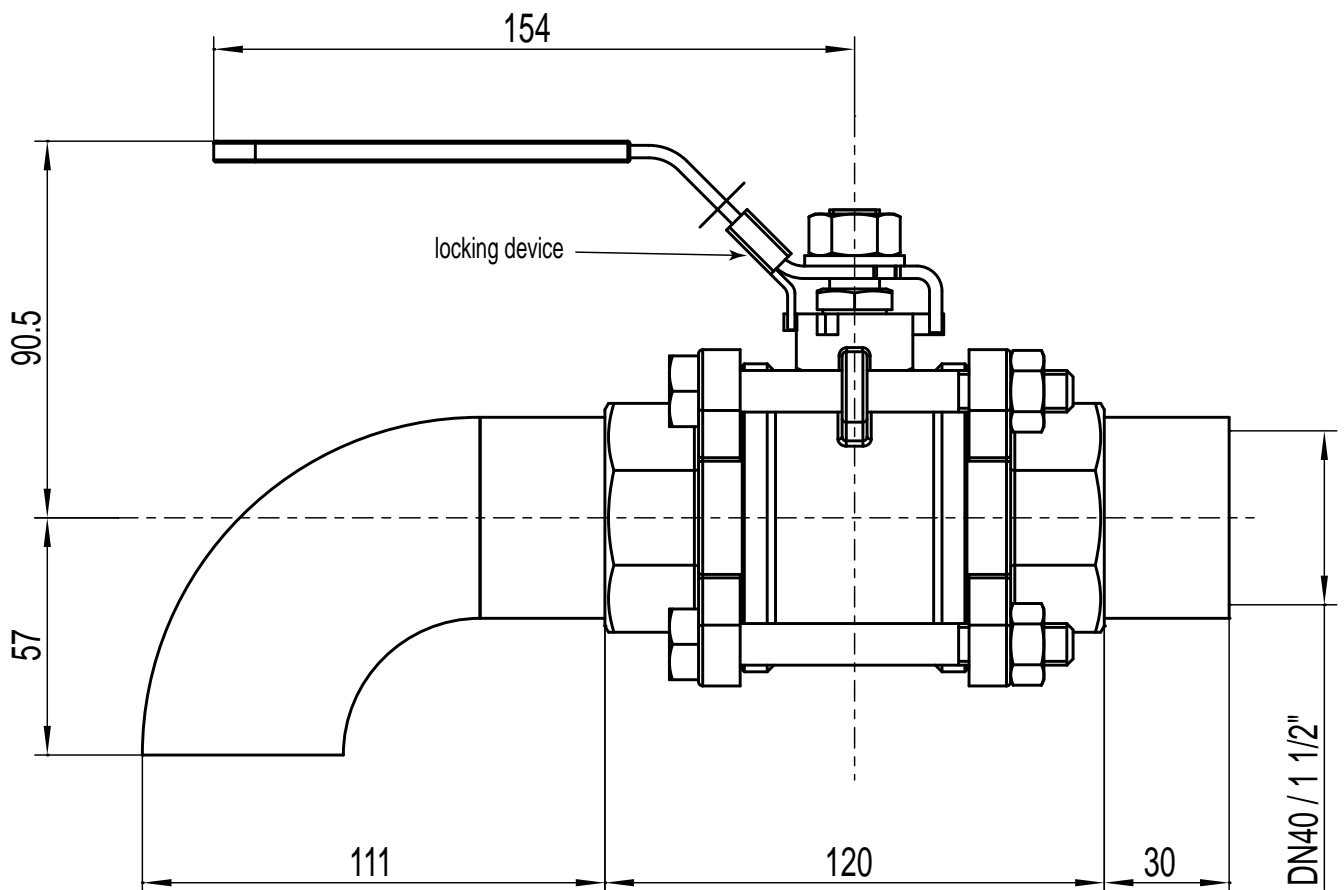
Application:

Wherever samples of media have to be taken and hollow spaces are negligible.

weight: 1.4 kg

* welding in pipeline must comply with PN 40

curved sampling valve DN 40 (1 1/2"), PN 40*
lockable hand lever,
weld-on nipple

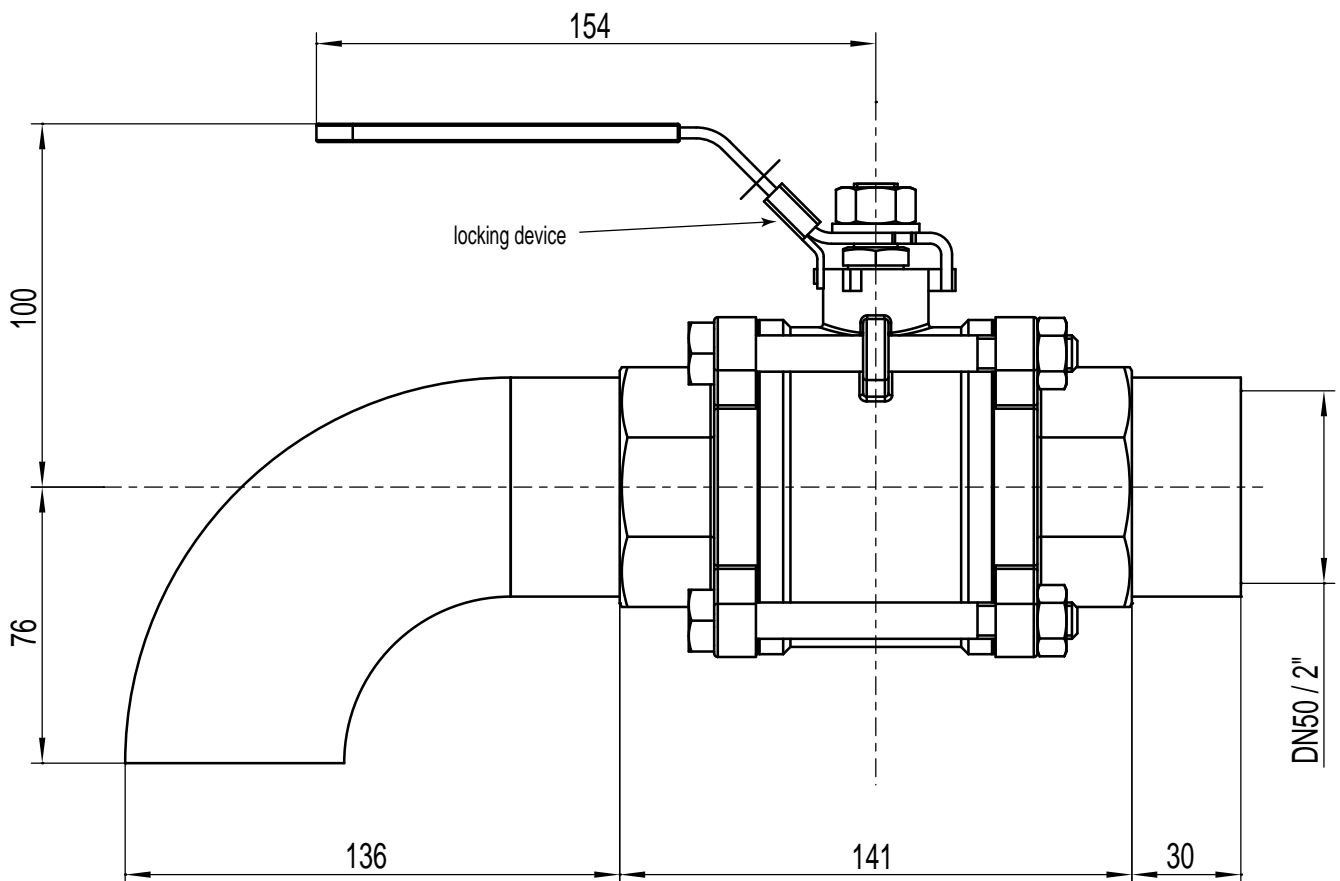


Application:

Wherever samples of media have to be taken and hollow spaces are negligible.

* welding in pipeline must comply with PN 40

curved sampling valve DN 50 (2"), PN 40*
lockable hand lever,
weld-on nipple



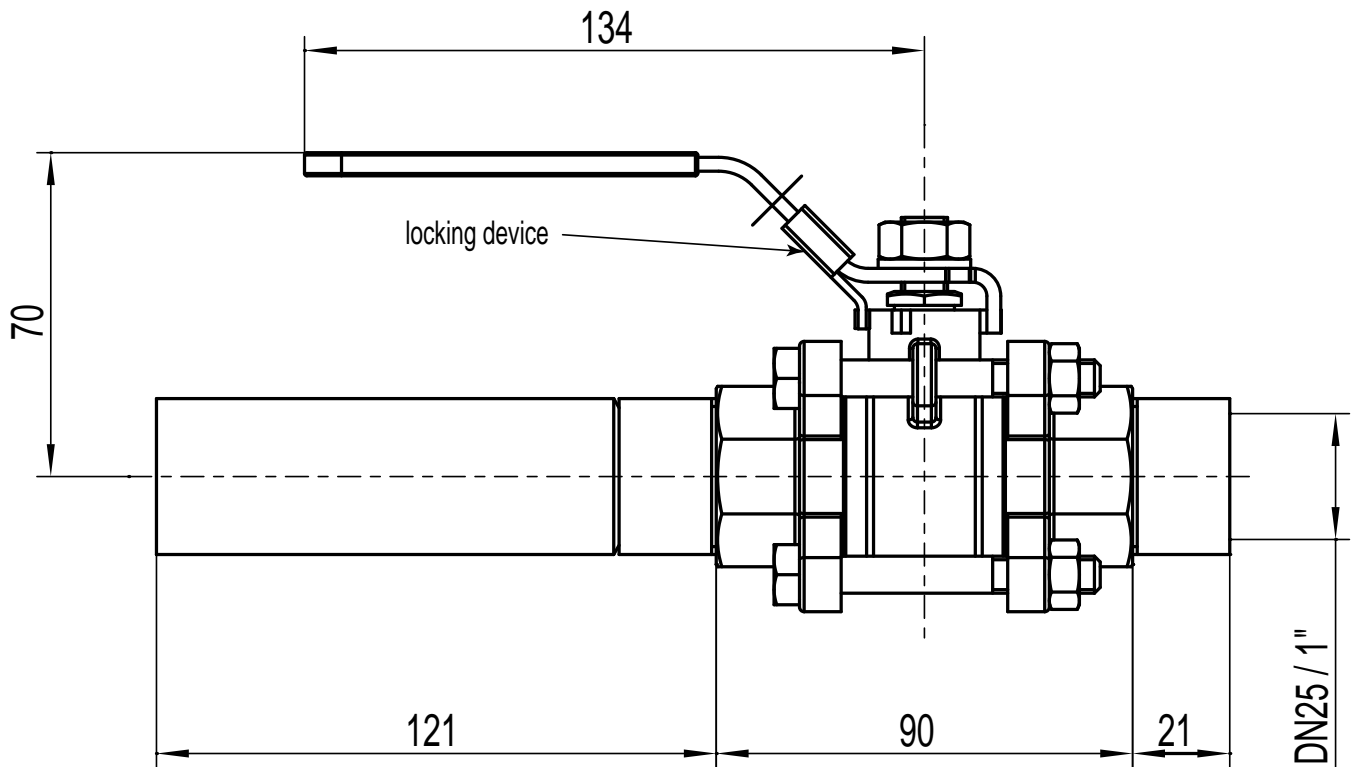
Application:

Wherever samples of media have to be taken and hollow spaces are negligible.

weight: 4.1 kg

* welding in pipeline must comply with PN 40

straight sampling valve DN 25 (1"), PN 40*
lockable hand lever,
weld-on nipple



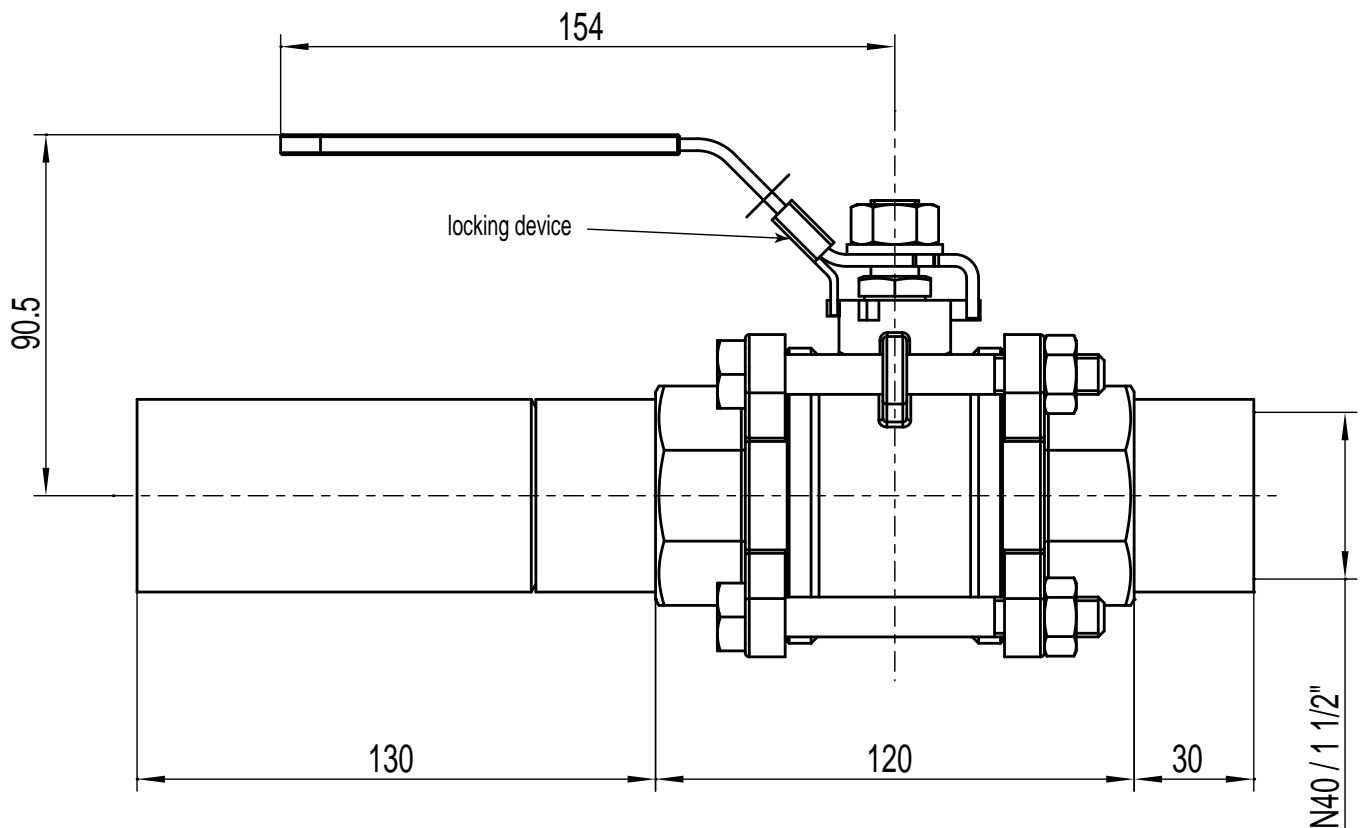
Application:

Wherever samples of media have to be taken and hollow spaces are negligible.

weight: 1.5 kg

* welding in pipeline must comply with PN 40

straight sampling valve DN 40 (1 1/2"), PN 40*
lockable hand lever,
weld-on nipple

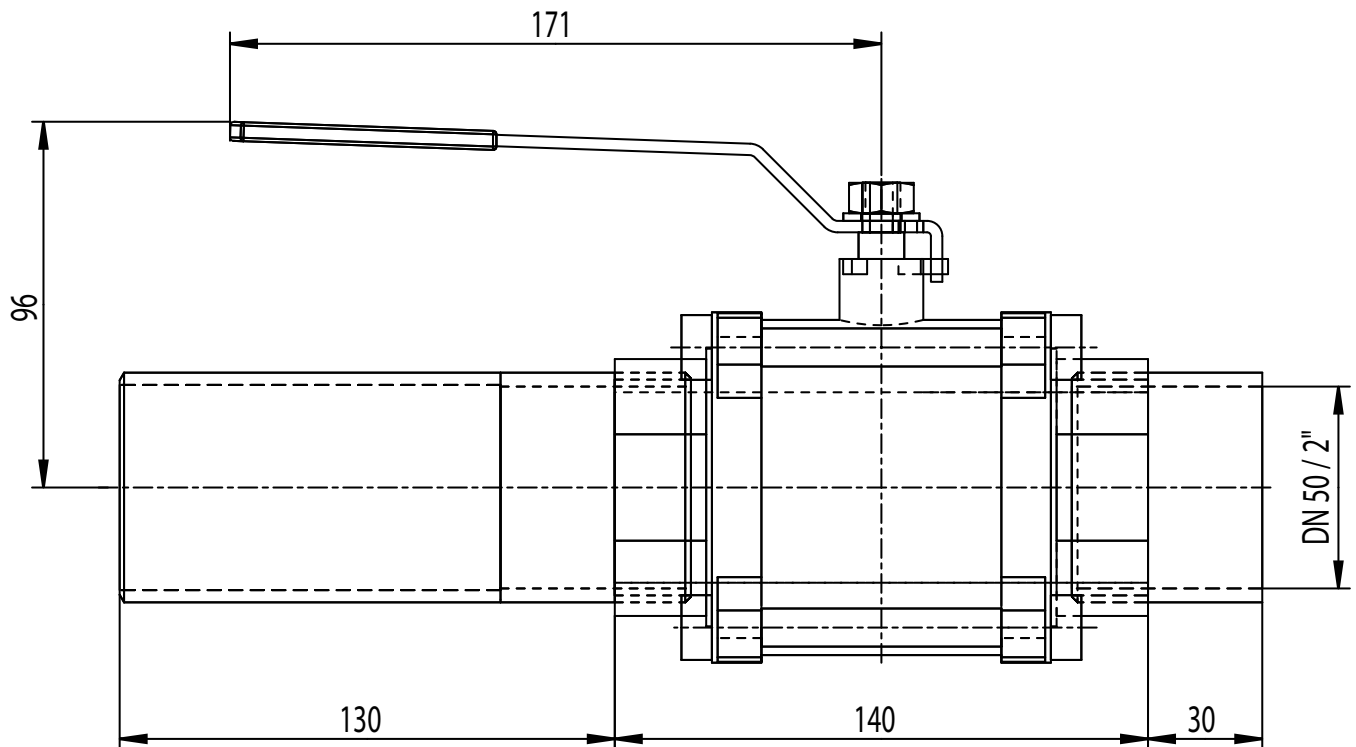


Application:

Wherever samples of media have to be taken and hollow spaces are negligible.

* welding in pipeline must comply with PN 40

straight sampling valve DN 50 (2"), PN 40*
hand lever,
weld-on nipple



Application:

Wherever samples of media have to be taken and hollow spaces are negligible.

weight: 4.2 kg

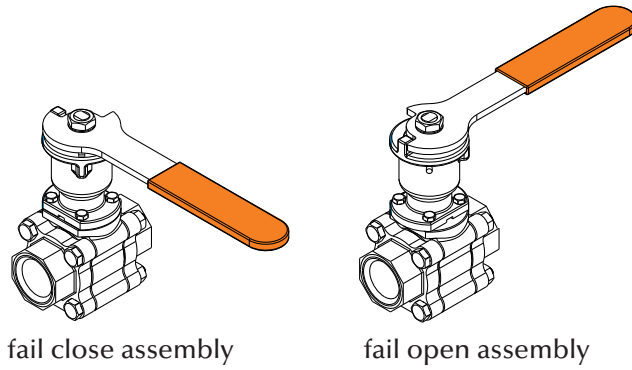
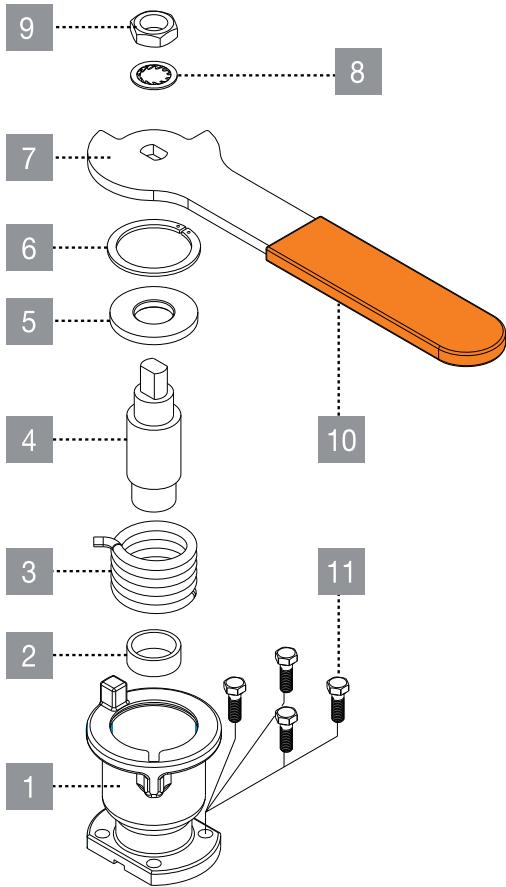
* welding in pipeline must comply with PN 40

Description

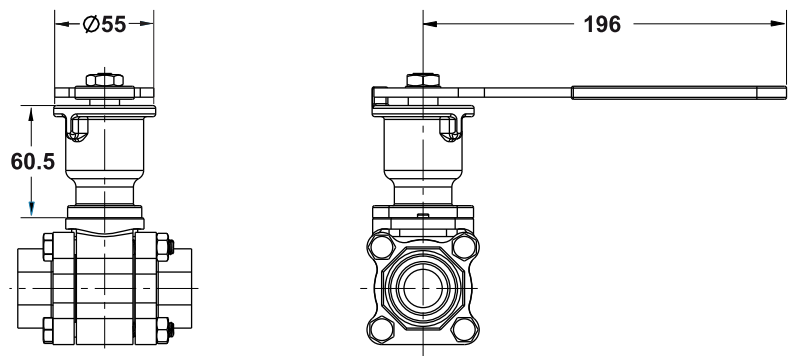
- size range:
1/2" – 1 1/4" (DN 15 – 32)
- features:
provides dependable automatic closing or opening of manual valves
- applications:
sampling, by-pass, steam letdown, draining, pressure relief
- stroke end output torque:
11 Nm (97 in-lb)
- materials:
stainless steel
- connection:
direct mounting acc. to ISO 5211
- safety features:
tamper proof spring loaded unit for direct assembly to valve
- other features:
fail to close or fail to open mountable
locking device



can easily locked with a padlock



item	description	material specifications	qty.
1	body housing	stainless steel ASTM A351 CF8M	1
2	bottom bearing	PTFE	1
3	spring	spring steel ASTM A401	1
4	stern	stainless steel 17-4 PH	1
5	top bearing	BRASS ASTM B121	1
6	locking clip	spring steel DIN 472	1
7	handle	stainless steel AISI 430	1
8	serrated washer	stainless steel	1
9	handle nut	stainless steel 316 ASTM A194	1
10	handle sleeve	VINYL PLASTISOL	1
11	housing screws	stainless steel A2-70 ISO 4014	4

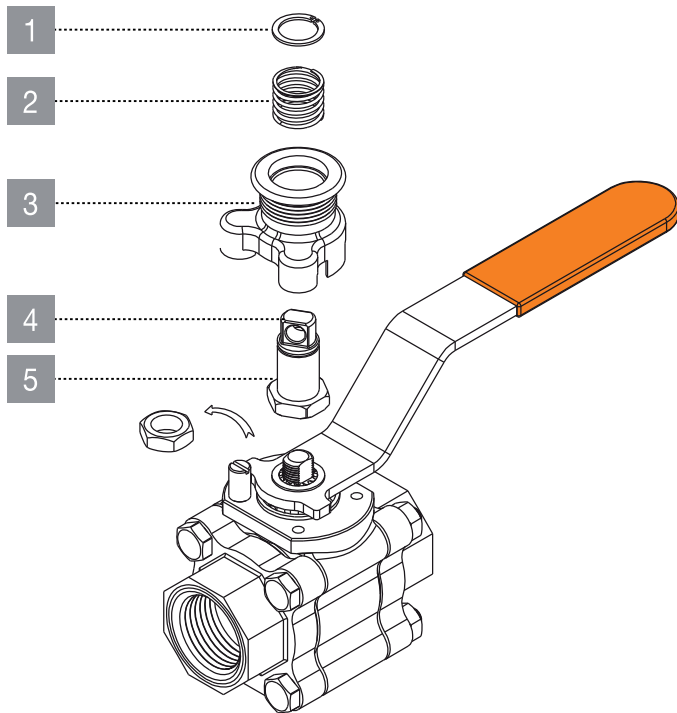


CAUTION!

While operating the spring loaded device, hold lever firmly and release gently. Slamming the unit might cause human injuries or handle deformation.

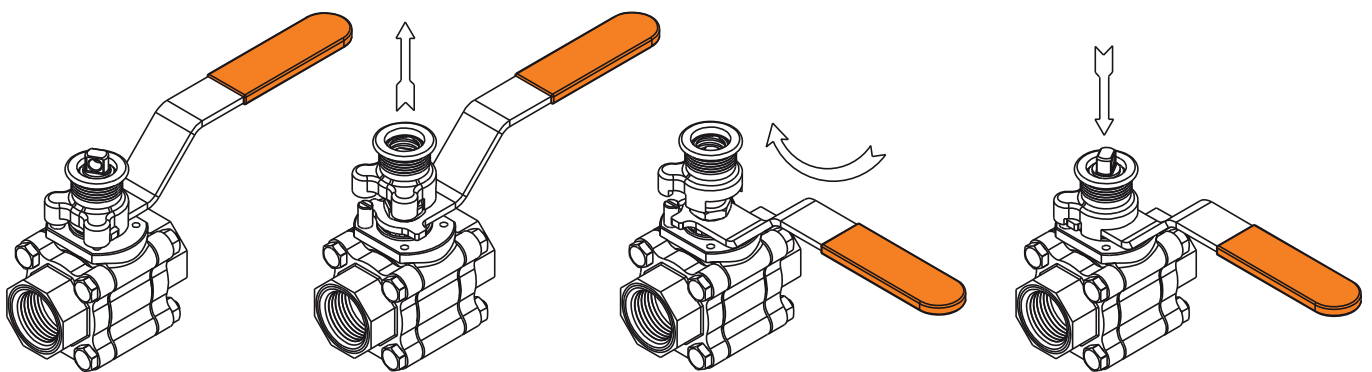
Locking device

The robust device locks the valve handleat open or close position and allow to add a pad lock (up to 6 mm) for misuse prevention. The spring-load construction ensure handle is lock in position at all valve installation orientations and under vibrating conditions. An accidentally push / pull / turn of the handle is prevented.



item	description
1	retaining ring
2	spring
3	housing
4	shaft groove
5	shaft

Locking device operation



valve locked in open position

lift locking device housing above valve stop

turn the valve handle 90° locking device housing to the close position

release the locking device housing down to lock

Germany + Switzerland

MARTIN LOHSE GmbH
Unteres Paradies 63
89522 Heidenheim
Phone: +49 7321 755-0
sales@lohse-gmbh.de
www.lohse-gmbh.de

Australia, New Zealand, Indonesia, Singapore, Malaysia

P.T. VOITH PAPER
Jl. Permata V Lot EE - 1
Kawasan Industri KIIC
Karawang 41361, INDONESIA
Phone : +62 267 419 719
Fax : +62 267 419 717

Austria (Papier- + Zellstoffindustrie, Abwasser + Kläranlagen) + CZ, SK, SLO, SRB, HR, H

Peter Rejter
Handel Mazzetti-Str. 85
3100 St. Pölten
Phone: +43 2742 77366
Fax: +43 2742 77366
office@industriearmaturen.at

Austria

Klinger Gebetsroither GmbH & Co KG

Am Kanal 8-10
2352 Gumpoldskirchen
Phone: +43 2252 60 71 00 3029
Fax: +43 2252 60 71 00 3010
gerhard.praxmarer@gebetsroither.at
www.gebetsroither.at

Belgium

Hanwel Belgium N.V.
Winninglaan 15
9140 Temse
Phone: +32 3 7110353
Fax: + 32 3 7110579
info@hanwel.be
www.hanwel.be

Chile

INTERTECH
Prat 116, Of 31
Curicó, Chile
phone +56.075.322033
www.inter-tech.cl
n.flores@inter-tech.cl

People's Rep. Of China

Shanghai Fier Mechanical Co. LTD
Room B4, 15/F HuaFu Bldg.
No. 585 LongHua xi Rd.
ShangHai, China 200232
Phone: +86 21 54591038
Fax: +86 21 54240616
MP: 13611665381
shfier@163.com
www.fier.com.cn

Denmark

Uni-Valve A/S
Sydvestvej 138 – 140
2600 Glostrup
Phone: +45 43 438200
Fax: +45 43 437475
mail@uni-valve.com
www.uni-valve.com

Finland

KLINGER Finland Oy
Tinankuja 3
02430 Masala
Phone: +358 10 4001011
info@klinger.fi
www.klinger.fi

France, MA, TN, DZ

T.N.P.
30 Boussegré
58140 Lormes
Phone: +33 1 559711-11
Fax: +33 1 48835207
contact@tnp.fr
www.tnp.fr

Great Britain

Voith Turbo Ltd.
6 Beddington Farm Road
Croydon, Surrey CRO, 4XB
Phone: +44 208 6673013
Fax: +44 208 6670403
matthew.healy@voith.com

Greece

Niko Mikopoulos, BSc.
Metron Str. 28
17123 Nea Smyrni-Athens
Phone: +30 6 98 305 10 70
n.mikopoulos@nm-bc.com

India

Antrieb Technik Private Limited
59 (old 359) Sidco Industrial Estate
Ambattur
Chennai-600 098
Tamilnadu / INDIA
Phone: +91 44 262-58303
Fax: +91 44 2819-3718
antrieb.technik@gmail.com

Israel

P.B.A Wiesner Agencies Ltd.
P. O. Box 4622
Petach-Tikva 49277
Phone: +972 3 9052111
Fax: +972 3 9052110
ofra@pba.co.il

Italy

Techno Paper S.R.L.
Viale Certosa 269
20151 Milano (MI)
Phone: +39 02 78627750
Fax: +39 02 45471638
info@techno-paper.com
www.techno-paper.com

Japan

Voith IHI Paper Technology Co.Ltd.
River City M-SQUARE 7F
2-1-6 Tsukuda, Chuo-ku
1040051 Tokyo
Phone: +81 3 6221 3108
Fax: +81 3 6221 3126

Korea

C.S-Automation Co., Ltd. (Customer Satisfaction Automation)
#804 Sejung Technovalley
279-5 Songjeong-Dong
Heungdeok-Gu
Cheongju-Si
South Korea. 361-290
Phone: +82 43 276 1332
Fax: +82 43 278 1332
changseol@korea.com

Netherlands

Hanwel B. V.
Jan Tinbergenstraat 209
7559 SP Hengelo
The Netherlands
Phone: +31 74 2650000
Fax: +31 74 2650001
verkoop@hanwel.com
www.hanwel.com

Norway

KSB Norge AS
Holtbråtveien 69
1449 Drøbak
Phone: +47 917 19995
firmapost@ksb.com
www.ksb.com/en-no

Philippines

R. Dan and Co., Inc.
Lot 6-9 Block 5 Greenway Business
Park
Bulihan, Silang,
Cavite Philippines 4118
Phone: +63 960 690 0244
ester.poe@robertdan.com.ph
www.robertdan.com.ph

Poland

Waldemar Kulicki
ul. Heweliusza 37/4
87-148 Papowo Toruńskie
Phone: +48 509 46 64 25
waldemar-kulicki@wp.pl
www.wkulicki.eu

Rep. of South Africa

Voith Turbo (Pty) Ltd
P.O. Box 13171
Witfield, 1467
Gauteng, SOUTH AFRICA
Phone: +27 11 418 4000
Fax: +27 11 418 4080
info.vtza@voith.com
www.rsa.voithturbo.com

Spain, Portugal

CELPAP EQUIPOS, S.L.
C/Amposta, 14-18
08174 Sant Cugat del Vallés
(Barcelona)
Phone +34 93 415 18 75
celpap@celpap.com
www.celpap.com

Sweden

PA-Ventiler AB
Sagbäcksvägen 3B
43736 Lindome
Phone: +46 31 992500
Fax: +46 31 992503
info@paventiler.se
www.paventiler.se

Switzerland

dampfEXPERTE GmbH
Häsiweg 33
5018 Erlinsbach
Phone: +41 62 5448090
roger.fehr@dampfexperte.ch
www.dampfexperte.ch

Taiwan

E-Chen Engineering Co., Ltd.
3F-3, No. 151, Sec. 4,
Hsin-Yi Road,
Taipei, Taiwan, R.O.C.
Phone: +886 22 7056185
Fax: +886 22 7045967
echen123@ms15.hinet.net

Thailand

Weston Myer Ltd.
8 Soi Seri-Thai 58
Seri-Thai Road
10510 Minburi Bangkok
Phone: +66 2 3745869
Fax: +66 2 375-1179
comm1@westonmyer.com

Turkey

Sanrep Kağıt San. ve Tic. Ltd. Şti.
Altiyol, Kuşdili Caddesi No:19/7
H.Fazlıoğlu İş Merkezi
34714 Kadıköy – İSTANBUL
Phone: +90 216 345 40 48
Fax: +90 216 330 73 12
sanrep@sanrep.com
www.sanrep.com

USA, Canada, Mexico

Voith Paper Inc.
2200 N. Roemer Rd.
Appleton, WI 54912-2237
Phone: +1 920 – 358 – 2396
Fax: +1 920 – 731 – 5126
VPAWSpareParts@voith.com