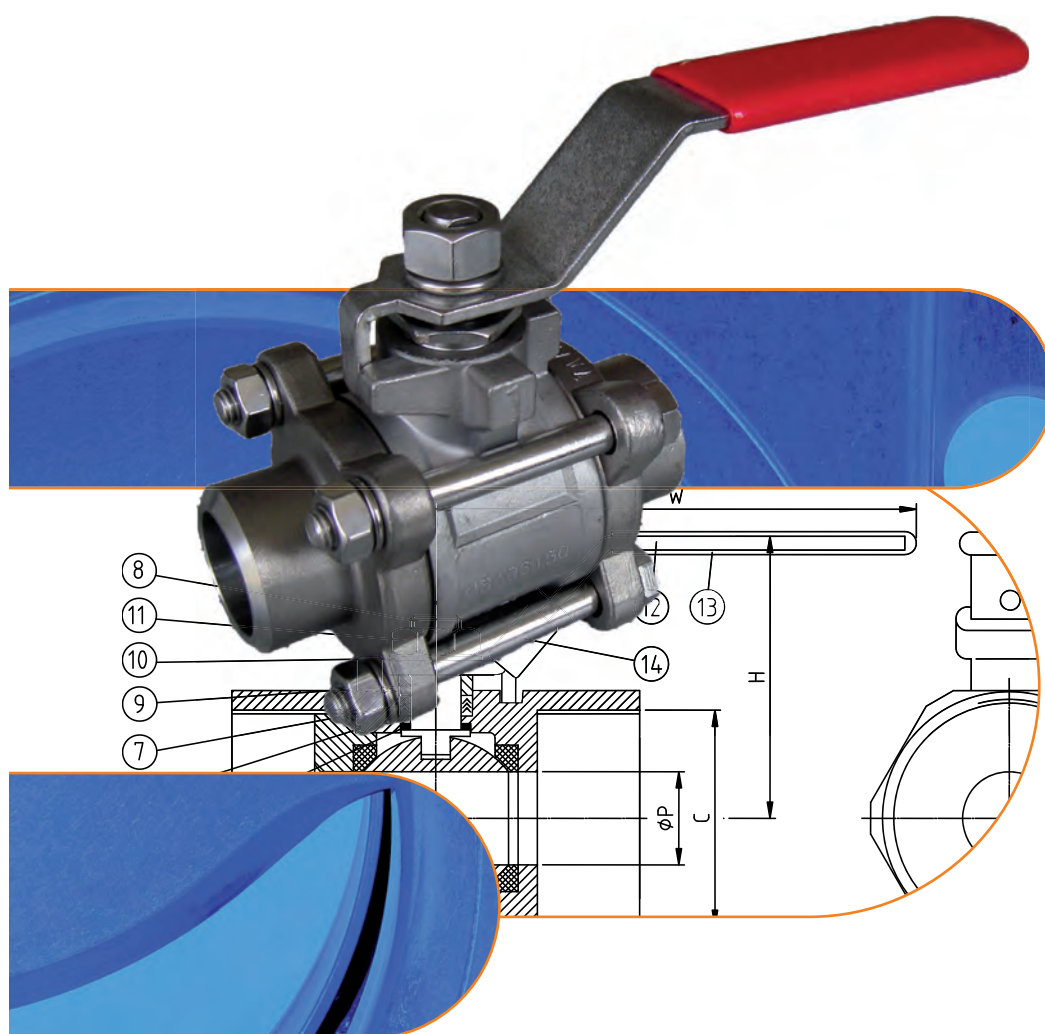


# Ball Valves

## of stainless steel



MARTIN LOHSE GmbH  
 Unteres Paradies 63 · D-89522 Heidenheim  
 phone +49 7321 755-42  
 sales@lohse-gmbh.de  
 www.lohse-gmbh.de

## 1-part ball valves

- VL-201T  
hand lever, thread end (T), reduced opening 231

## 2-part ball valves

- VL-K451T  
hand lever, thread end (T), full opening, PN 63 233
- VL-402  
hand lever, thread end (T), full opening, PN 100 235
- VL-815-PD  
pneumatic part turn actuator, flange connection, full opening 237
- VL-830-PD  
pneumatic part turn actuator, flange connection, full opening 238
- VL-816 / VL-840  
hand lever, flange connection, full opening 240
- VL-816/-840-PD  
pneumatic part turn actuator, flange connection, full opening 242
- VL-815F  
hand lever, flange connection (F), full opening 246
- VL-421T-PD / -PE  
pneumatic part turn actuator, thread end (T), full opening, DIN/ISO 5211 top flange 248

## 3-part ball valves

- VL-K551T / B  
hand lever, thread end (T) or welding end (B), optionally with locking device (Hv), full opening 250
- PA176\_H3EB-STD-Hv  
lockable hand lever, long welding ends, full opening 252
- PA176\_H3EB-ISO-Hv  
lockable hand lever, long welding ends, full opening 254
- PA176-172\_H3TEB-STD-Hv  
lockable hand lever, 1x thread end, 1x long welding end 256
- PA176-172\_H3TEB-ISO-Hv  
lockable hand lever, 1x thread end, 1x long welding end 258
- VL-521T-PD / -PE  
pneumatic part turn actuator, DIN/ISO 5211 top flange, thread end (T) 260
- VL-521B-PD / -PE  
pneumatic part turn actuator, DIN/ISO 5211 top flange, welding end (B) 262

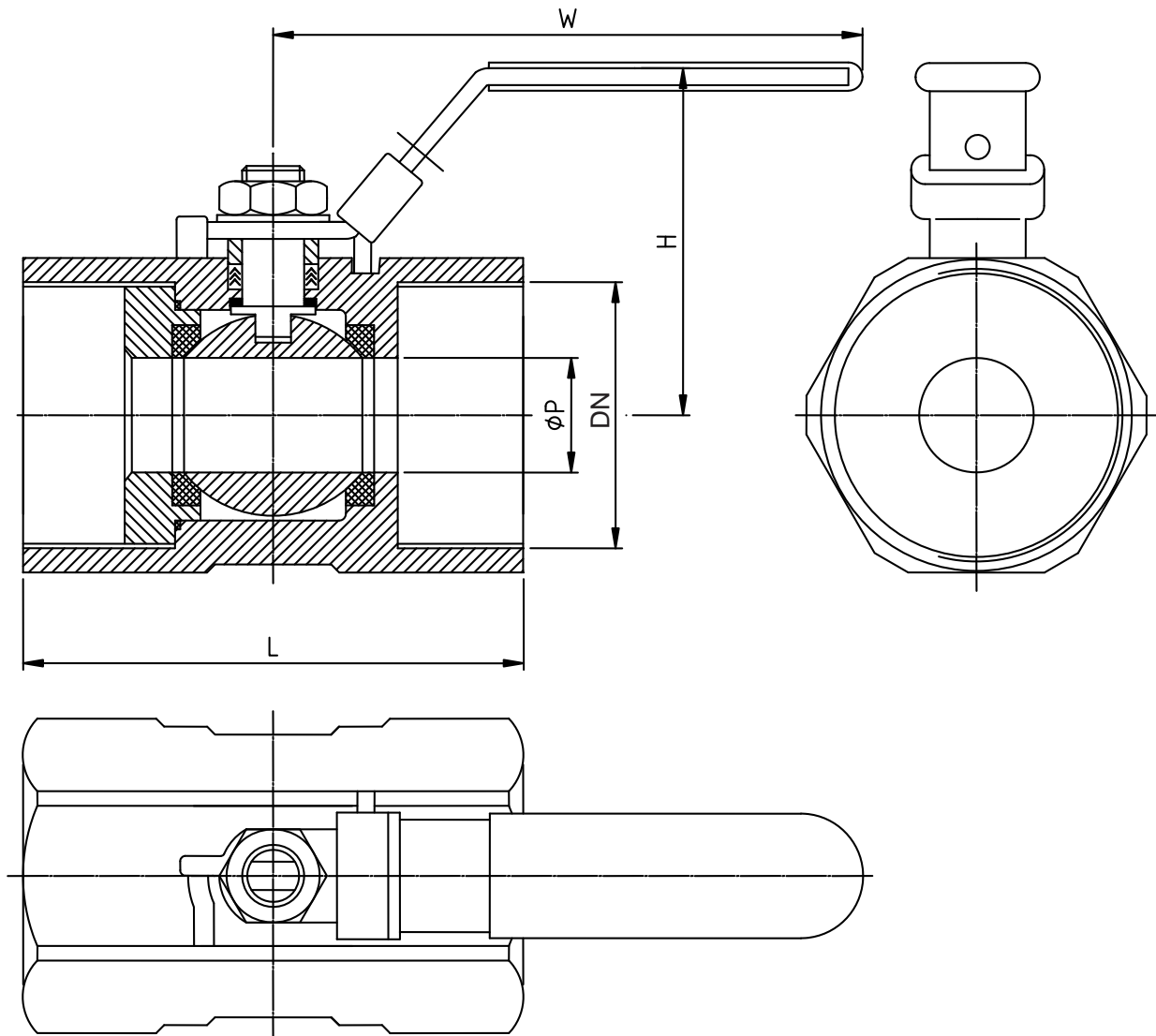
## compact flange ball valves

- VL-160F  
hand lever, full opening 264
- VL-140F  
hand lever, DIN/ISO 5211 top flange, full opening, DN 15–100 266
- VL-140F-PD/-PE  
pneumatic part turn actuator, DIN/ISO 5211 top flange, full opening, DN 15–100 267
- VL-140F  
hand lever, DIN/ISO 5211 top flange, reduced opening, DN 125–200 269
- VL-140F-PD/-PE  
pneumatic part turn actuator, DIN/ISO 5211 top flange, reduced opening, DN 125–200 270

spring return handle 273

pressure-temperature curve 276

1-part ball valve of stainless steel  
 hand lever, thread end (T), reduced opening  
 PN 63 DN 8–50

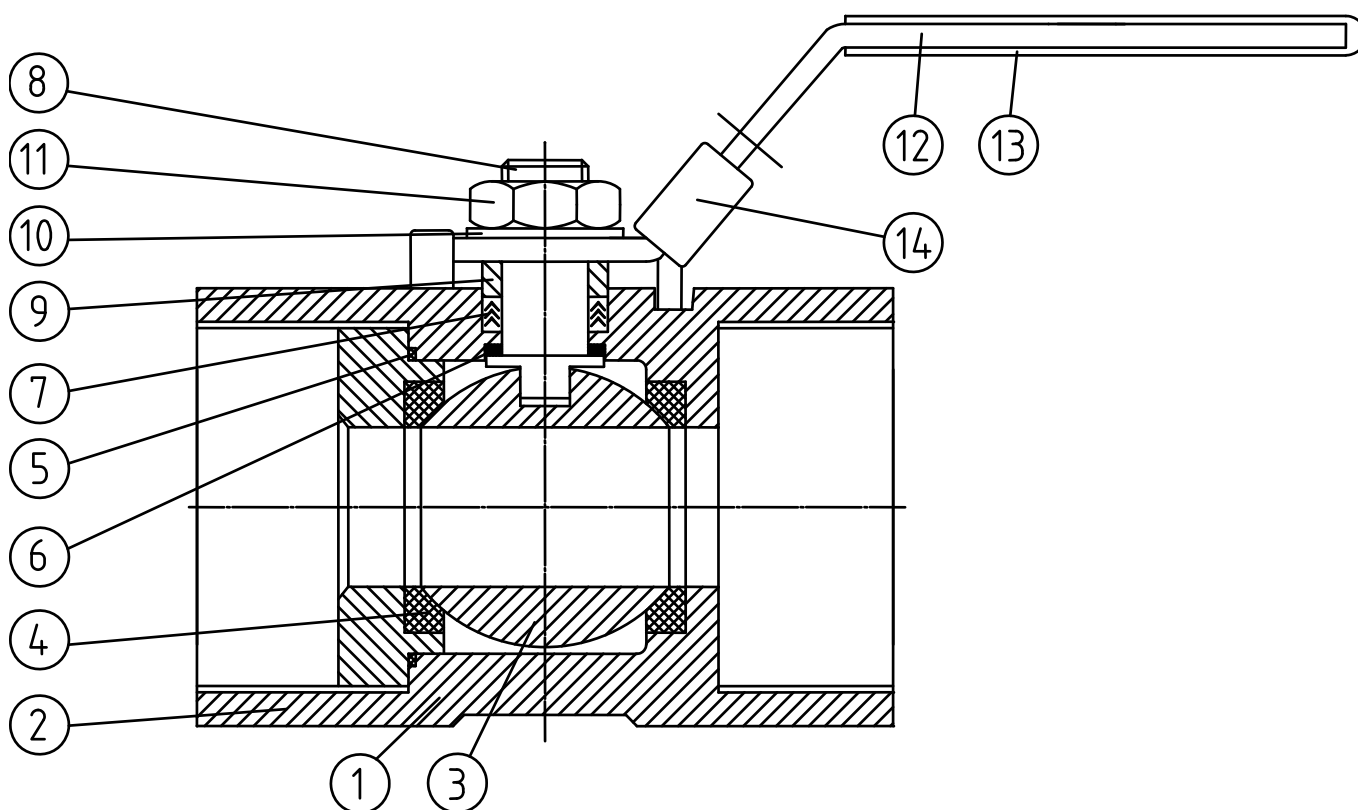


DN	Ø P	L	H	W	weight ~[kg]	
8	1/4"	5	39	32.5	70	0.065
10	3/8"	7	44	34.5	70	0.1
15	1/2"	9.2	56.5	43.5	90	0.15
20	3/4"	12.5	58	47	90	0.3
25	1"	16	71	55	110	0.4
32	1 1/4"	20	78	60.5	110	0.7
40	1 1/2"	25.4	83	74.5	140	0.8
50	2"	32	100	80.5	140	1.3

Thread according to DIN 2999, dimensions in mm.  
 Temperature range -10°C to 200°C  
 (see pressure-temperature curve).

1-part ball valve of stainless steel  
hand lever, thread end (T), reduced opening  
PN 63 DN 8–50

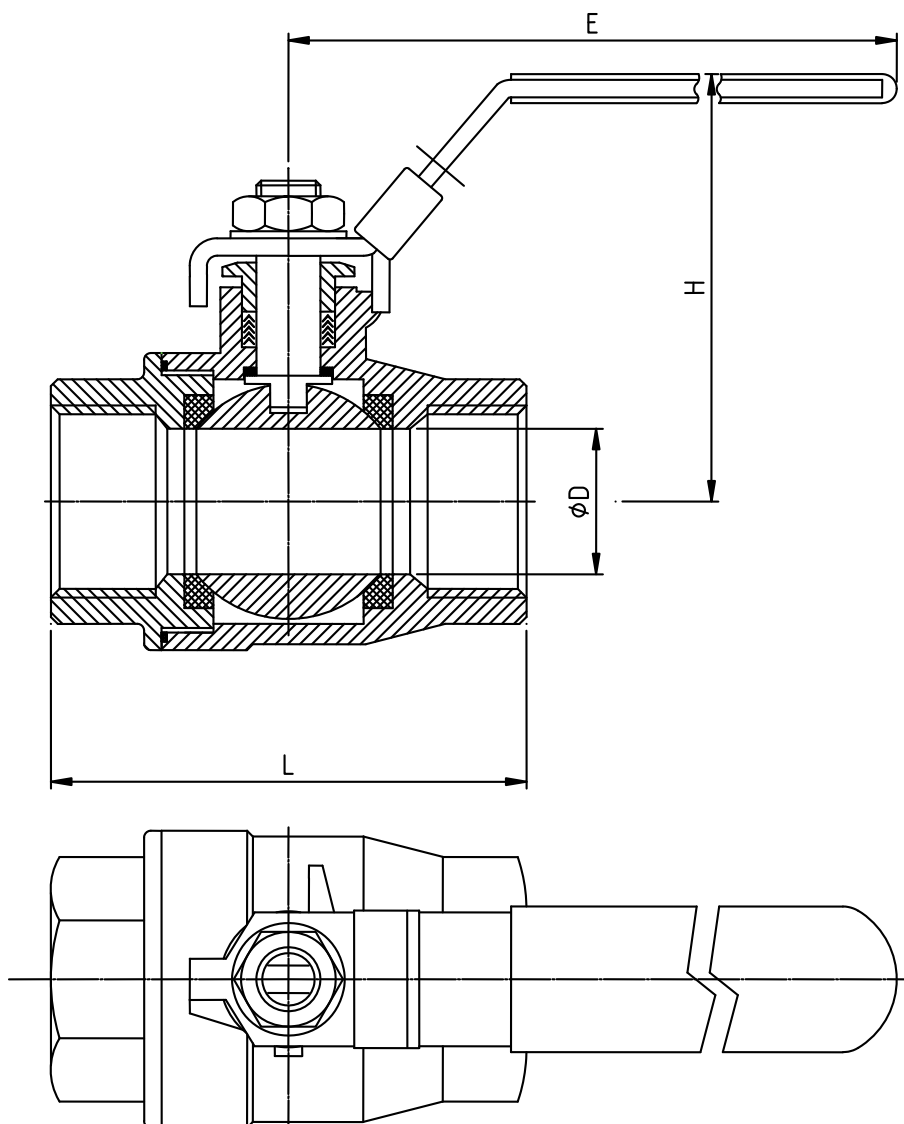
materials



pos.	description	amount	material
1	housing	1	1.4408
2	end piece	1	1.4408
3	ball	1	1.4401
4	ball seal	2	PTFE
5	housing seal	1	PTFE
6	clamping ring	1	PTFE
7	operating shaft seal	1 set	PTFE

pos.	description	amount	material
8	operating shaft	1	1.4401
9	stuffing box	1	1.4301
10	washer	1	1.4301
11	nut	1	1.4301
12	handle	1	1.4301
13	handle coat	1	plastics
14	locking device	1	1.4301 (optional)

2-part ball valve of stainless steel  
hand lever, thread end (T), full opening  
PN 63 DN 8–50 (1/4" – 2")



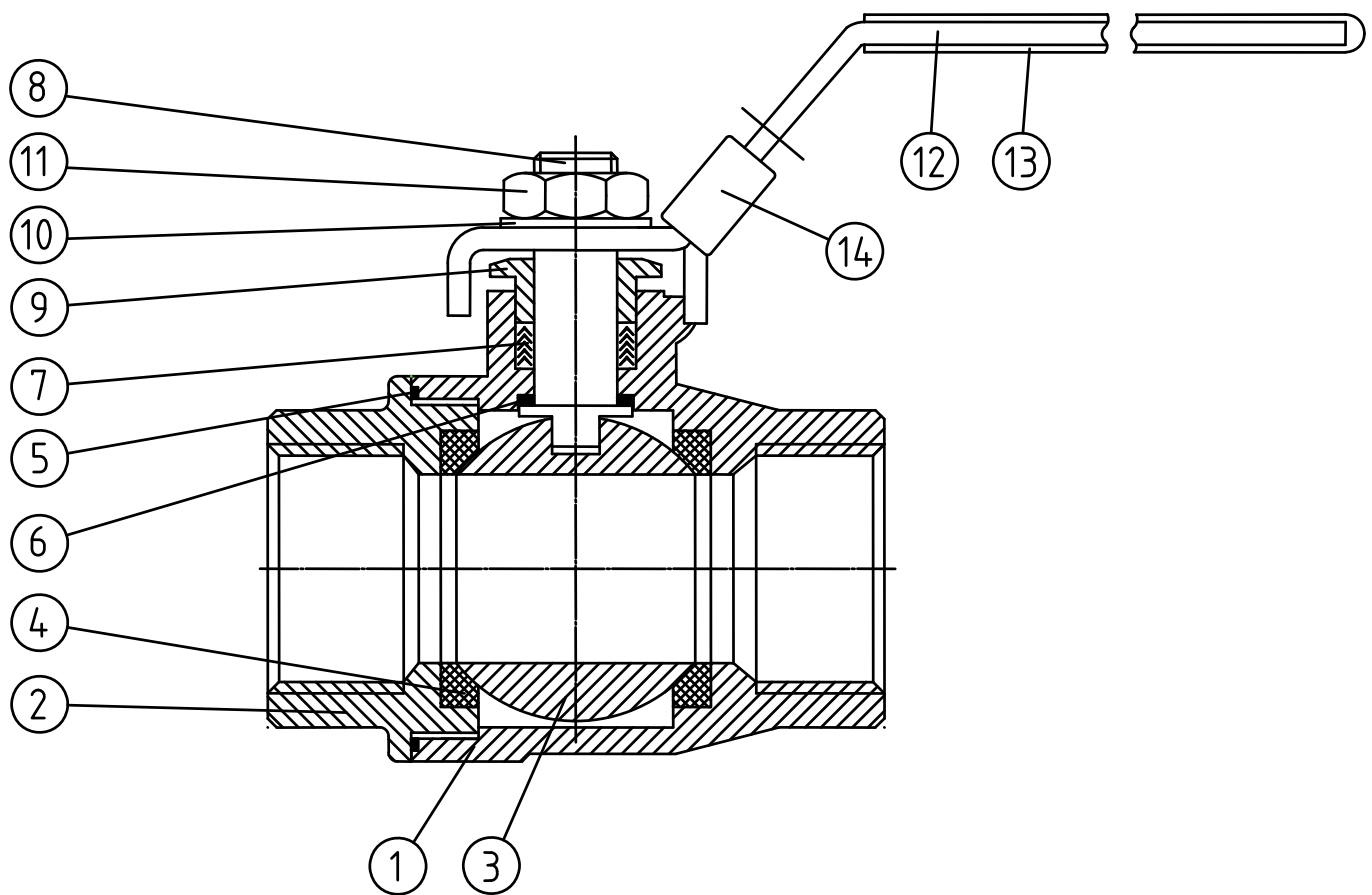
DN		Ø D	L	H	E
8	1/4"	11.5	50	57	96
10	3/8"	12.5	60	57	96
15	1/2"	15	75	57	96
20	3/4"	20	80	63	110
25	1"	25.4	90	70	113
32	1 1/4"	32	110	75	132
40	1 1/2"	38	120	93	156
50	2"	50	140	100	156

Overall length according to DIN 3202 M3, thread according to DIN 2999, dimensions in mm.

Temperature range -10°C to 200°C  
(see pressure-temperature curve).

2-part ball valve of stainless steel  
 hand lever, thread end (T), full opening  
 PN 63 DN 8–50 (1/4" – 2")

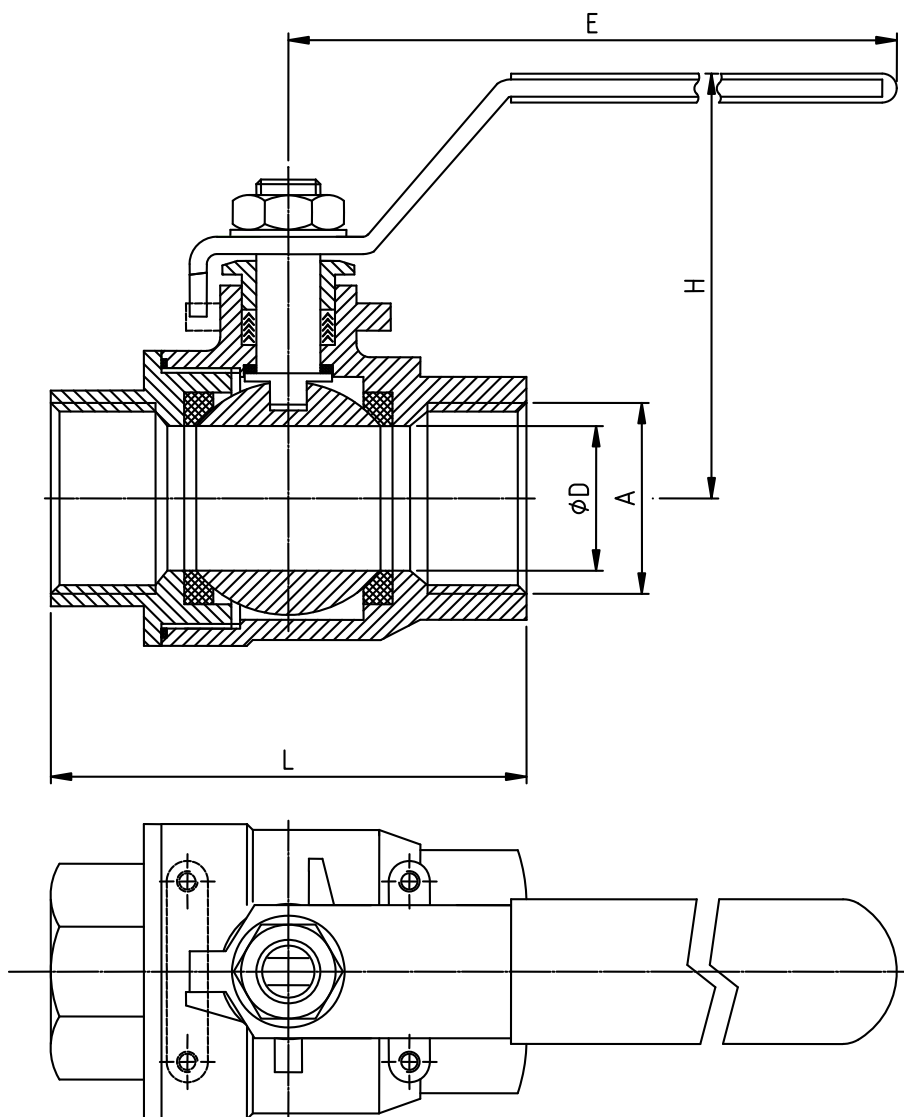
materials



pos.	description	amount	material
1	housing	1	1.4408
2	end piece	1	1.4408
3	ball	1	1.4401
4	ball seal	2	PTFE
5	housing seal	1	PTFE
6	clamping ring	1	PTFE
7	operating shaft seal	1 set	PTFE

pos.	description	amount	material
8	operating shaft	1	1.4401
9	stuffing box	1	1.4301
10	washer	1	1.4301
11	nut	1	1.4301
12	handle	1	1.4301
13	handle coat	1	plastics
14	locking device	1	1.4301 (optional)

2-part ball valve of stainless steel  
hand lever, thread end (T), full opening  
PN 100 DN 8–50 (1/4" – 2")



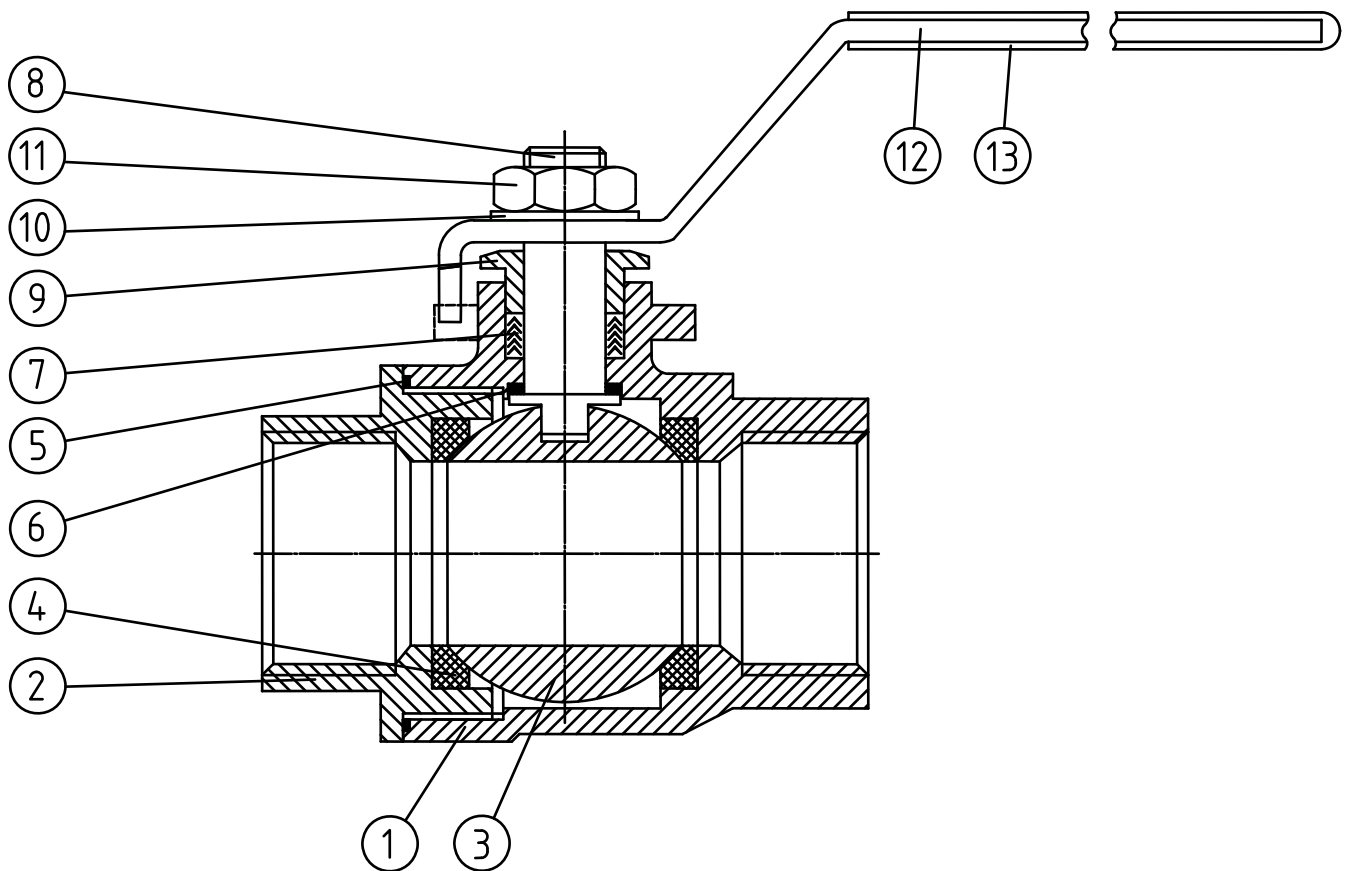
DN	Ø D	L	H	E	weight ~[kg]	
8	1/4"	11.6	55	50	96	0.25
10	3/8"	12.7	60	50	96	0.25
15	1/2"	15	75	53	96	0.4
20	3/4"	20	80	64	125	0.5
25	1"	25	90	66	125	0.9
32	1 1/4"	32	110	79	170	1.6
40	1 1/2"	38	120	83	170	2.3
50	2"	50	140	94	190	3.6

Overall length according to DIN 3202 M3, thread according to DIN 2999, dimensions in mm.

Temperature range -10°C to 200°C  
(see pressure-temperature curve).

2-part ball valve of stainless steel  
 hand lever, thread end (T), full opening  
 PN 100 DN 8–50 (1/4" – 2")

materials

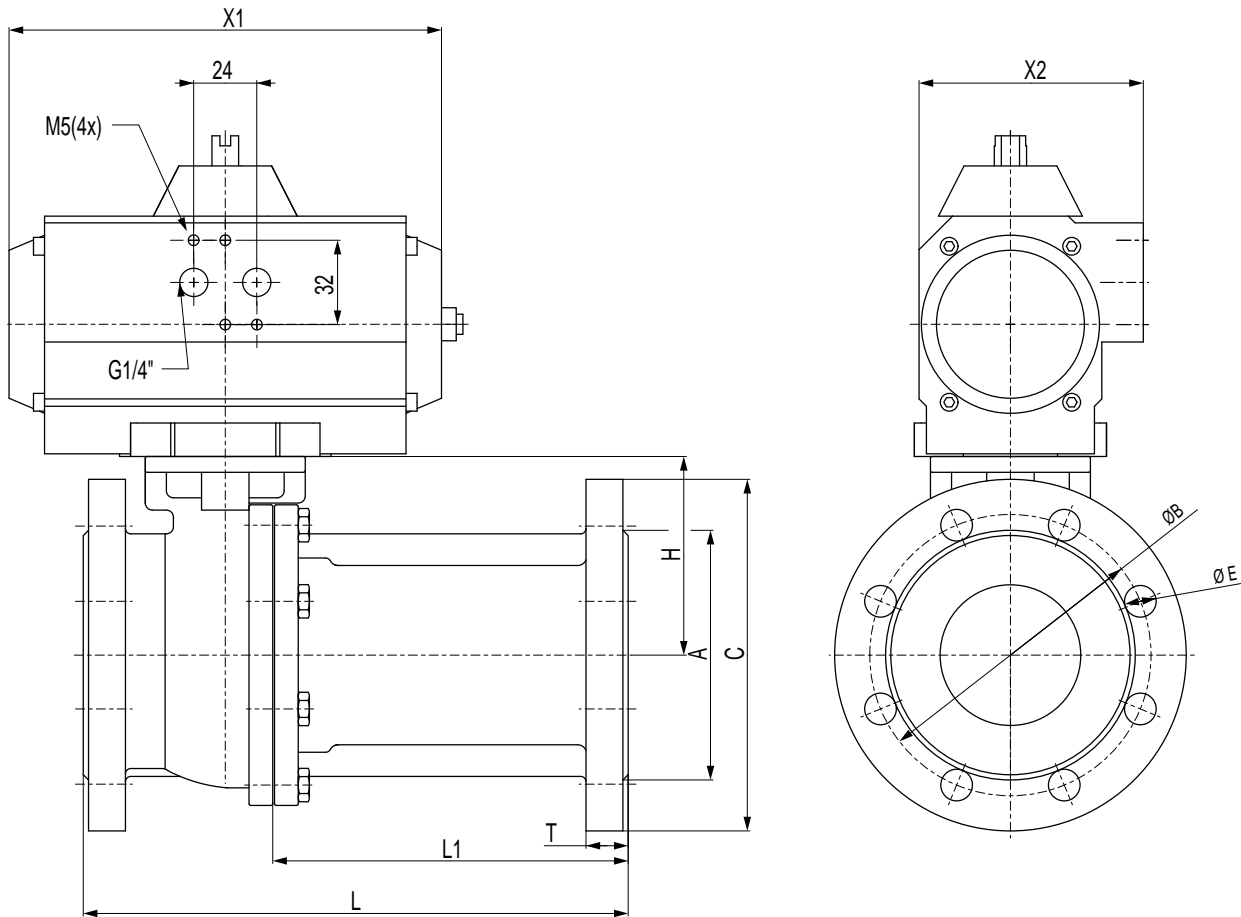


pos.	description	amount	material
1	housing	1	1.4408
2	end piece	1	1.4408
3	ball	1	1.4401
4	ball seal	2	PTFE
5	housing seal	1	PTFE
6	clamping ring	1	PTFE
7	operating shaft seal	1 set	PTFE

pos.	description	amount	material
8	operating shaft	1	1.4401
9	stuffing box	1	1.4301
10	washer	1	1.4301
11	nut	1	1.4301
12	handle	1	1.4301
13	handle coat	1	plastics
14	locking device	1	1.4301 (optional)



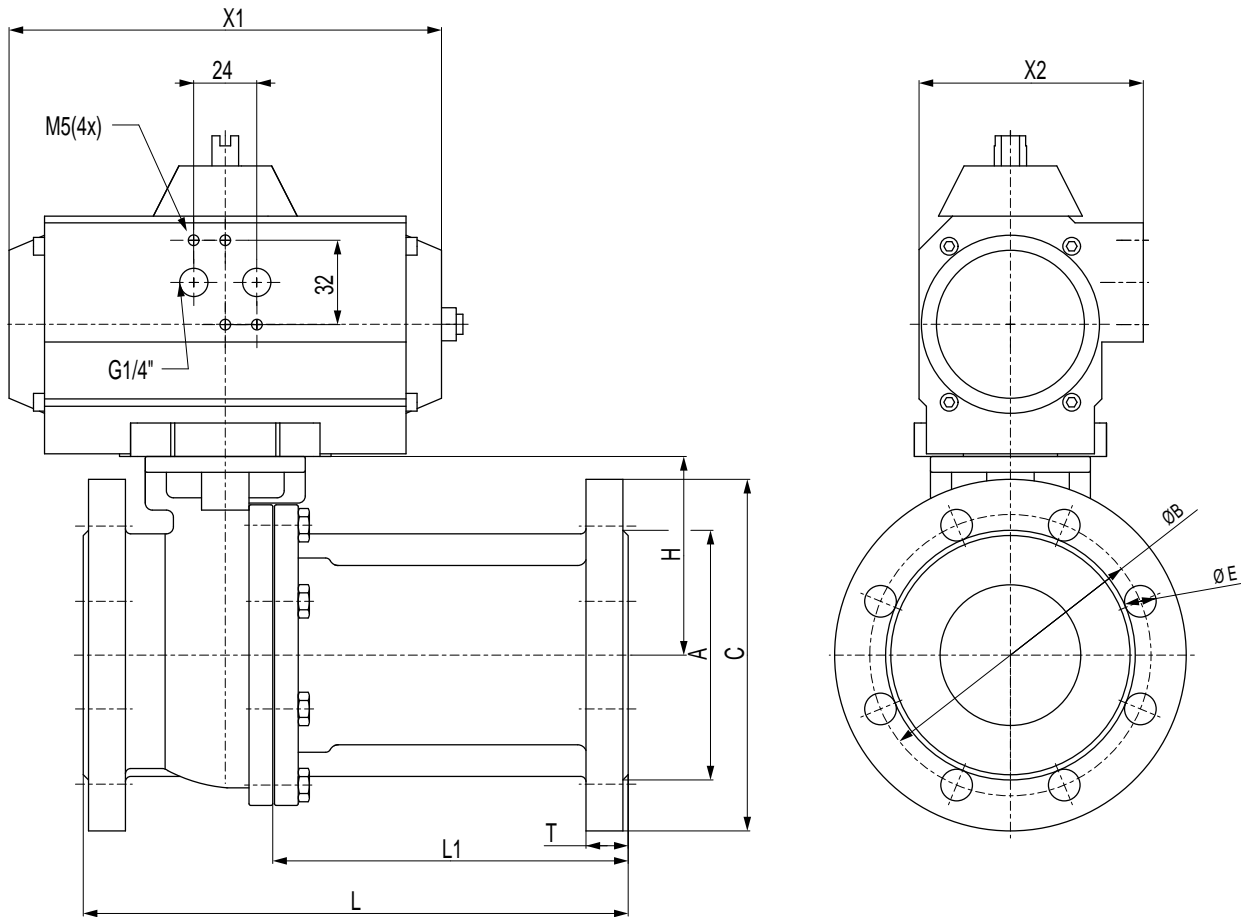
2-part flange ball valve of stainless steel  
 full opening, DIN/ISO 5211 top flange, square operating shaft and pneumatic  
 double-acting part turn actuator  
 ANSI Class 150 DN 1/2" – DN4"



DN	A	B	C	E	H	L	L1	T	X1	X2	rotating drive	
15	1/2"	35	60.5	89	16	50	108	41.5	11.1	119	67	UT 05
20	3/4"	43	70	98	16	53.5	117	48.5	12.7	165	85	UT 15
25	1"	51	79.5	108	16	58.5	127	54	14.3	165	85	UT 15
32	1 1/4"	64	89	117	16	71	140	67	15.9	165	85	UT 15
40	1 1/2"	73	98.5	127	16	76	165	84	17.5	197	85	UT 17
50	2"	92	120.5	152	19	83.5	178	90	19.1	177	96	UT 20
65	2 1/2"	105	139.5	178	19	95	190.5	92.5	22.3	230	113	UT 30
80	3"	127	152.5	190	19	113	203	94.2	23.9	246	138	UT 35
100	4"	157	190.5	229	19	131	229	114.5	23.9	246	138	UT 35

Dimensions in mm. With integrated mounting pad acc. to DIN/ISO 5211 for direct actuator mounting.  
 Temperature range -10°C to 200°C (see pressure-temperature curve).

2-part flange ball valve of stainless steel  
 full opening, DIN/ISO 5211 top flange, square operating shaft and pneumatic  
 double-acting part turn actuator  
 ANSI Class 300 DN 1/2" – DN4"

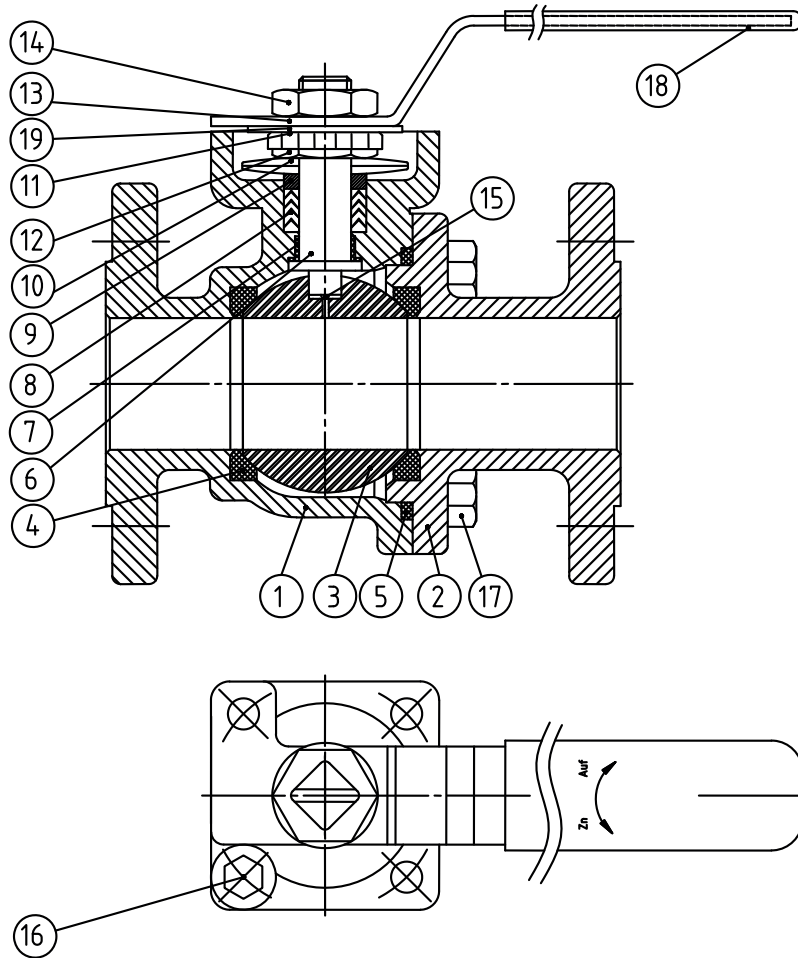


DN	A	B	C	E	H	L	L1	T	X1	X2	rotating drive	
15	1/2"	35	66.5	95	16	–	140	73.5	14.3	119	67	UT 05
20	3/4"	43	82.5	117	19	58.7	152	83.5	15.9	165	85	UT 15
25	1"	51	89	124	19	62	165	92	17.5	165	85	UT 15
32	1 1/4"	64	98.5	133	19	–	178	105	19.1	165	85	UT 15
40	1 1/2"	73	114.5	156	22	78	190	109	20.7	197	85	UT 17
50	2"	92	127	165	19	–	216	128	22.3	177	96	UT 20
65	2 1/2"	105	149	190	22	95.5	241	143	25.4	230	113	UT 30
80	3"	127	168	210	22	–	282.5	173.7	28.6	246	138	UT 35
100	4"	157	200	254	22	–	305	196.5	31.8	246	138	UT 35

Dimensions in mm. With integrated mounting pad acc. to DIN/ISO 5211 for direct actuator mounting.  
 Temperature range -10°C to 200°C (see pressure-temperature curve).

2-part flange ball valve of stainless steel  
 full opening, DIN/ISO 5211 top flange, square operating shaft  
 ANSI Class 150/300 DN 1/2" – DN4"

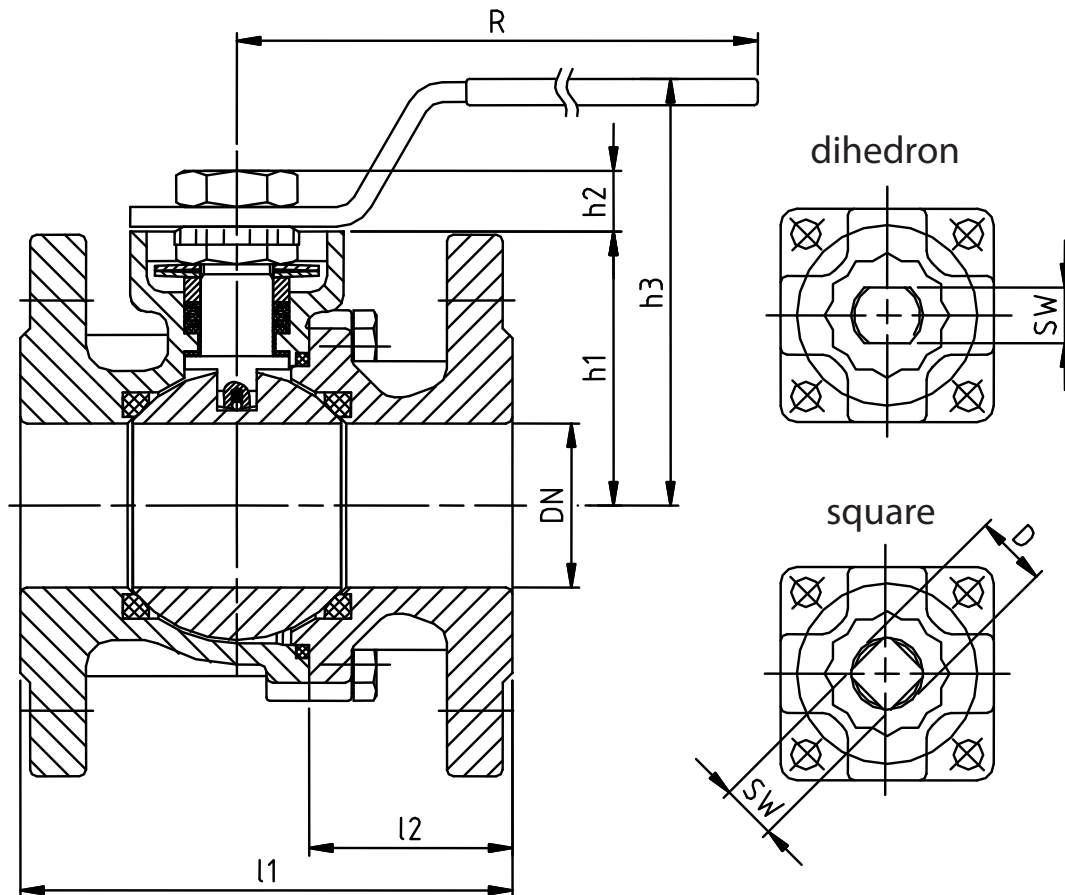
materials



pos.	description	amount	material
1	body	1	1.4408
2	end cap	1	1.4408
3	ball	1	CF8 / SUS 304
4	seat	2	RPTFE
5	body gasket	1	PTFE
6	stem	1	SUS 316
7	thrust washer	1	PTFE
8	gland packing	1	RPTFE
9	gland	1	SUS 316
10	disc spring	2	SUS 301

pos.	description	amount	material
11	tab washer	1	SUS 304
12	stem nut	1	SUS 304
13	handle	1	carbon steel
14	handle nut	1	carbon steel
15	anti-static	1	SUS 316
16	stopper	1 set	SUS 304
17	hex bolt		A4-70
18	cover	1	plastic
19	ring	1	PTFE

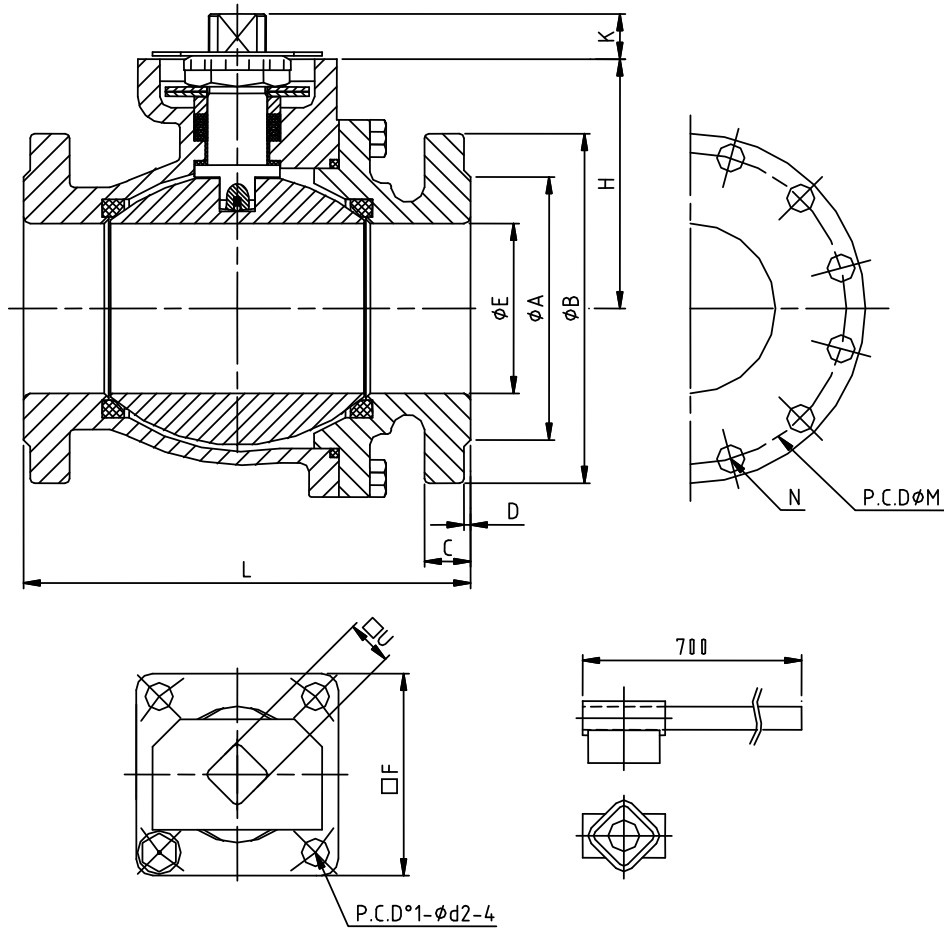
2-part flange ball valve of stainless steel  
 full opening, DIN/ISO 5211 top flange for direct mounting of the actuator  
 PN 16 / 40 DN 15–100 (1/2"–4")



DN		l1		l2		h1	h2		h3	R	ISO 5211	SW		D
[mm]	[inch]	F1	F4	F1	F4		square	dihedron				square	dihedron	
15	1/2	130	115	63.5	48.5	50	11	12	92	180	F05	11	11	14
20	3/4	150	120	81.5	51.5	53.5	11	12	95.5	180	F05	11	11	14
25	1	160	125	87	52	58.5	14	15.5	100.5	180	F05	14	14	18
32	1 1/4	180	130	107	57	71	14	15.5	113	180	F05	14	14	18
40	1 1/2	200	140	119	59	76	17	18.5	122.5	300	F07	18	17	22
50	2	230	150	142	62	83.5	17	18.5	130	300	F07	18	17	22
65	2 1/2	290	170	192	72	95	17	18.5	141.5	300	F07	18	17	22
80	3	310	180	201.2	71.2	113	22	20.5	194.5	400	F10	22	19	26
100	4	350	190	235.5	75.5	131	22	20.5	212.5	400	F10	22	19	26

Overall length acc. DIN 3202 F1, F4. Dimensions in mm. Integrated top flange acc. DIN/ISO 5211 for direct mounting of the actuator. Temperature range -10°C to 200°C (see pressure-temperature curve).

2-part flange ball valve of stainless steel  
 full opening, DIN/ISO 5211 top flange, square operating shaft  
 PN 16 / 40 DN 125–200 (5"–8")

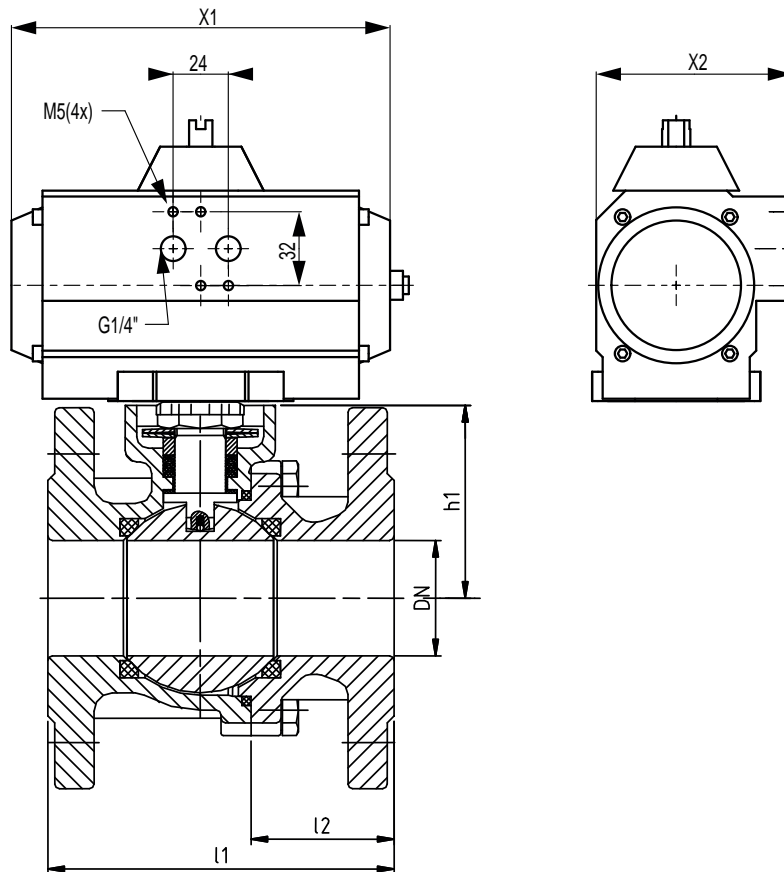


PN 16															
DN	A	B	C	D	M	K	N	L	d1	d2	E	F	H	U	
125	5"	188	250	22	3	210	22	Ø18-8	325	102	F10	125	90	151.5	22
150	6"	212	285	22	3	240	37	Ø22-8	350	140	F14	152	128	217	36
300	8"	268	340	24	3	295	37	Ø22-12	400	140	F15	203	128	252	36

PN 40															
DN	A	B	C	D	M	K	N	L	d1	d2	E	F	H	U	
125	5"	188	270	26	3	220	22	Ø26-8	325	102	F10	125	90	151.5	22
150	6"	218	300	28	3	250	37	Ø26-8	350	140	F14	152	128	217	36
300	8"	285	375	34	3	320	37	Ø30-12	400	140	F15	203	128	252	36

Dimensions in mm. Integrated top flange acc. DIN/ISO 5211 for direct mounting of the actuator.  
 Temperature range -10°C to 200°C (see pressure-temperature curve).

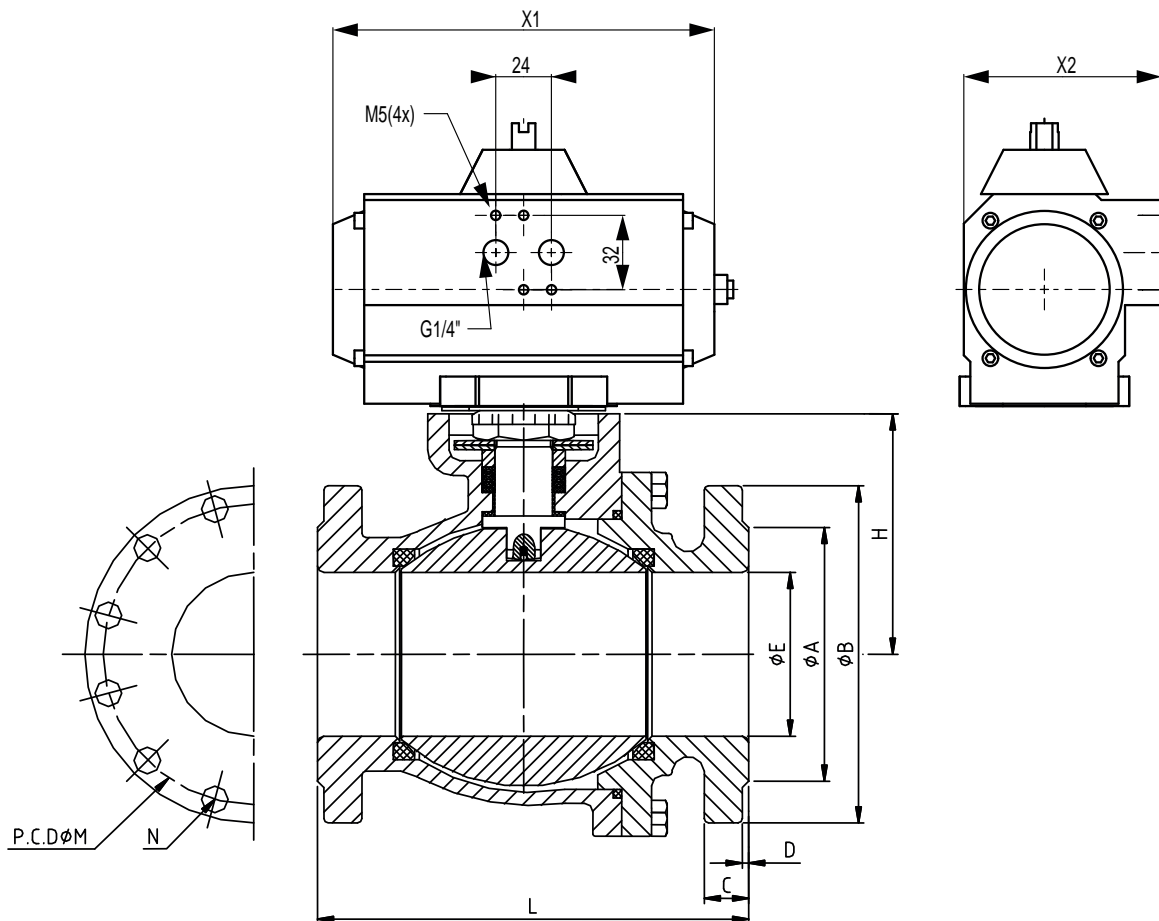
2-part flange ball valve of stainless steel  
 full opening, DIN/ISO 5211 top flange, square operating shaft and pneumatic  
 double-acting actuator  
 PN 16 / 40 DN 15–100 (1/2"–4")



DN		l1		l2		h1	ISO 5211	X1	X2	rotating drive
[mm]	[inch]	F1	F4	F1	F4					
15	1/2	130	115	63.5	48.5	50	F05	119	67	UT 05
20	3/4	150	120	81.5	51.5	53.5	F05	165	85	UT 15
25	1	160	125	87	52	58.5	F05	165	85	UT 15
32	1 1/4	180	130	107	57	71	F05	165	85	UT 15
40	1 1/2	200	140	119	59	76	F07	197	85	UT 17
50	2	230	150	142	62	83.5	F07	177	96	UT 20
65	2 1/2	290	170	192	72	95	F07	230	113	UT 30
80	3	310	180	201.2	71.2	113	F10	246	138	UT 35
100	4	350	190	235.5	75.5	131	F10	246	138	UT 35

Overall length acc. DIN 3202 F1, F4. Dimensions in mm. Integrated top flange acc. DIN/ISO 5211 for direct mounting of the actuator. Temperature range -10°C to 200°C (see pressure-temperature curve).

2-part flange ball valve of stainless steel  
 full opening, DIN/ISO 5211 top flange, square operating shaft and pneumatic  
 double-acting actuator  
 PN 16 / 40 DN 125–200 (5"–8")



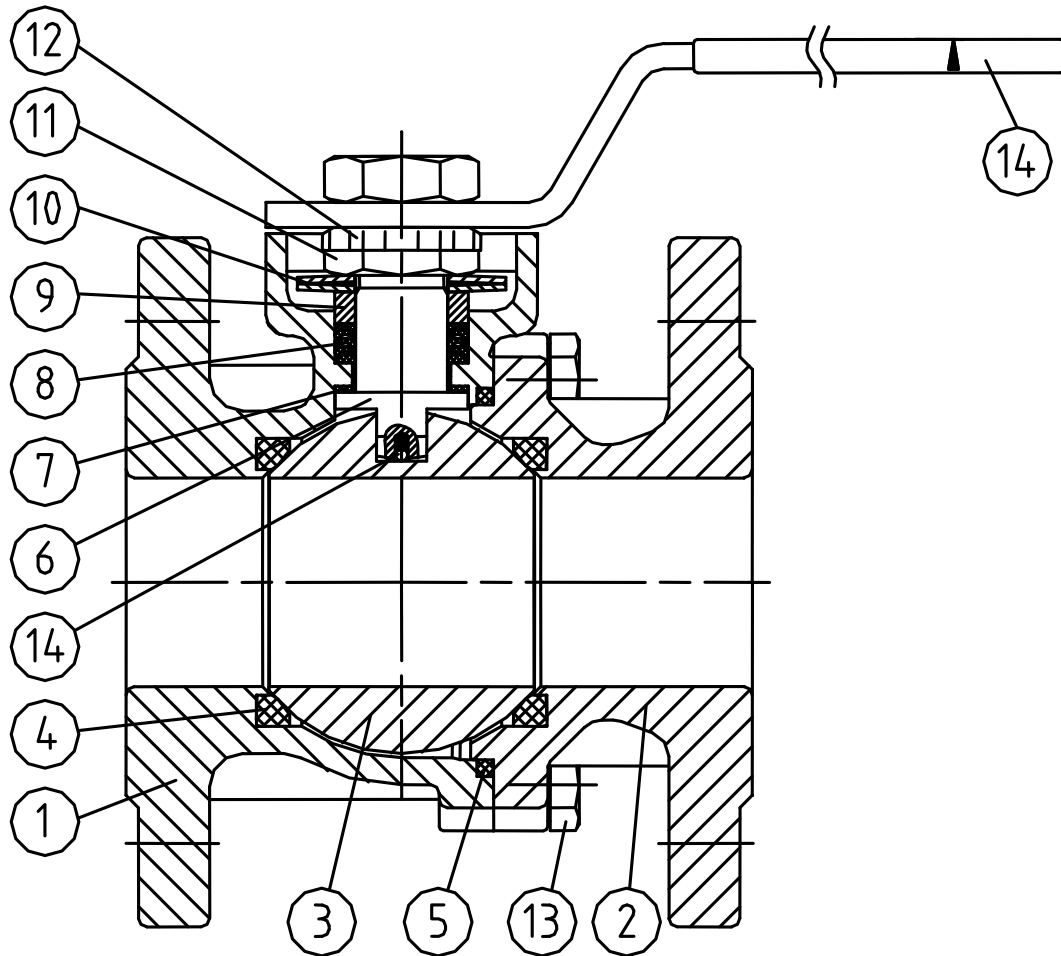
PN 16																
DN	A	B	C	D	M	K	N	L	d1	d2	E	H	X1	X2	rotating drive	
125	5"	188	250	22	3	210	22	Ø18-8	325	102	F10	125	151.5	351	151	UT45
150	6"	212	285	22	3	240	37	Ø22-8	350	140	F14	152	217	391	185	UT50
300	8"	268	340	24	3	295	37	Ø22-12	400	140	F15	203	252	418	185	UT55

PN 40																
DN	A	B	C	D	M	K	N	L	d1	d2	E	H	X1	X2	rotating drive	
125	5"	188	270	26	3	220	22	Ø26-8	325	102	F10	125	151,5	351	151	UT45
150	6"	218	300	28	3	250	37	Ø26-8	350	140	F14	152	217	391	185	UT50
300	8"	285	375	34	3	320	37	Ø30-12	400	140	F15	203	252	418	185	UT55

Dimensions in mm. Integrated top flange acc. DIN/ISO 5211 for direct mounting of the actuator.  
 Temperature range -10°C to 200°C (see pressure-temperature curve).

2-part flange ball valve of stainless steel  
 full opening, DIN/ISO 5211 top flange for direct mounting of the actuator  
 PN 16 / 40 DN 15–100 (1/2"–4")

materials



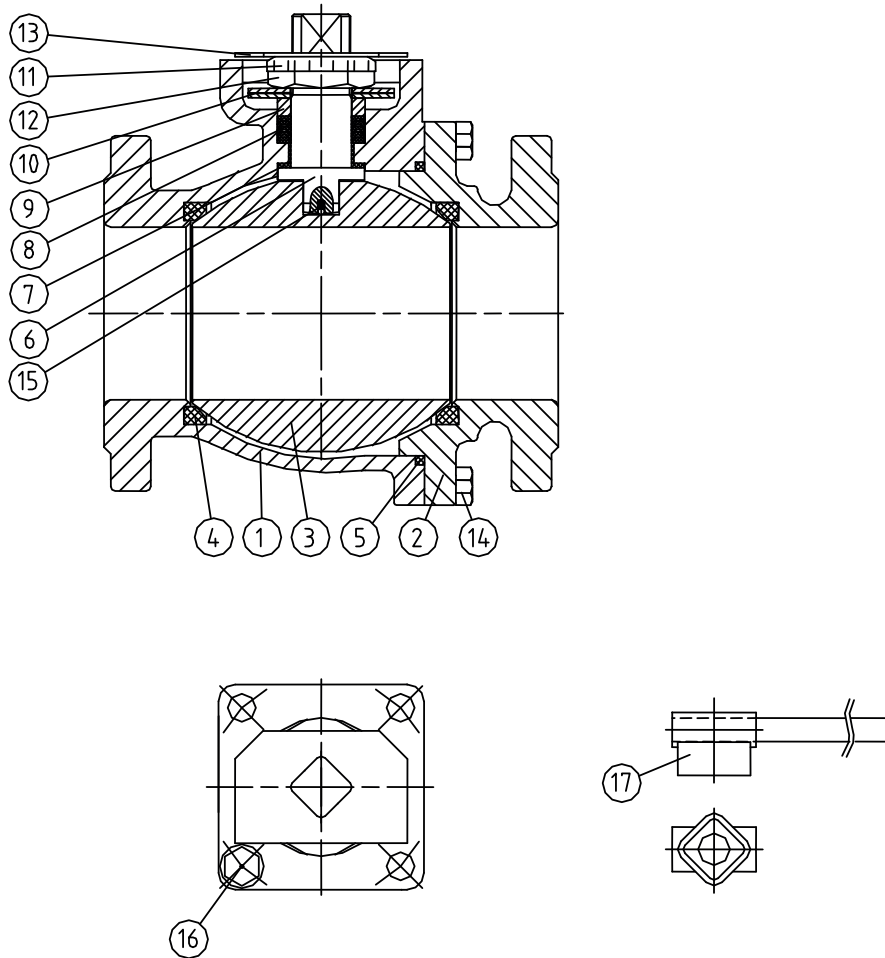
pos.	description	amount	material
1	body	1	1.4408
2	part of body	1	1.4408
3	ball	1	1.4401/1.4408
4	spherical seat	2	RPTFE
5	body gasket	1	PTFE
6	stem	1	1.4401
7	lower bearing	1	RPTFE
8	V-ring packing	1	PTFE / conductive PTFE

pos.	description	amount	material
9	clamping ring	1	1.4401
10	disc spring	2	1.4310
11	hexagon nut	1	A2-70
12	locking plate	1	1.4301
13	stop plate	1	1.4308
14	hexagon screw		A4-70
15	anti-static ball	1	1.4401
16	handle	1	1.4301



2-part flange ball valve of stainless steel  
 full opening, DIN/ISO 5211 top flange, square operating shaft  
 PN 16 / 40 DN 125–200 (5"–8")

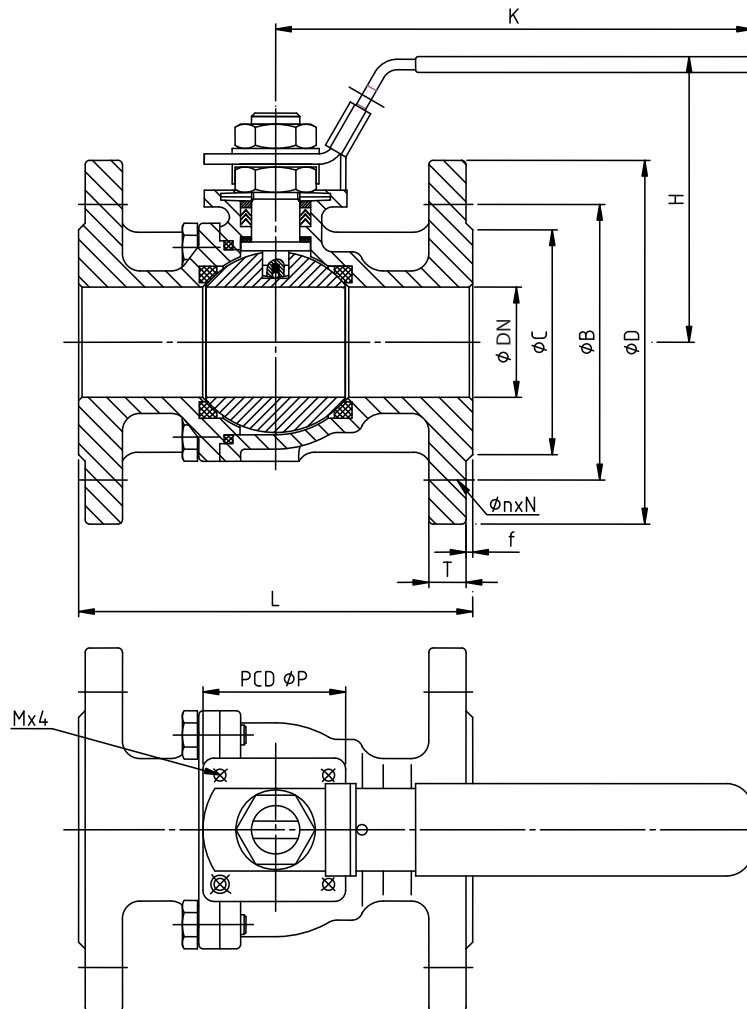
materials



pos.	description	amount	material
1	body	1	1.4408
2	screwed socket	1	1.4408
3	ball	1	1.4401
4	seat	2	RPTFE
5	body gasket	1	PTFE
6	stem	1	1.4401
7	clamping ring	1	RPTFE
8	gland packing	1 set	PTFE / conductive PTFE
9	gland	1	1.4301

pos.	description	amount	material
10	disc spring	2	1.4310
11	locking plate	1	1.4301
12	hexagon nut	1	A2-70
13	stop plate	1	1.4308
14	hexagon screw		A2-70
15	anti-static ball	1	1.4401
16	Anschlag	1	A2-70
17	handle		1.4308

2-part flange ball valve (F) of stainless steel  
hand lever, full opening  
PN 40 / DN 15–50, PN 16 / DN 65–100



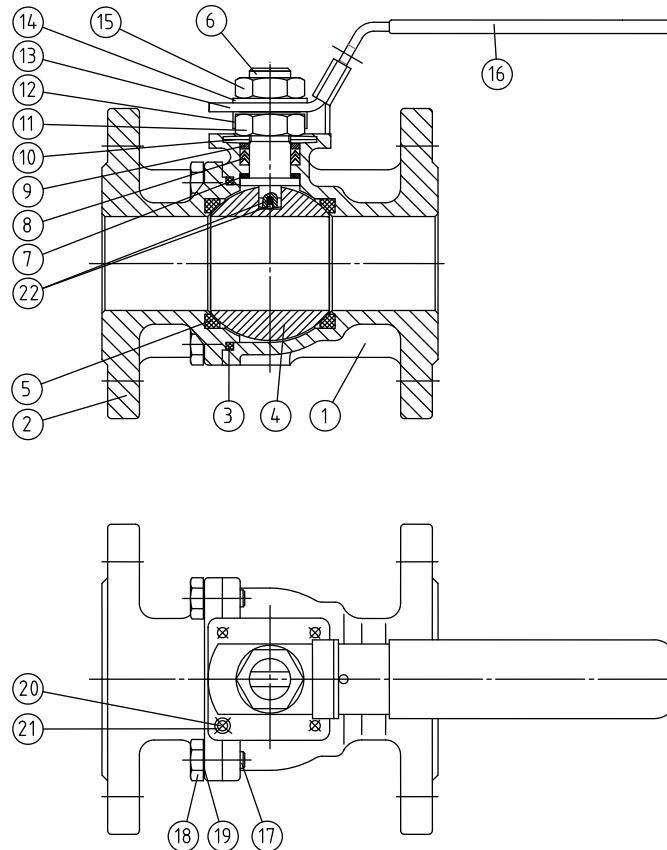
DN	Ø B	Ø C	Ø D	E	Ø F	H	K	L	T	f	Ø n	N	M	Ø P
15	65	45	95	8	12	72	145	115	16	2	14	4	5	42/F04
20	75	58	105	8	12	74	145	120	18	2	14	4	5	42/F04
25	85	68	115	8.7	14	81	178	125	18	2	14	4	6	50/F05
32	100	78	140	8.7	14	87	178	130	18	2	18	4	6	50/F05
40	110	88	150	15	22	126	255	140	18	3	18	4	8	70/F07
50	125	102	165	15	22	136	255	150	20	3	18	4	8	70/F07
65	145	122	185	15	22	155	255	170	18	3	18	4	8	70/F07
80	160	138	200	17	25.8	167	350	180	20	3	18	8	10	102/F10
100	180	158	220	17	25.8	179	400	190	20	3	18	8	10	102/F10

Overall length according to DIN 3202 F4/short.

Dimensions in mm. Temperature range -10°C to 200°C (see pressure-temperature curve).

2-part flange ball valve (F) of stainless steel  
 hand lever, full opening  
 PN 40 / DN 15–50, PN 16 / DN 65–100

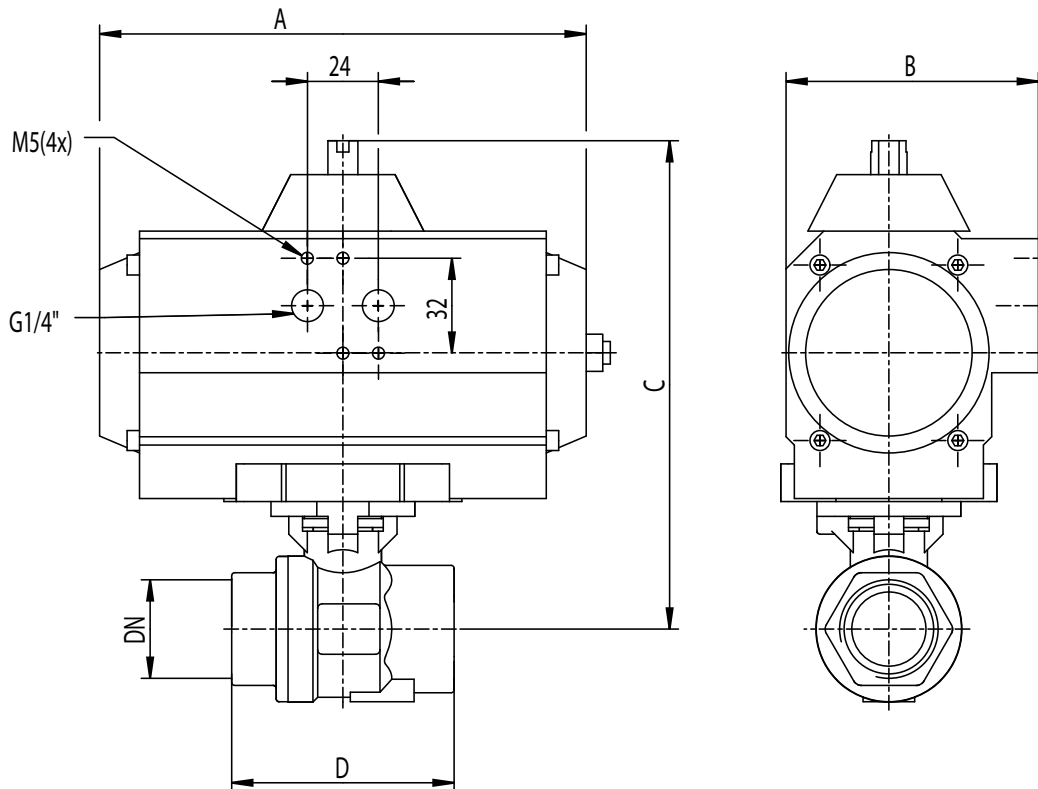
materials



pos.	description	amount	material
1	housing	1	1.4408
2	end piece	1	1.4408
3	housing seal	1	PTFE
4	ball	1	1.4401
5	ball seal	2	reinforced PTFE
6	operating shaft	1	1.4401
7	clamping ring	1	PTFE
8	operating shaft seal	2	PTFE
9	stuffing box	1	1.4301
10	disc spring	2	1.4301
11	operating shaft nut	1	1.4301

pos.	description	amount	material
12	circlip	1	1.4301
13	body stop	1	1.4301
14	washer	1	1.4301
15	nut	1	1.4301
16	handle	1	1.4301
17	screw	4-8	1.4301
18	nut	4-8	1.4301
19	washer	4-8	1.4301
20	screw	1	1.4301
21	washer	1	1.4301
22	antistatic spring	2	1.4301

2-part ball valve of stainless steel  
 thread end (T), full opening, DIN/ISO 5211 top flange, square operating shaft and  
 pneumatic part turn actuator (PD = pneumatic double-acting; PE = pneumatic  
 single-acting)  
 PN 63 DN 8 (1/4") – DN 80 (3")



ball valve with rotating drive - PD = pneumatic double-acting

DN	A	B	C	D	rotating drive
8	119	67		51	UT 05
10	119	67		51	UT 05
15	119	67	156	63	UT 05
20	165	85	162	65	UT 15
25	165	85	165	75	UT 15
32	165	85	193	87	UT 15
40	197	85	197	95	UT 17
50	177	96	227	111	UT 20
65	230	113	287	185	UT 30
80	246	138	296	205	UT 35

ball valve with rotating drive - PE = pneumatic single-acting

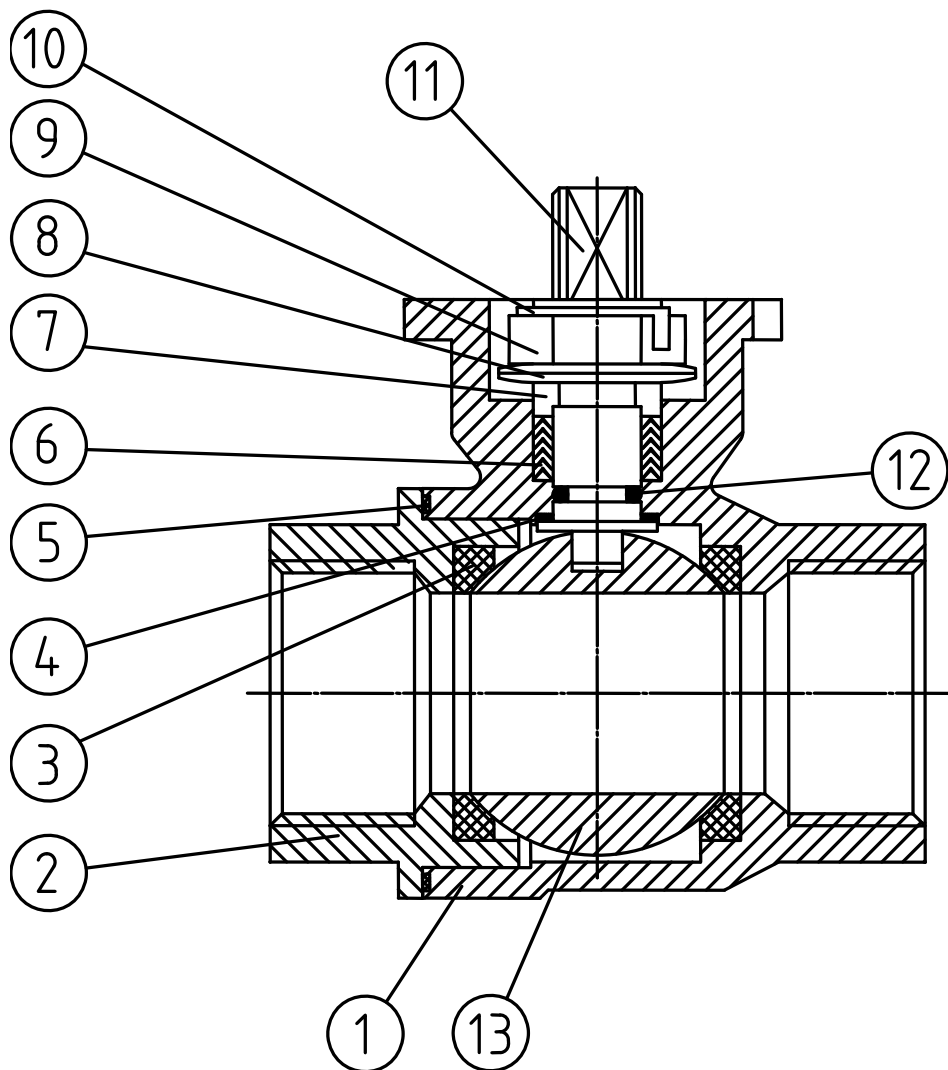
DN	A	B	C	D	rotating drive
8	119	67		51	UT 05s2
10	119	67		51	UT 05s2
15	119	67	156	63	UT 15s4
20	165	85	162	65	UT 15s4
25	165	85	165	75	UT 17s4
32	197	85	193	87	UT 20s4
40	177	96	197	95	UT 25s4
50	230	113	227	111	UT 30s4
65	246	138	287	185	UT 35s4
80	290	138	296	205	UT 40s4

Actuator design 5 bar control pressure.

Thread according to DIN 2999, dimensions in mm. Temperature range -10°C to 200°C (see pressure-temperature curve).

2-part ball valve of stainless steel  
 thread end (T), full opening, DIN/ISO 5211 top flange  
 PN 63 DN 8 (1/4") – DN 80 (3")

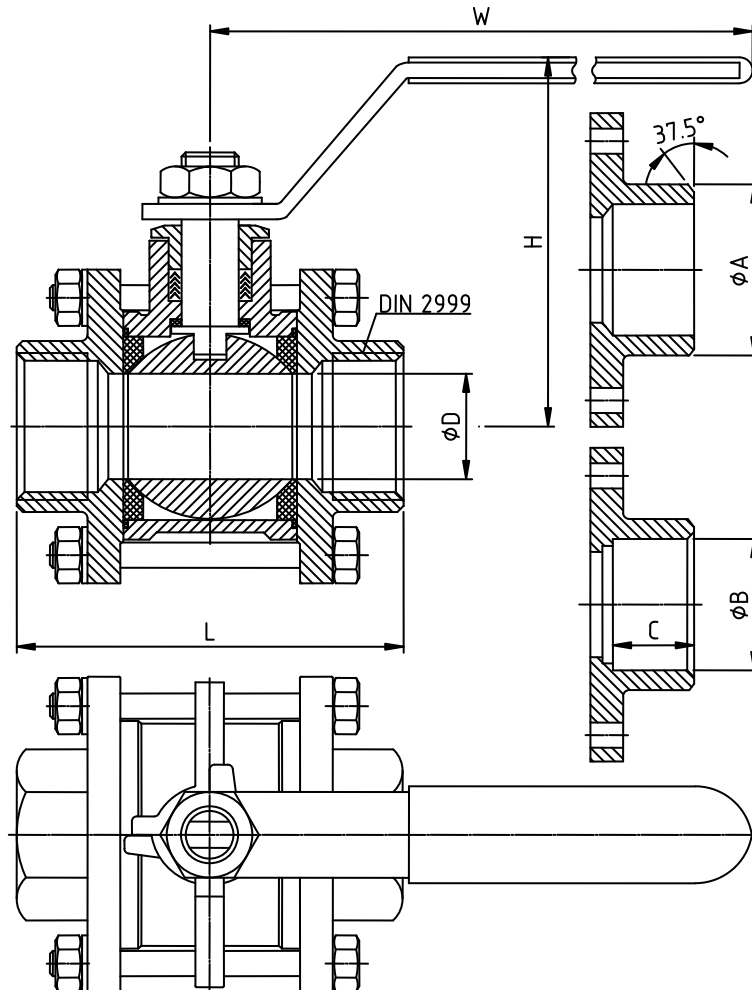
materials



pos.	description	amount	material
1	housing	1	1.4408
2	end piece	1	1.4408
3	ball seal	2	PTFE
4	clamping ring	1	PTFE
5	housing seal	1	PTFE
6	operating shaft seal	2	PTFE
7	stuffing box nut	1	1.4401

pos.	description	amount	material
8	disc spring	2	1.4301
9	nut	1	1.4301
10	circlip	1	1.4301
11	operating shaft	1	1.4401
12	O-ring	1	Viton
13	ball	1	1.4401

3-part ball valve of stainless steel  
 hand lever, thread end (T) or welding end (B), full opening  
 PN 63 DN 8–100 (1/4" – 4")  
 optional: type VL-K551T/B-Hv with lockable hand lever

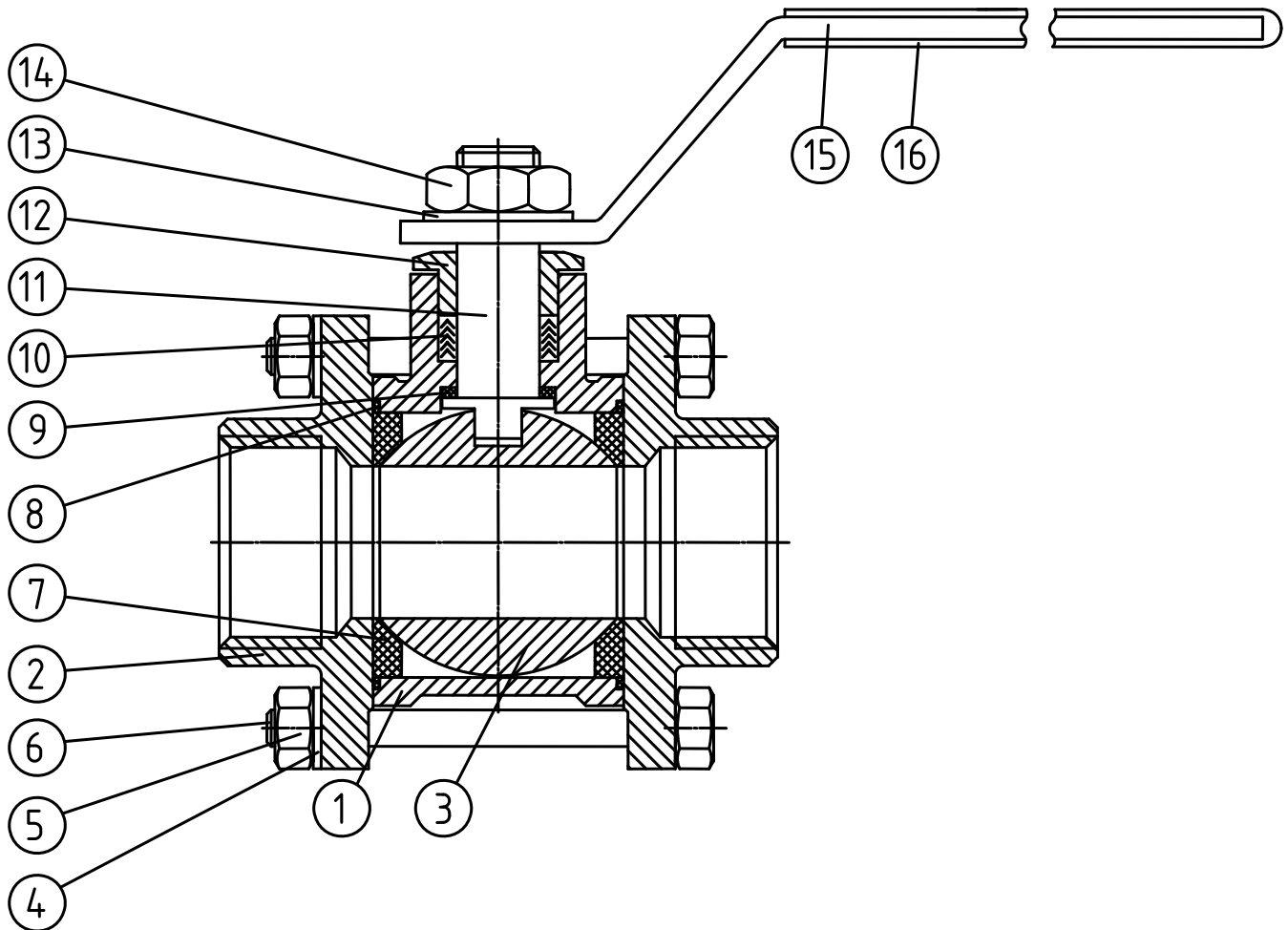


DN	Ø D	L	H	W	Ø A	Ø B	C
8	11	50	56	90	18.5	14.2	10
10	12,5	60	56	90	18.5	17.6	10
15	15	75	61	100	22.5	21.8	13
20	20	80	64	100	28.5	27.2	13
25	25.4	90	73	135	34.5	33.9	15
32	32	110	78	135	43.5	42.7	15
40	38	120	87	170	50	48.8	16
50	50	140	96	170	63	61.2	16
65	65	185	145	260	84	73.9	17
80	80	205	155	260	98	89.8	17
100	100	240	181	280	117	115.3	20

Thread according to DIN 2999,  
 dimensions in mm.  
 Temperature range -10°C to 200°C  
 (see pressure-temperature curve).

3-part ball valve of stainless steel  
 hand lever, thread end (T) or welding end (B), full opening  
 PN 63 DN 8–100 (1/4" – 4")  
 optional: type VL-K551T/B-Hv with lockable hand lever

## materials



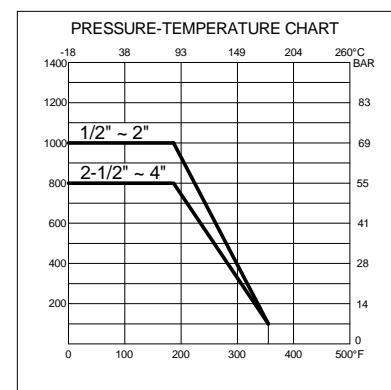
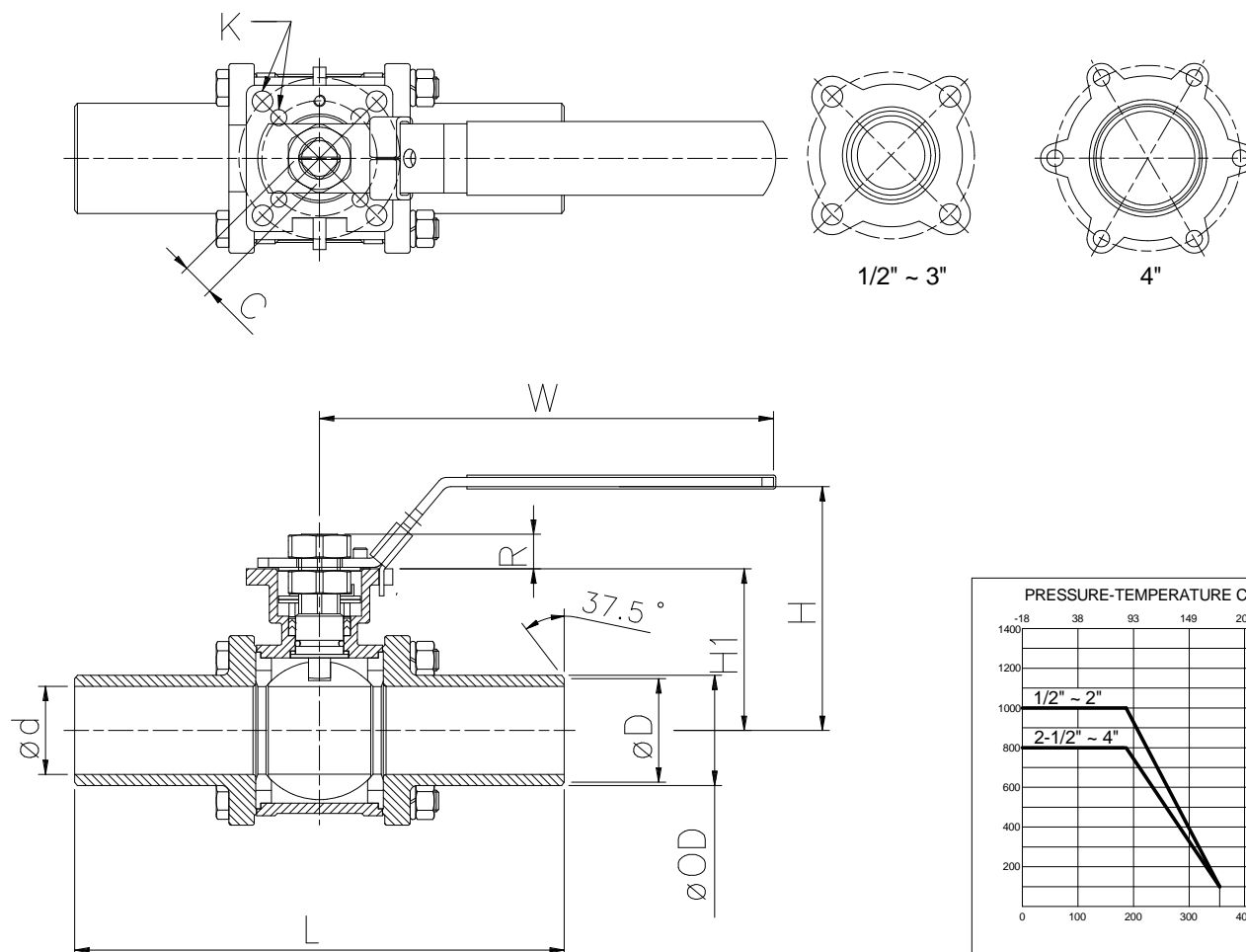
pos.	description	amount	material
1	housing	1	1.4408
2	end piece	2	1.4408
3	ball	1	1.4401
4	washer	4	1.4301
5	nut	4	1.4301
6	screw	4	1.4301
7	ball seal	2	PTFE
8	housing seal	2	PTFE
9	clamping ring	1	PTFE

pos.	description	amount	material
10	operating shaft seal	1 set	PTFE
11	operating shaft	1	1.4401
12	stuffing box	1	1.4301
13	washer	1	1.4301
14	nut	1	1.4301
15	handle	1	1.4301
16	handle coat	1	plastics
-	locking device	1	1.4301 (optional)

3-part ball valve of stainless steel

lockable hand lever, long welding ends, full opening

PN 63 DN 15–50 (1/2"–2") resp. PN 40 DN 65–100 (2"–4")



DN	C	Ø d	Ø D	Ø OD	H	H1	K	L	R	W	
15	1/2"	9	15	18.2	22.8	73	36	F03/F04	220	9	111
20	3/4"	9	20	23.3	28.4	78	41	F03/F04	220	9	111
25	1"	11	25	28.2	35.2	87.5	49.5	F04/F05	240	11	186
32	1 1/4"	11	32	35.2	44.4	94	56	F04/F05	254	11	186
40	1 1/2"	14	38	41.2	50.3	109	70	F05/F07	260	14	200
50	2"	14	50	53.2	63	117	78	F05/F07	270	14	200
65	2 1/2"	17	65	69	79.5	139	98	F07/F010	338	17	265.5
80	3"	17	80	84	92.5	149.5	109.5	F07/F010	350	17	265.5
100	4"	22	100	107	117.5	195	140	F010/F012	350	22	321

Dimensions in mm.

Temperature range -18°C to 177°C (see pressure-temperature curve).

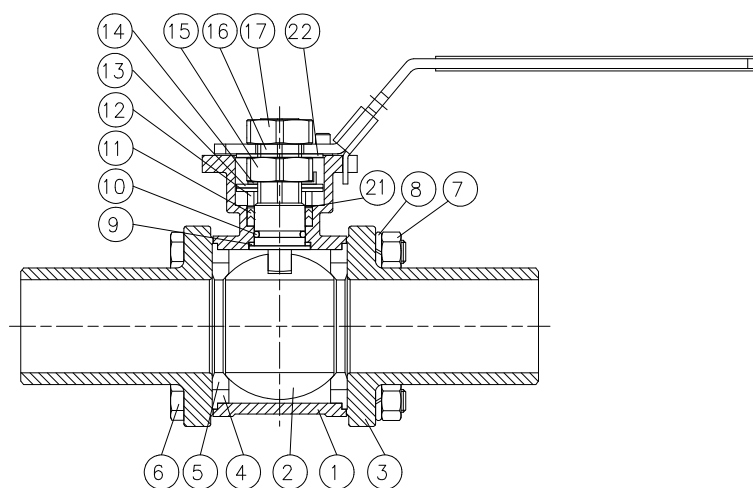
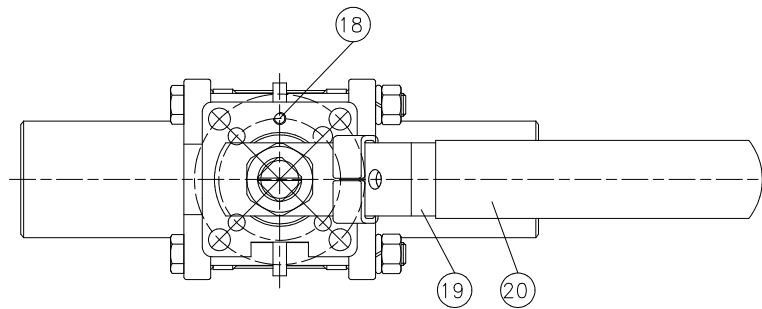


3-part ball valve of stainless steel

lockable hand lever, long welding ends, full opening

PN 63 DN 15–50 (1/2"–2") resp. PN 40 DN 65–100 (2"–4")

materials



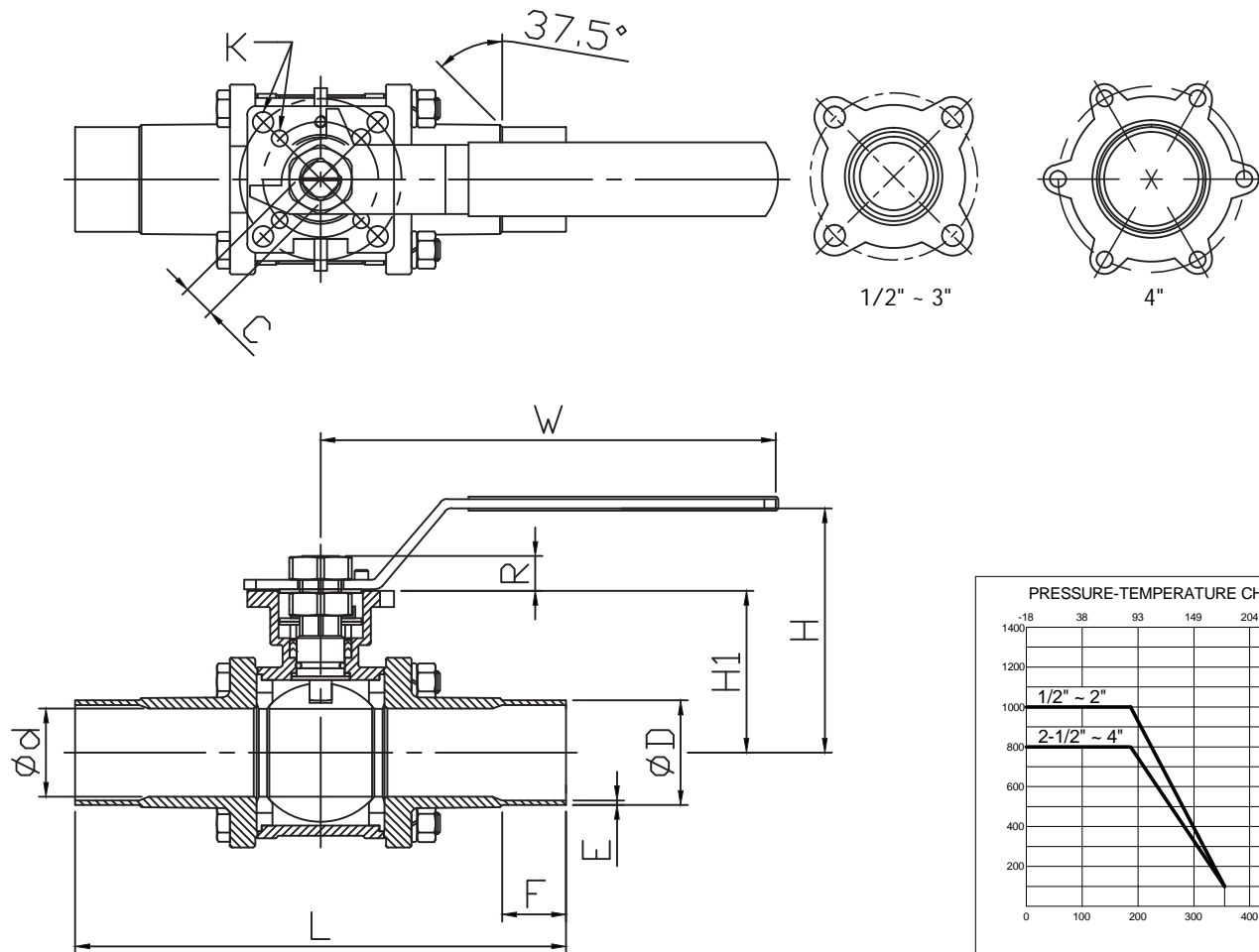
pos.	description	amount	material
1	body	1	ASTM-A351-CF8M
2	ball	1	ASTM-A351-CF8M
3	cap	2	ASTM-A351-CF8M
4	seat	2	PTFE
5	joint gasket	2	PTFE
6	bolt	4-6	SUS 304
7	nut	4-12	SUS 304
8	spring washer	4-12	SUS 304
9	thrust washer	1	PTFE
10	O-ring	1	VITON
11	stem packing	1	PTFE

pos.	description	amount	material
12	glant bush	1	SUS 304
13	belleville washer	2	SUS 301
14	stop washer	1	SUS 304
15	stem nut	1	SUS 304
16	stem	1	SUS 316
17	handle nut	1	SUS 304
18	stop pin	1	SUS 304
19	handle	1	SUS 304
20	handle cover	1	plastic
21	thrust washer	1	PTFE 15%
22	square washer	1	SUS 304

3-part ball valve of stainless steel

lockable hand lever, long welding ends, full opening

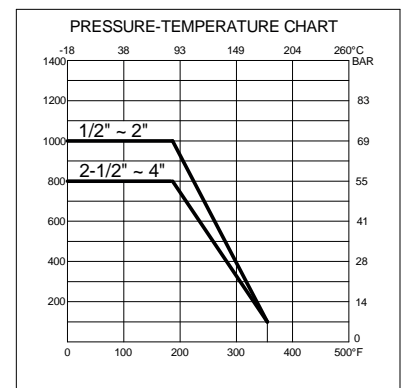
PN 63 DN 15–50 (1/2"–2") resp. PN 40 DN 65–100 (2"–4")



DN	C	Ø d	ISO Standard		F	H	H1	K	L	R	W	
			Ø D	E								
15	1/2"	9	15	21.3	2	20	73	36	F03/F04	218	9	111
20	3/4"	9	20	26.9	2	20	78	41	F03/F04	218	9	111
25	1"	11	25	33.7	2	20	87.5	49,5	F04/F05	236	11	186
32	1 1/4"	11	32	42.4	2	20	94	56	F04/F05	250	11	186
40	1 1/2"	14	38	48.3	2	20	109	70	F05/F07	256	14	200
50	2"	14	50	60.3	2	20	117	78	F05/F07	266	14	200
65	2 1/2"	17	65	76.1	2	20	139	98	F07/F010	334	17	265.5
80	3"	17	80	88.9	2	20	149.5	109,5	F07/F010	346	17	265.5
100	4"	22	100	114.3	2	20	195	140	F010/F012	346	22	321

Dimensions in mm.

Temperature range -18°C to 177°C (see pressure-temperature curve).

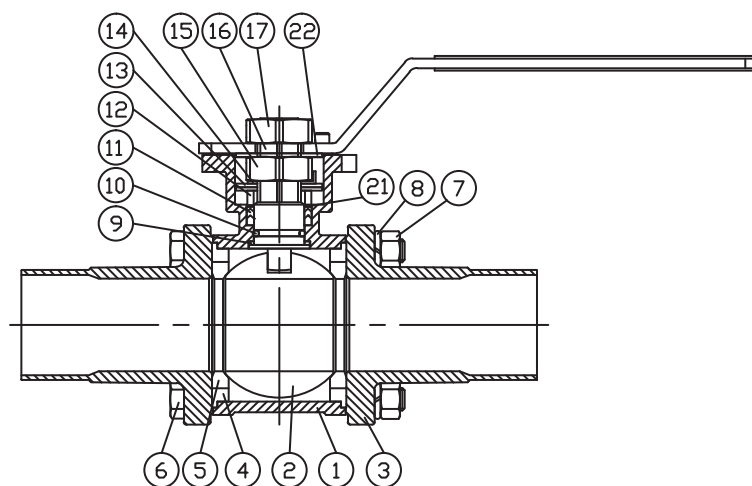
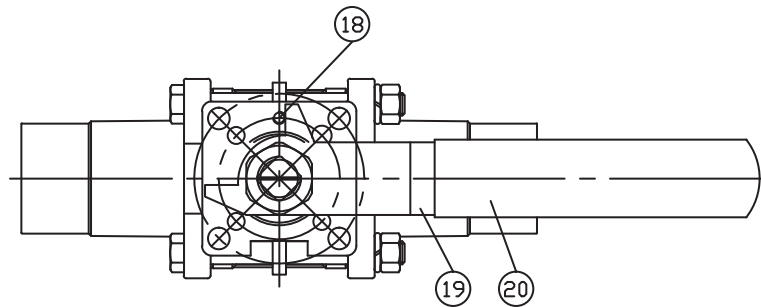


3-part ball valve of stainless steel

lockable hand lever, long welding ends, full opening

PN 63 DN 15–50 (1/2"–2") resp. PN 40 DN 65–100 (2"–4")

materials

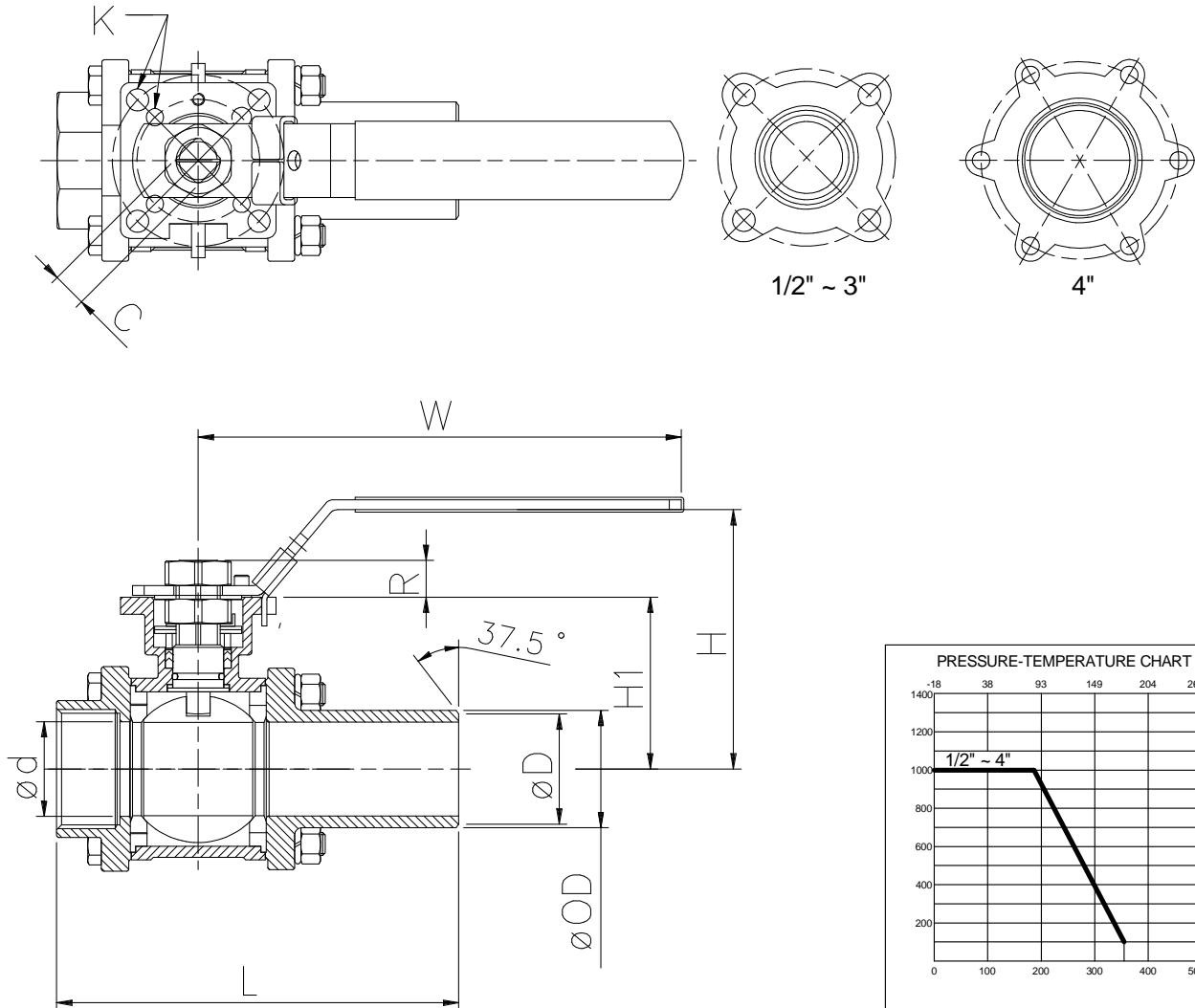


pos.	description	amount	material
1	body	1	ASTM-A351-CF8M
2	ball	1	ASTM-A351-CF8M
3	cap	2	ASTM-A351-CF8M
4	seat	2	PTFE
5	joint gasket	2	PTFE
6	bolt	4-6	SUS 304
7	nut	4-12	SUS 304
8	spring washer	4-12	SUS 304
9	thrust washer	1	PTFE
10	O-ring	1	VITON
11	stem packing	1	PTFE

pos.	description	amount	material
12	glant bush	1	SUS 304
13	belleville washer	2	SUS 301
14	stop washer	1	SUS 304
15	stem nut	1	SUS 304
16	stem	1	SUS 316
17	handle nut	1	SUS 304
18	stop pin	1	SUS 304
19	handle	1	SUS 304
20	handle cover	1	plastic
21	thrust washer	1	PTFE 15%
22	square washer	1	SUS 304

3-part ball valve of stainless steel

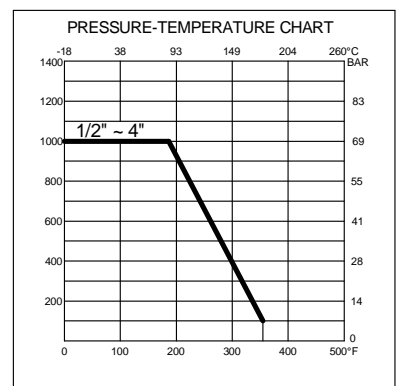
lockable hand lever, 1x thread end, 1x long welding end



DN	C	Ø d	Ø D	Ø OD	H	H1	K	L	R	W	
15	1/2"	9	15	18.2	22.8	73	36	F03/F04	143	9	111
20	3/4"	9	20	23.3	28.4	78	41	F03/F04	145.3	9	111
25	1"	11	25	28.2	35.2	87.5	49.5	F04/F05	163.5	11	186
32	1 1/4"	11	32	35.2	44.4	94	56	F04/F05	178	11	186
40	1 1/2"	14	38	41.2	50.3	109	70	F05/F07	186.8	14	200
50	2"	14	50	53.2	63	117	78	F05/F07	199.5	14	200
65	2 1/2"	17	65	69	79.5	139	98	F07/F010	246.8	17	265.5
80	3"	17	80	84	92.5	149.5	109.5	F07/F010	266	17	265.5
100	4"	22	100	107	117.5	195	140	F010/F012	288	22	321

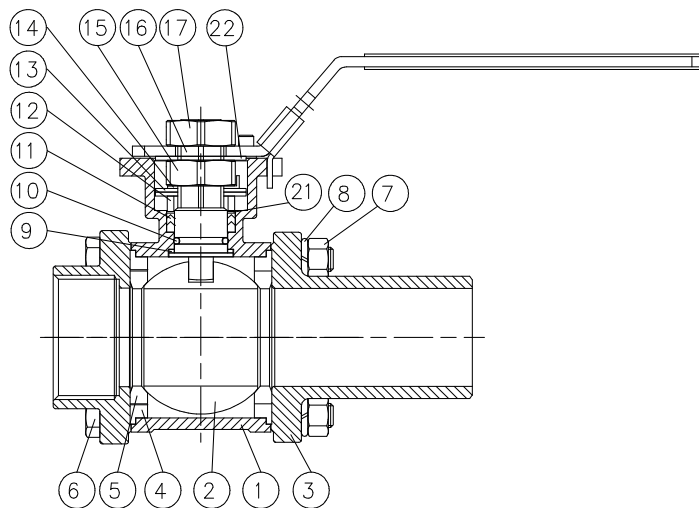
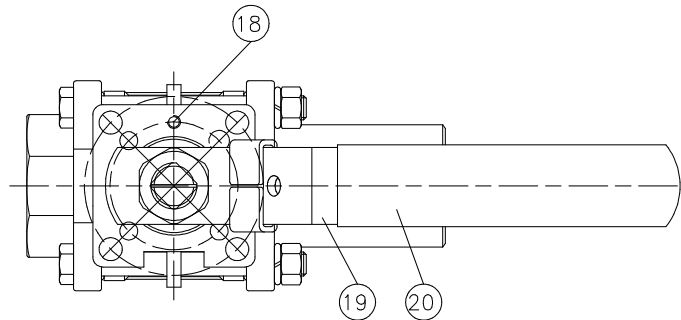
Dimensions in mm.

Temperature range -18°C to 177°C (see pressure-temperature curve).



3-part ball valve of stainless steel  
lockable hand lever, 1x thread end, 1x long welding end

materials

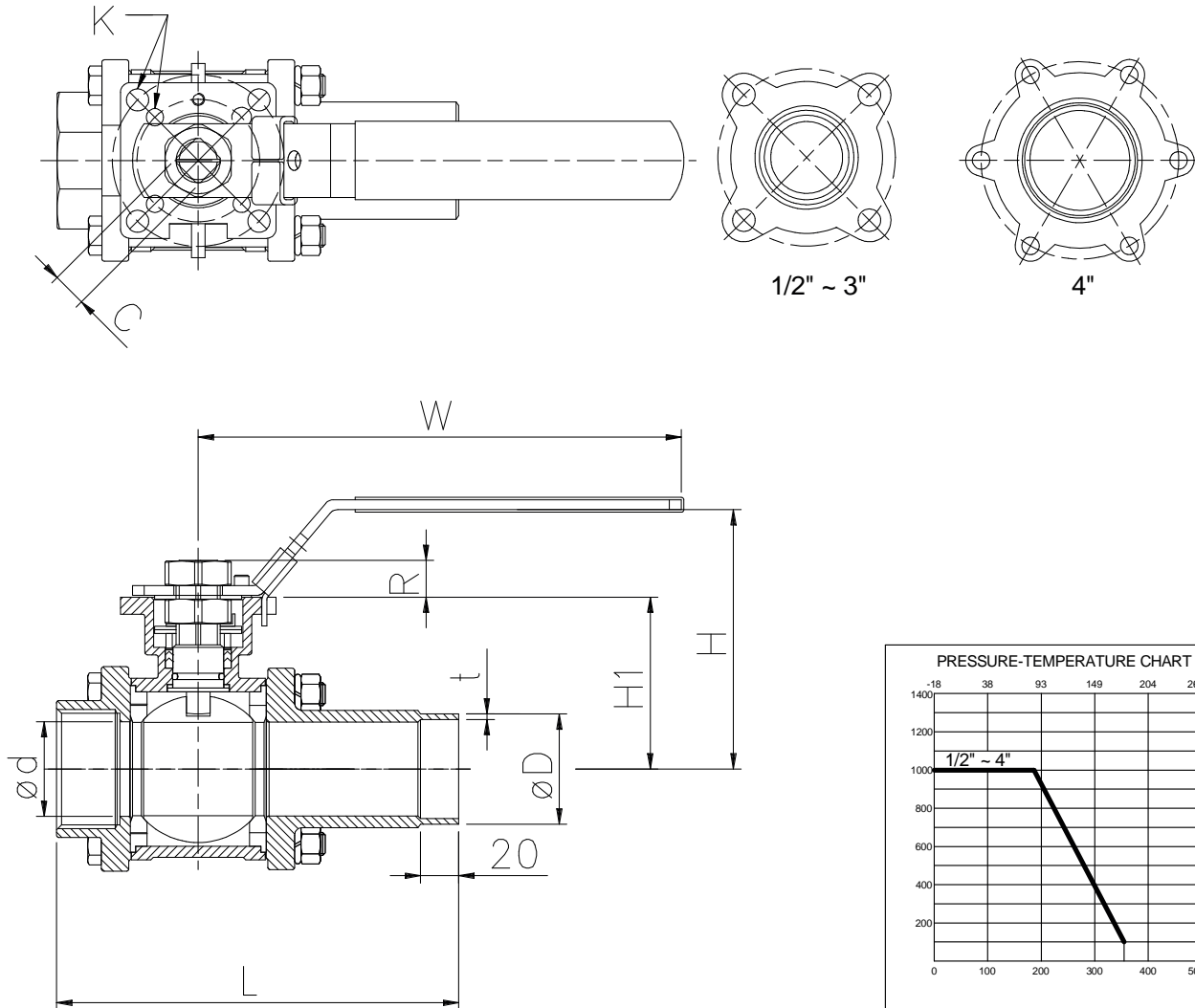


pos.	description	amount	material
1	body	1	ASTM-A351-CF8M
2	ball	1	ASTM-A351-CF8M
3	cap	2	ASTM-A351-CF8M
4	seat	2	PTFE
5	joint gasket	2	PTFE
6	bolt	4-6	SUS 304
7	nut	4-12	SUS 304
8	spring washer	4-12	SUS 304
9	thrust washer	1	PTFE
10	O-ring	1	VITON
11	stem packing	1	PTFE

pos.	description	amount	material
12	glant bush	1	SUS 304
13	belleville washer	2	SUS 301
14	stop washer	1	SUS 304
15	stem nut	1	SUS 304
16	stem	1	SUS 316
17	handle nut	1	SUS 304
18	stop pin	1	SUS 304
19	handle	1	SUS 304
20	handle cover	1	plastic
21	thrust washer	1	PTFE 15%
22	square washer	1	SUS 304

3-part ball valve of stainless steel

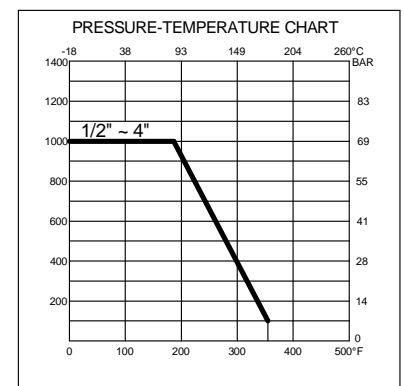
lockable hand lever, 1x thread end, 1x long welding end



DN	C	Ø d	Ø D	t	H	H1	K	L	R	W
15	1/2"	9	15	21.3	2	73	36	F03/F04	142	111
20	3/4"	9	20	26.9	2	78	41	F03/F04	144.3	111
25	1"	11	25	33.7	2	87.5	49.5	F04/F05	161.5	186
32	1 1/4"	11	32	42.4	2	94	56	F04/F05	173	186
40	1 1/2"	14	38	48.3	2	109	70	F05/F07	184.8	200
50	2"	14	50	60.3	2	117	78	F05/F07	197.5	200
65	2 1/2"	17	65	76.1	2	139	98	F07/F010	244.8	265.5
80	3"	17	80	88.9	2	149.5	109.5	F07/F010	264	265.5
100	4"	22	100	114.3	2	195	140	F010/F012	286	321

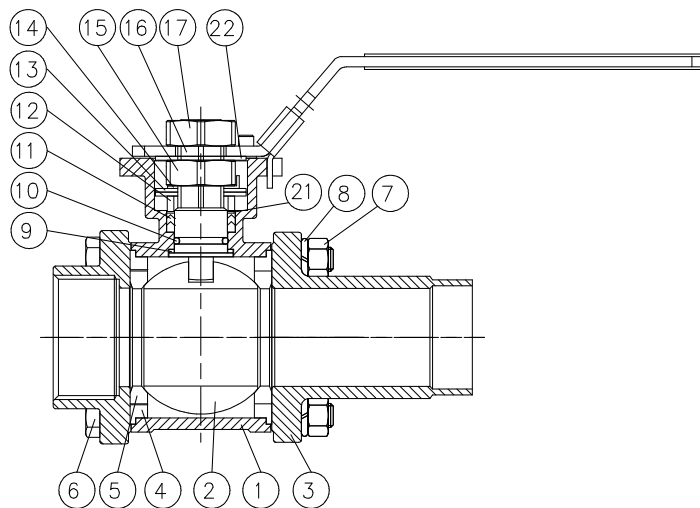
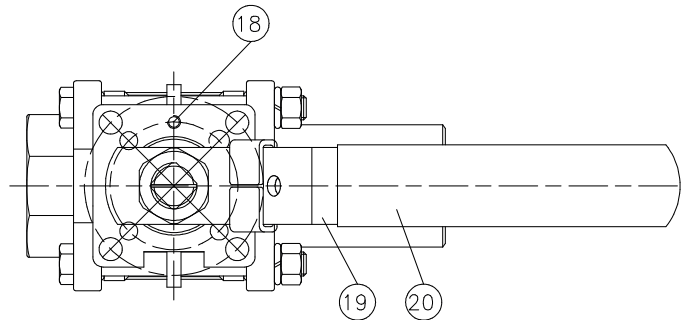
Dimensions in mm.

Temperature range -18°C to 177°C (see pressure-temperature curve).



3-part ball valve of stainless steel  
lockable hand lever, 1x thread end, 1x long welding end

materials



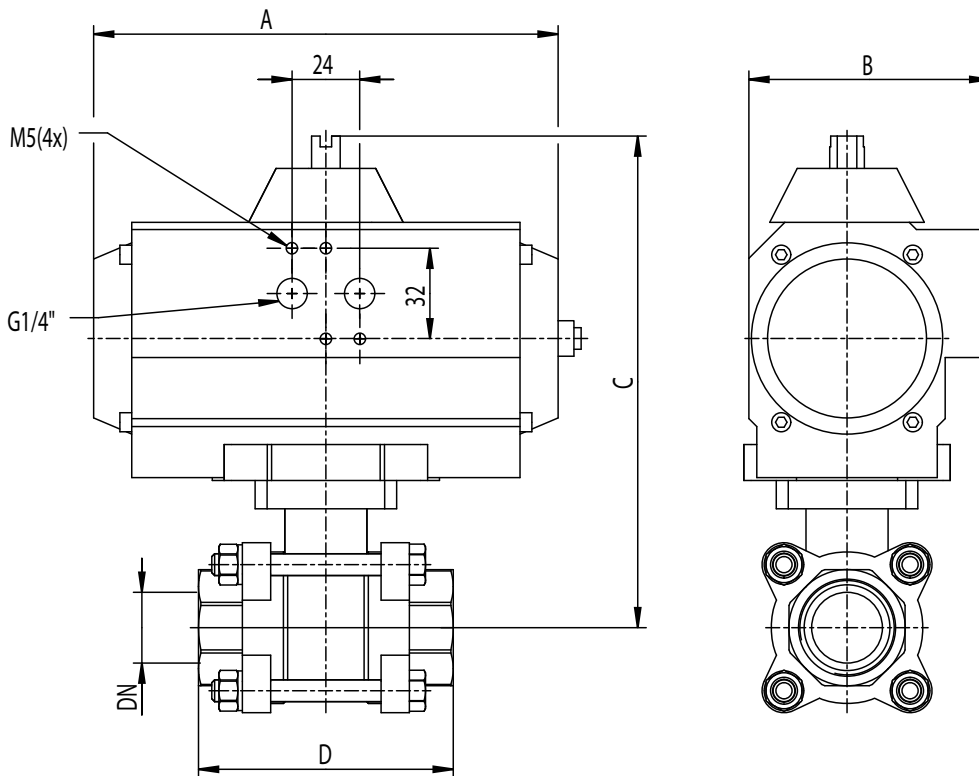
pos.	description	amount	material
1	body	1	ASTM-A351-CF8M
2	ball	1	ASTM-A351-CF8M
3	cap	2	ASTM-A351-CF8M
4	seat	2	PTFE
5	joint gasket	2	PTFE
6	bolt	4-6	SUS 304
7	nut	4-12	SUS 304
8	spring washer	4-12	SUS 304
9	thrust washer	1	PTFE
10	O-ring	1	VITON
11	stem packing	1	PTFE

pos.	description	amount	material
12	glant bush	1	SUS 304
13	belleville washer	2	SUS 301
14	stop washer	1	SUS 304
15	stem nut	1	SUS 304
16	stem	1	SUS 316
17	handle nut	1	SUS 304
18	stop pin	1	SUS 304
19	handle	1	SUS 304
20	handle cover	1	Kunststoff
21	thrust washer	1	PTFE 15%
22	square washer	1	SUS 304

3-part ball valve of stainless steel

DIN/ISO 5211 top flange, thread end (T), pneumatic part turn actuator (PD = pneumatic double-acting; PE = pneumatic single-acting)

PN 63 DN 10–100



ball valve with rotating drive - PD = pneumatic double-acting

DN	A	B	C	D	rotating drive	
8	1/4"	119	67	141	65	UT 05
10	3/8"	119	67	141	65	UT 05
15	1/2"	119	67	141	75	UT 05
20	3/4"	119	67	145	80	UT 05
25	1"	165	85	174	90	UT 15
32	1 1/4"	165	85	179	110	UT 15
40	1 1/2"	165	85	189	120	UT 15
50	2"	177	96	220	140	UT 20
65	2 1/2"	239	96	241	185	UT 25
80	3"	246	138	306	205	UT 35
100	4"	246	138	334	240	UT 35

ball valve with rotating drive - PE = pneumatic single-acting

DN	A	B	C	D	rotating drive	
8	1/4"	165	85	161	65	UT 15s4
10	3/8"	165	85	161	65	UT 15s4
15	1/2"	165	85	161	75	UT 15s4
20	3/4"	197	85	165	80	UT 17s4
25	1"	197	85	173	90	UT 17s4
32	1 1/4"	177	96	201	110	UT 20s4
40	1 1/2"	239	96	211	120	UT 25s4
50	2"	230	113	239	140	UT 30s4
65	2 1/2"	246	138	294	185	UT 35s4
80	3"	391	185	358	205	UT 50s4
100	4"	391	185	385	240	UT 50s4

Actuator design 5 bar control pressure. Overall length according to DIN 3202 M3.

Thread according to DIN 2999, dimensions in mm. Temperature range -10°C to 200°C (see pressure-temperature curve).

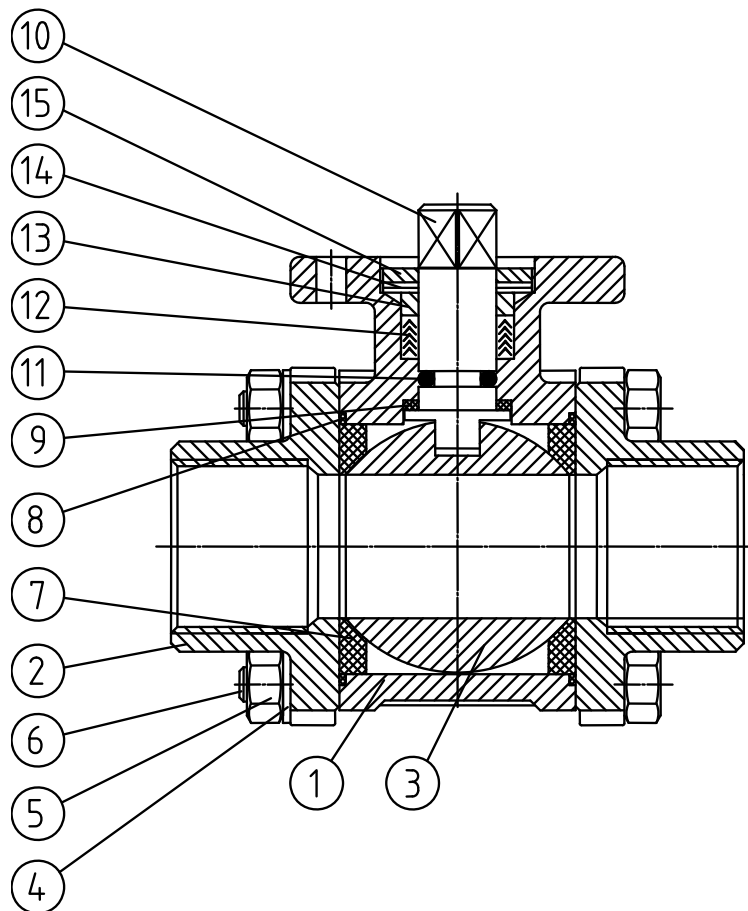


3-part ball valve of stainless steel

DIN/ISO 5211 top flange, thread end (T), pneumatic part turn actuator (PD = pneumatic double-acting; PE = pneumatic single-acting)

PN 63 DN 10–100

materials



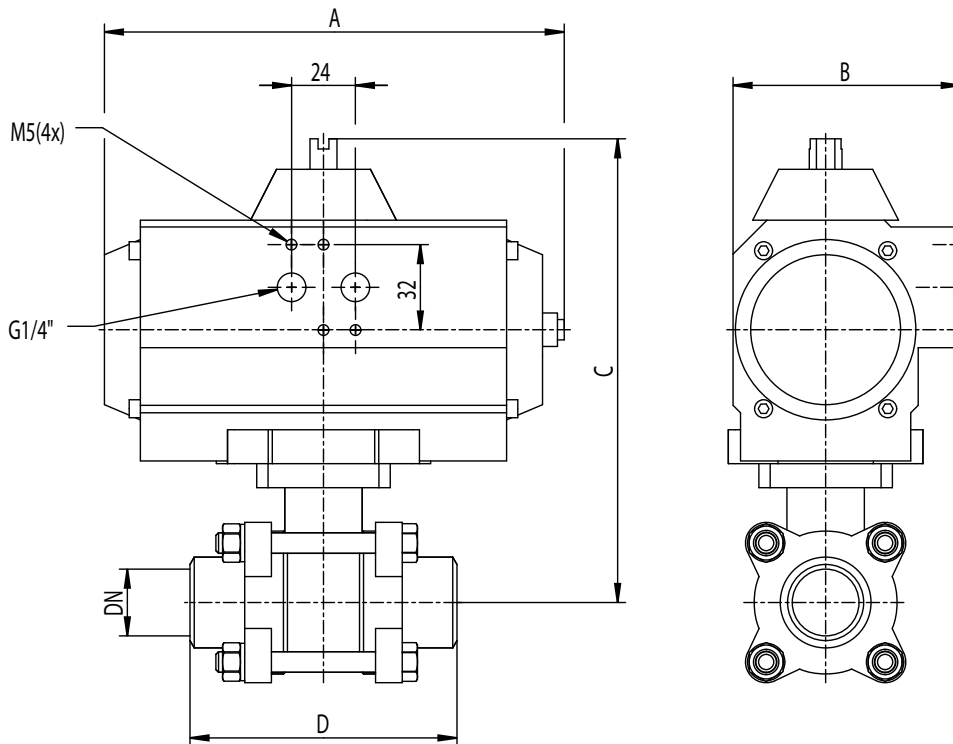
pos.	description	amount	material
1	housing	1	1.4408
2	end piece	2	1.4408
3	ball	1	1.4401
4	washer	4-12	1.4301
5	nut	4-12	1.4301
6	screw	4-12	1.4301
7	ball seal	2	reinforced PTFE
8	housing seal	2	PTFE

pos.	description	amount	material
9	clamping ring	1	PTFE
10	operating shaft	1	1.4401
11	O-ring	1	Viton
12	operating shaft seal	1 set	PTFE
13	stuffing box	1	1.4301
14	spring	2	spring steel
15	nut	1	1.4301

3-part ball valve of stainless steel

DIN/ISO 5211 top flange, welding end (B), pneumatic part turn actuator (PD = pneumatic double-acting; PE = pneumatic single-acting)

PN 63 DN 10–100



ball valve with rotating drive - PD = pneumatic double-acting

DN	A	B	C	D	rotating drive	
8	1/4"	119	67	141	70	UT 05
10	3/8"	119	67	141	70	UT 05
15	1/2"	119	67	141	75	UT 05
20	3/4"	119	67	145	90	UT 05
25	1"	165	85	174	100	UT 15
32	1 1/4"	165	85	179	110	UT 15
40	1 1/2"	165	85	189	125	UT 15
50	2"	177	96	220	150	UT 20
65	2 1/2"	239	96	241	190	UT 25
80	3"	246	138	306	220	UT 35
100	4"	246	138	334	270	UT 35

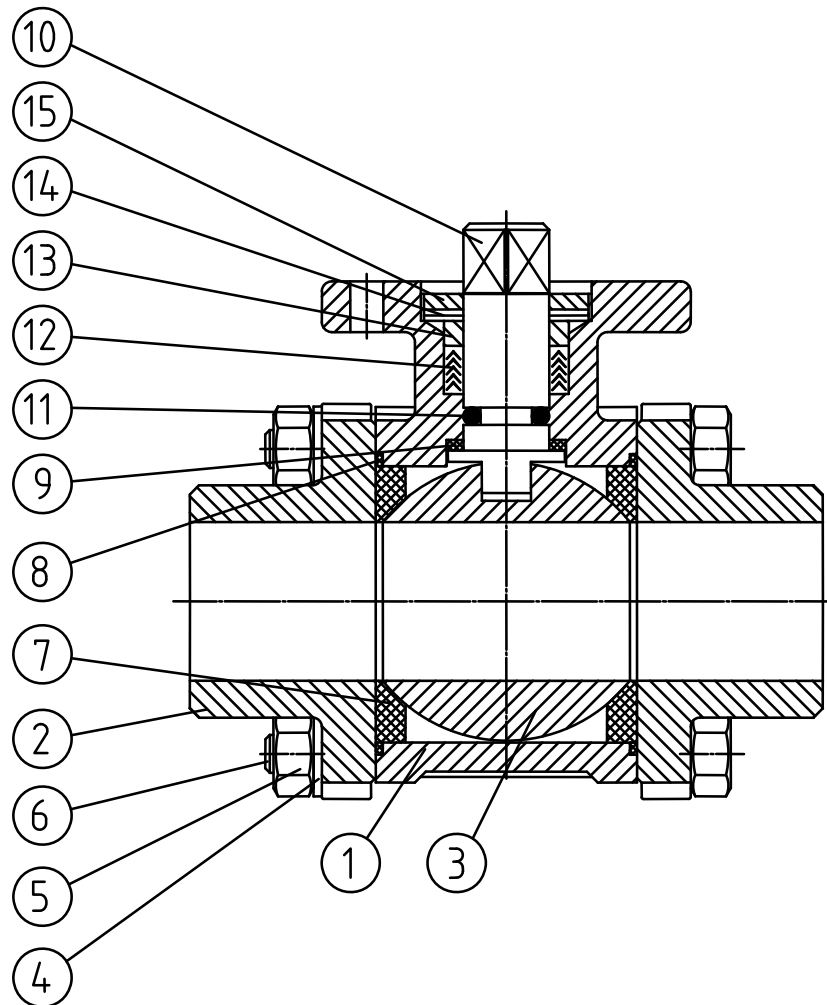
ball valve with rotating drive - PE = pneumatic single-acting

DN	A	B	C	D	rotating drive	
8	1/4"	165	85	161	70	UT 15s4
10	3/8"	165	85	161	70	UT 15s4
15	1/2"	165	85	161	75	UT 15s4
20	3/4"	197	85	165	90	UT 17s4
25	1"	197	85	173	100	UT 17s4
32	1 1/4"	177	96	201	110	UT 20s4
40	1 1/2"	239	96	211	125	UT 25s4
50	2"	230	113	239	150	UT 30s4
65	2 1/2"	246	138	294	190	UT 35s4
80	3"	391	185	358	220	UT 50s4
100	4"	391	185	385	270	UT 50s4

Actuator design 5 bar control pressure. Overall length according to DIN 3202 M3, dimensions in mm. Temperature range -10°C to 200°C (see pressure-temperature curve).

3-part ball valve of stainless steel  
 DIN/ISO top flange, welding end (B)  
 PN 63 DN 10–100

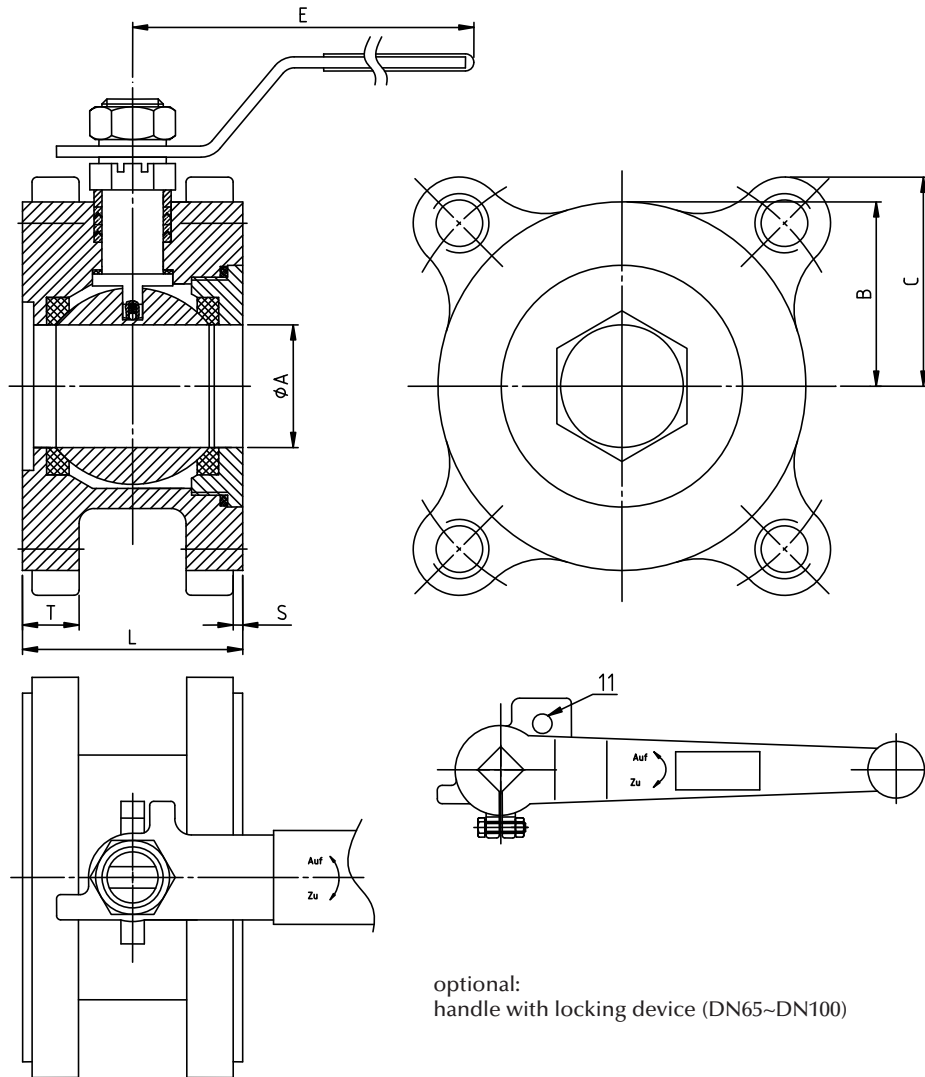
materials



pos.	description	amount	materials
1	housing	1	1.4408
2	ens piece	2	1.4408
3	ball	1	1.4401
4	washer	4-12	1.4301
5	nut	4-12	1.4301
6	screw	4-12	1.4301
7	ball seal	2	reinforced PTFE
8	housing seal	2	PTFE

pos.	description	amount	materials
9	clamping ring	1	PTFE
10	operating shaft	1	1.4401
11	O-ring	1	Viton
12	operating shaft seal	1 set	PTFE
13	stuffing box	1	1.4301
14	spring	2	spring steel
15	nut	1	1.4301

compact flange ball valve (F) or stainless steel  
hand lever, full opening  
PN 40/PN 16 DN 15–100



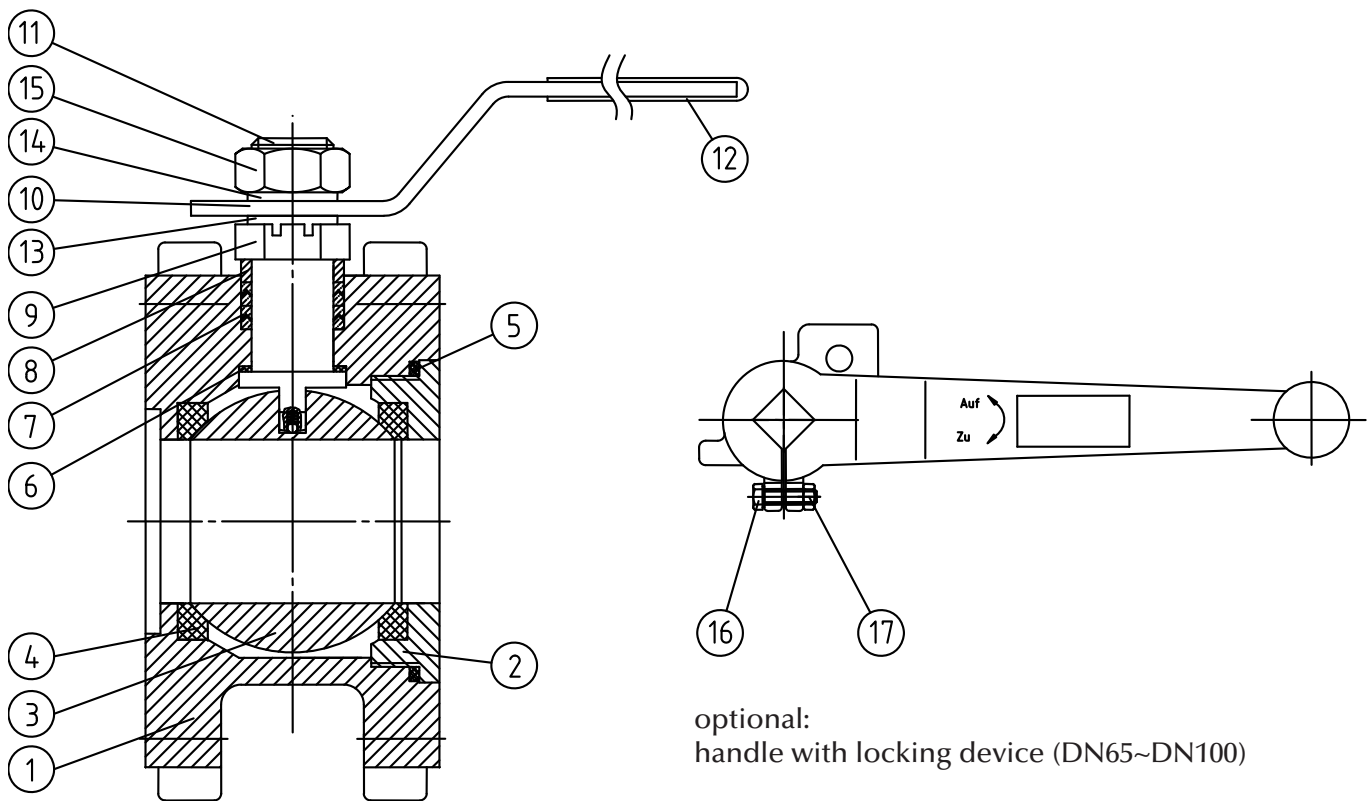
optional:  
handle with locking device (DN65~DN100)

DN	Ø A	B	C	E	L	S	T	M
15	1/2"	15	23.6	36.93	133	40.0	2	M12
20	3/4"	20	32.0	40.47	133	44.0	2	M12
25	1"	25	35.0	40.55	133	53.0	2	M12
32	1 1/4"	32	42.3	53.69	228	58.4	2	M16
40	1 1/2"	38	47.3	57.33	228	62.0	3	M16
50	2"	50	52.55	64.19	228	78.0	3	M16
65	2 1/2"	64	80.0	71.27	315	100.0	3	M16
80	3"	76	90.0	87.16	315	120.0	3	M16
100	4"	96	111.0	103.15	315	152.0	3	M16

Dimensions in mm.  
Temperature range -10°C to 200°C  
(see pressure-temperature curve).

compact flange ball valve (F) or stainless steel  
hand lever, full opening  
PN 40/PN 16 DN 15–100

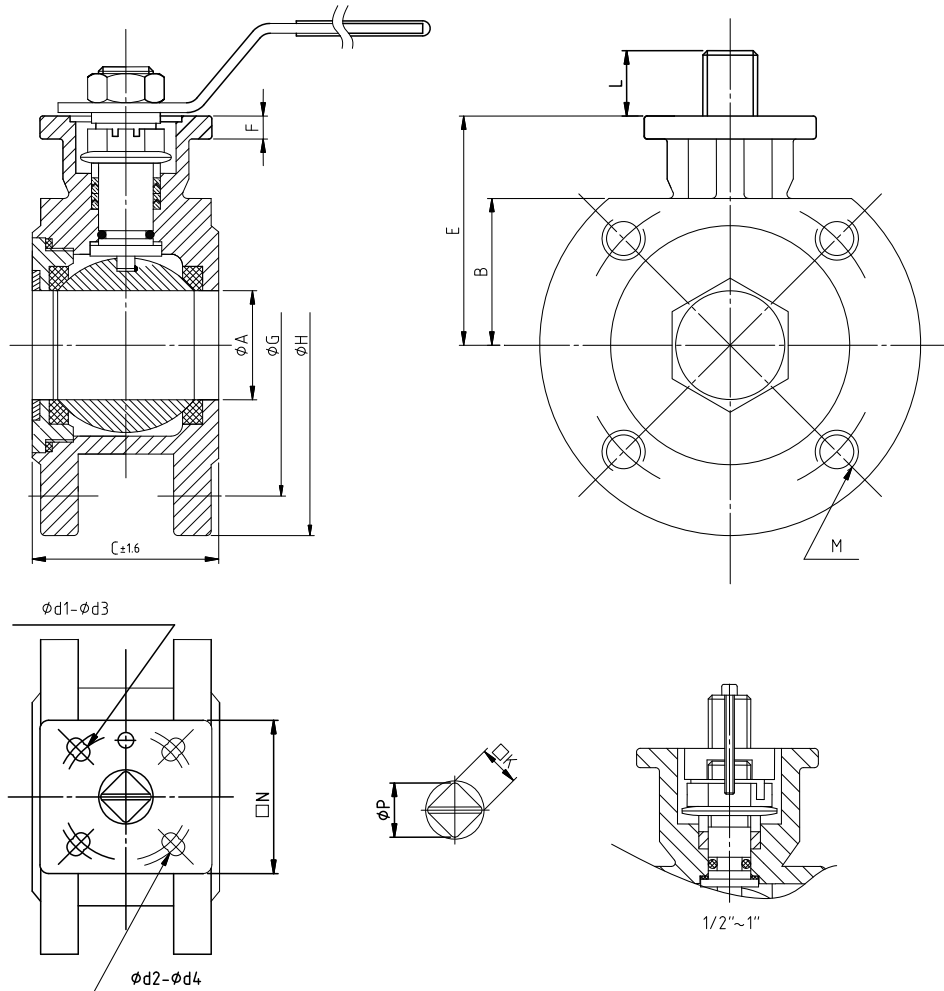
materials



pos.	description	amount	materials
1	housing	1	1.4408
2	end piece	2	1.4408
3	ball	1	1.4401
4	ball seal	2	reinforced PTFE
5	housing seal	2	PTFE
6	clamping ring	1	PTFE
7	operating shaft seal	1 set	PTFE
8	stuffing box ring	1	1.4301
9	stuffing box	1	1.4301

pos.	description	amount	materials
10	handle	1	1.4301
11	operating shaft	1	1.4401
12	handle coat	1	plastics
13	locking ring	1	1.4301
14	washer	1	1.4301
15	nut	1	1.4301
16	screw	1	1.4301
17	nut	1	1.4301

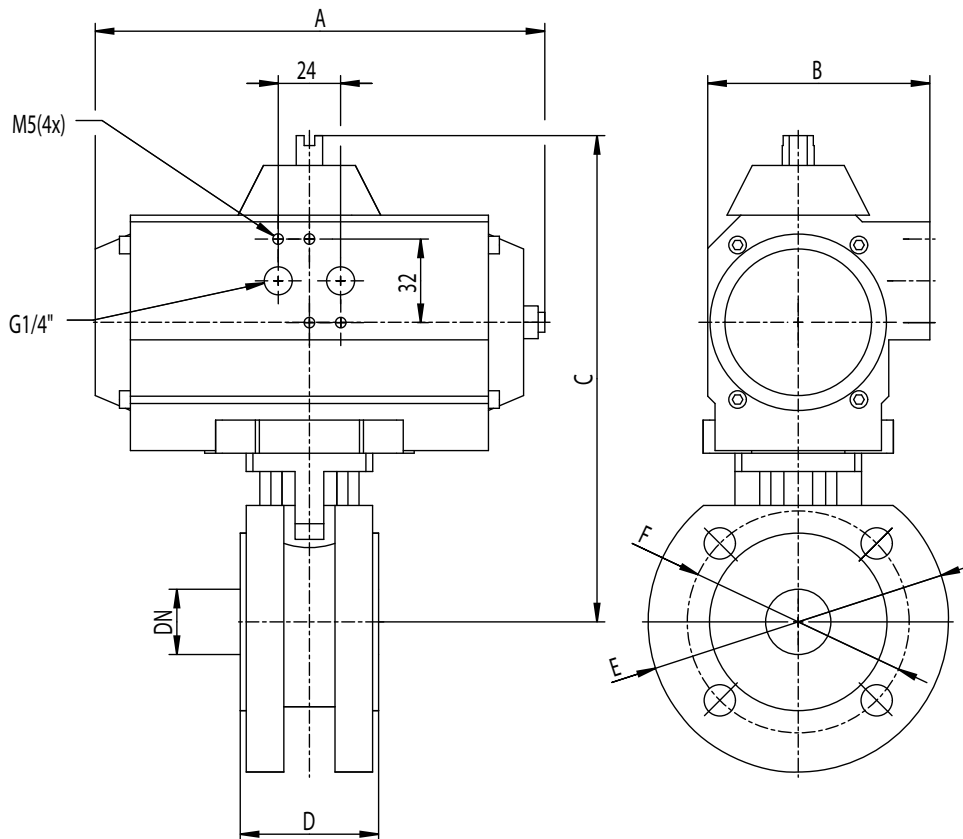
compact flange ball valve (F) of stainless steel  
hand lever, DIN/ISO 5211 top flange, full opening  
PN 16 / 40 DN 15–100



DN	C	Ø G	Ø H	Ø A	B	E	F	□ N	ISO 5211	Ø d1	Ø d2	Ø d3	Ø d4	□ K	Ø P	L	M	
1/2"	15	40	65	95	15	34.5	60.0	6.3	43.5	F03/F04	36	42	6.0	5.5	9	11.11	8	M12x1,75
3/4"	20	44	75	105	20	38.5	64.3	7.0	43.5	F03/F04	36	42	6.0	5.5	9	11.11	11	M12x1,75
1"	25	53	85	115	25	44.6	64.6	7.0	48.5	F04/F05	42	50	5.5	7.0	11	11.11	11	M12x1,75
1 1/4"	32	58.4	100	135	32	51	70.2	7.0	48.5	F04/F05	42	50	5.5	7.0	11	11.11	11	M16x2
1 1/2"	40	62	110	145	38	55	76.3	7.2	70.0	F05/F07	50	70	7.0	8.5	14	19.05	17	M16x2
2"	50	78	125	155	50	63	85.5	7.2	70.0	F05/F07	50	70	7.0	8.5	14	19.05	15	M16x2
2 1/2"	65	100	145	185	65	73.5	105	10.6	-	F07	-	70	-	9.0	17	22.22	14	M16x2
3"	80	120	160	200	76	94	123	10.6	-	F07	-	70	-	9.0	17	22.22	18	M16x2
4"	100	152	180	220	96	105	132	12.6	-	F07/F10	70	102	9.0	10.5	17	22.22	15	M16x2

DN 15 – DN 50 flanges according to PN 40, DN 65 – DN 100 flanges according to PN 16.  
Integrated top flange according DIN/ISO 5211 for direct mounting of the actuation.  
Dimensions in mm. Temperature range -10°C to 200°C (see pressure-temperature curve).

compact flange ball valve (F) of stainless steel  
 pneumatic part turn actuator (PD = pneumatic double-acting; PE = pneumatic single-acting), DIN/ISO 5211 top flange, full opening  
 PN 16 / 40 DN 15–100



ball valve with rotating drive - PD = pneumatic double-acting

DN		A	B	C	D	E	F	rotating drive
15	G 1/2"	119	67	161	40	95	65	UT 05
20	G 3/4"	119	67	165	44	105	75	UT 05
25	G 1"	165	85	186	53	115	85	UT 15
32	G 1 1/4"	165	85	191	58	135	100	UT 15
40	G 1 1/2"	165	85	219	62	145	110	UT 15
50	G 2"	177	96	229	78	155	125	UT 20
65	G 2 1/2"	239	96	248	100	185	145	UT 25
80	G 3"	246	138	285	120	200	160	UT 30
100	G 4"	246	138	328	152	220	180	UT 35

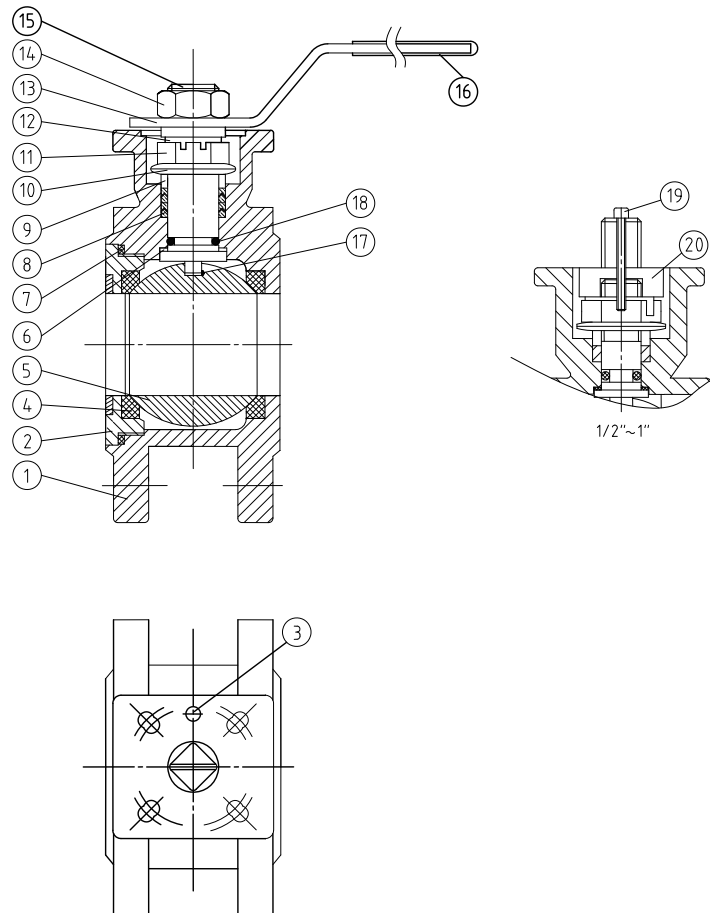
ball valve with rotating drive - PE = pneumatic single-acting

DN		A	B	C	D	E	F	rotating drive
15	G 1/2"	165	85	181	40	95	65	UT 15s4
20	G 3/4"	197	85	185	44	105	75	UT 17s4
25	G 1"	197	85	186	53	115	85	UT 17s4
32	G 1 1/4"	177	96	213	58	135	100	UT 20s4
40	G 1 1/2"	239	96	219	62	145	110	UT 25s4
50	G 2"	230	113	248	78	155	125	UT 30s4
65	G 2 1/2"	246	138	313	100	185	145	UT 35s4
80	G 3"	391	185	331	120	200	160	UT 50s4
100	G 4"	391	185	380	152	220	180	UT 50s4

Actuator design 5 bar control pressure.  
 Dimensions in mm. Temperature range -10°C to 200°C (see pressure-temperature curve).

compact flange ball valve (F) of stainless steel  
 hand lever or pneumatic part turn actuator, DIN/ISO 5211 top flange, full opening  
 PN 16 / 40 DN 15–100

materials

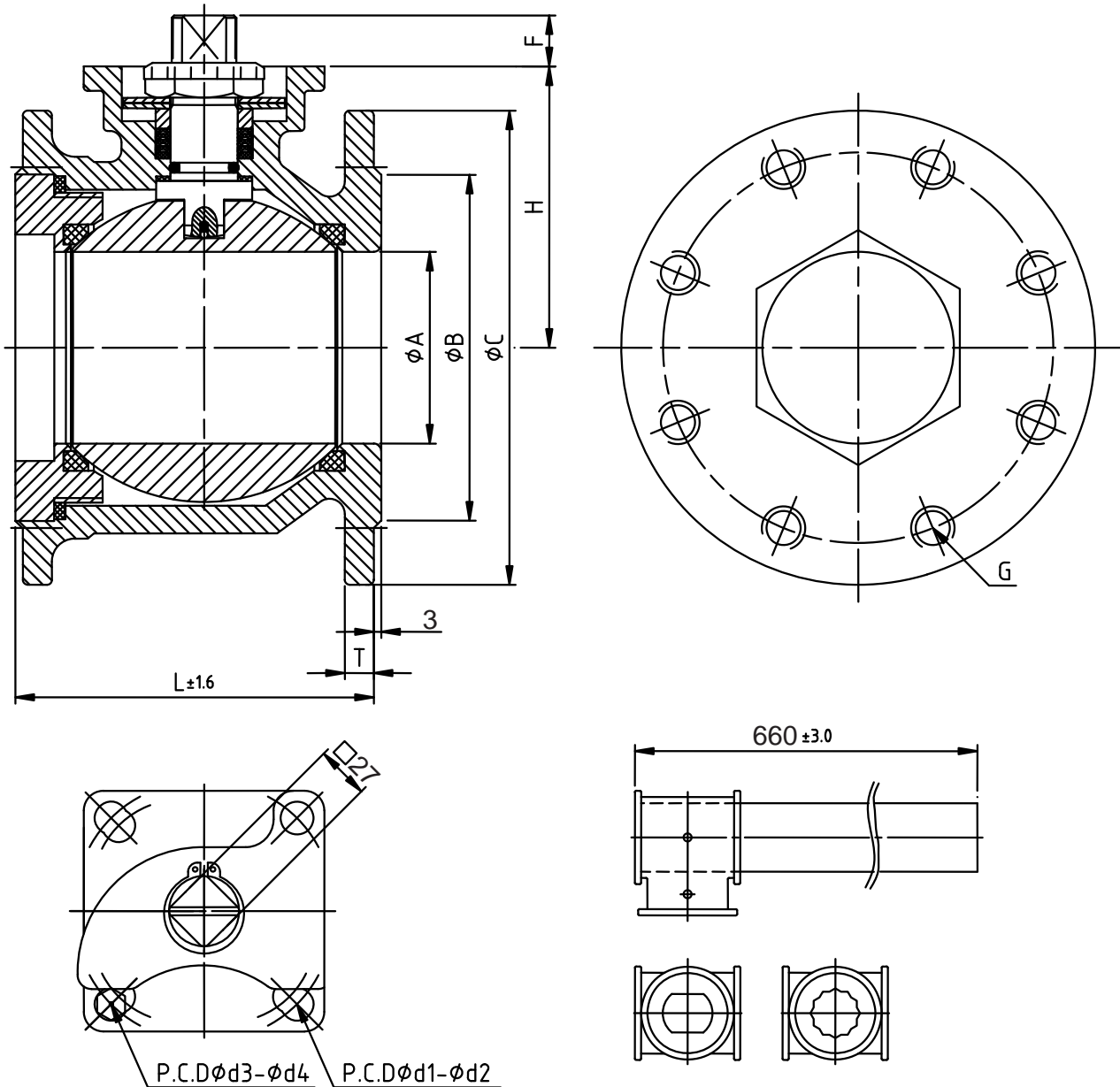


pos.	description	amount	material
1	housing	1	1.4408
2	screw-in fitting	1	1.4408
3	body stop	1	1.4301
4	ball seal	2	reinforced PTFE
5	ball	1	1.4401
6	clamping ring	1	PTFE
7	housing seal	1	PTFE
8	operating shaft seal	1 set	PTFE
9	stuffing box	2	1.4301
10	disc spring	2	1.4310

pos.	description	amount	material
11	stuffing box	1	1.4301
12	circlip	1	1.4301
13	handle	1	1.4301
14	nut	1	1.4301
15	operating shaft	1	1.4401
16	handle coat	1	plastics
17	antistatic (optional)	1	1.4301
18	O-ring	1	VITON
19	pin	1	1.4301
20	pusher dog	1	1.4301



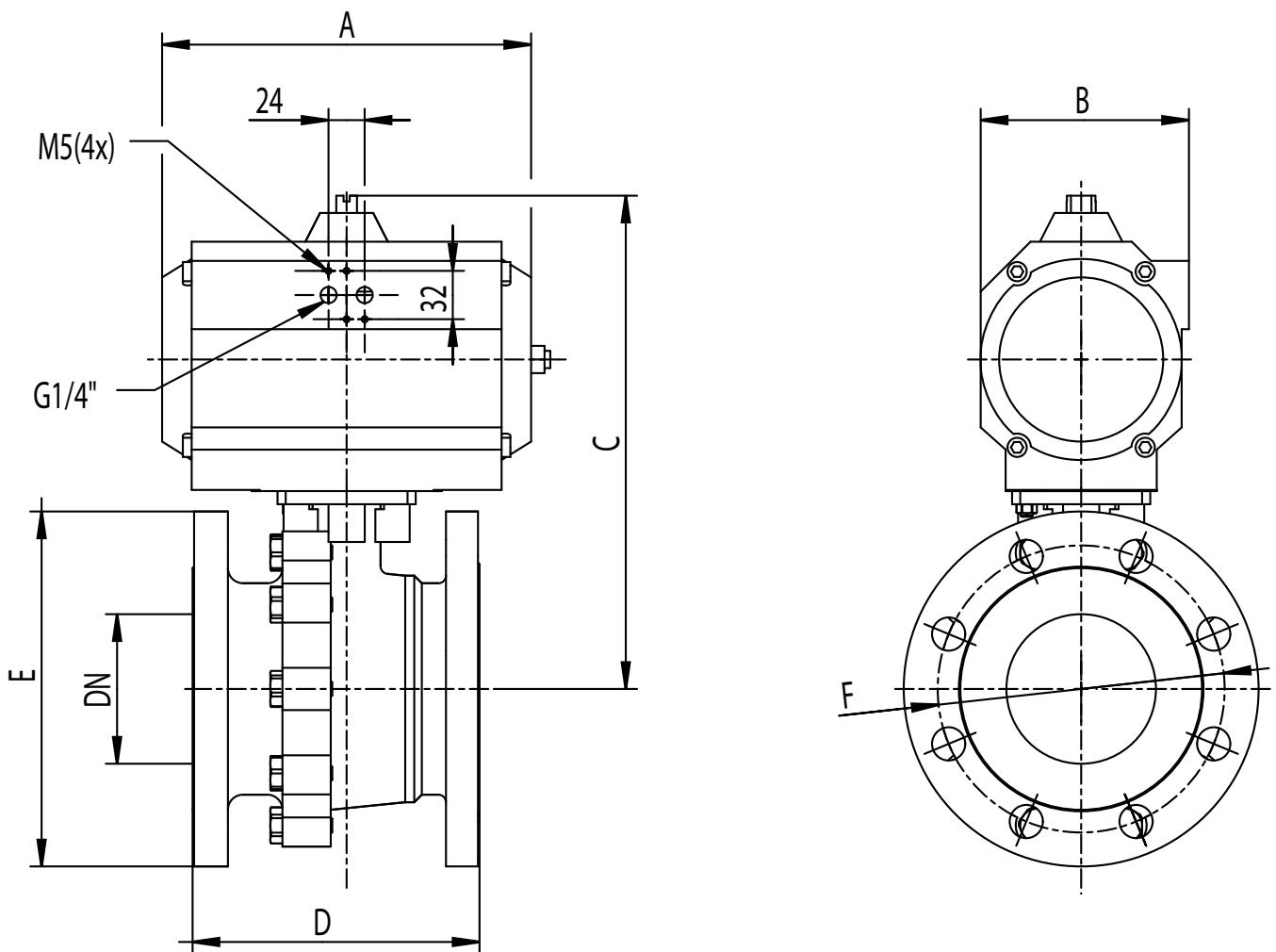
compact flange ball valve (F) of stainless steel  
 hand lever, DIN/ISO 5211 top flange, reduced opening  
 PN 16 DN 125–200



DN	Ø A	Ø B	Ø C	T	L	G	H	Ø d1	Ø d2	Ø d3	Ø d4	ISO 5211	F	
5"	125	114	188	250	22	180	M16x2	157.5	102	10.5	125	12.5	F10/F12	36
6"	150	135	212	285	22	215	M16x2	172.5	102	10.5	125	12.5	F10/F12	36
8"	200	152	268	340	24	236	M20x2,5	185.0	-	-	125	13.0	F12	37.5

Integrated top flange according DIN/ISO 5211 for direct mounting of the actuation.  
 Dimenstions in mm. Temperature range -10°C to 200°C (see pressure-temperature curve).  
 min. control air pressure 5 bar

compact flange ball valve (F) of stainless steel  
 pneumatic part turn actuator (PD = pneumatic double-acting; PE = pneumatic single-acting), DIN/ISO 5211 top flange, reduced opening  
 PN 16 DN 125–200



ball valve with rotating drive - PD = pneumatic double-acting

DN	A	B	C	D	E	F	rotating drive
125 5"	351	151	366	183	250	210	UT 45
150 6"	391	185	405	218	385	240	UT 50
200 8"	418	185	427	239	340	295	UT 55

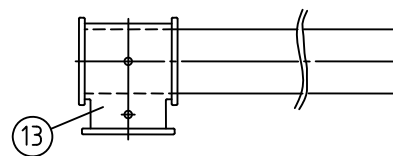
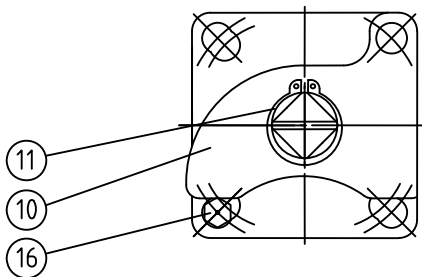
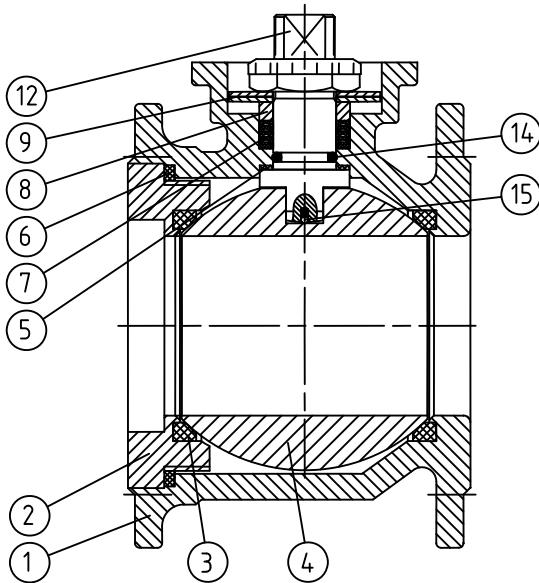
ball valve with rotating drive - PE = pneumatic single-acting

DN	A	B	C	D	E	F	rotating drive
125 5"	418	185	400	183	250	210	UT 55s4
150 6"	444	235	487	218	385	240	UT 60s4
200 8"	502	235	489	239	340	295	UT 65s4

Integrated top flange according DIN/ISO 5211 for direct mounting of the actuation.  
 Actuator design 5 bar control pressure.  
 Dimensions in mm. Temperature range -10°C to 200°C (see pressure-temperature curve).

compact flange ball valve (F) of stainless steel  
 hand lever or pneumatic part turn actuator, reduced opening  
 PN 16 DN 125–200

materials



pos.	description	amount	material
1	housing	1	1.4408
2	screw-in fitting	1	1.4408
3	ball seal	2	reinforced PTFE
4	ball	1	1.4401
5	clamping ring	1	PTFE
6	housing seal	1	PTFE
7	operating shaft seal	1 set	PTFE
8	stuffing box	1	1.4301

pos.	description	amount	material
9	disc spring	2	1.4310
10	body stop plate	1	1.4408
11	circlip	1	1.4301
12	operating shaft	1	1.4401
13	handle	1	1.4301
14	O-ring	1	Viton
15	antistatic ball	1	1.4301
16	body stop	1	A2-70

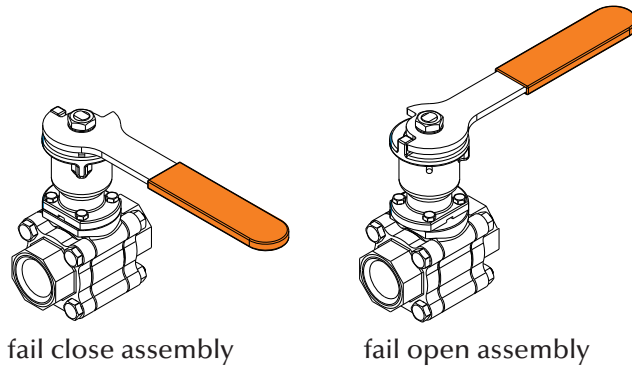
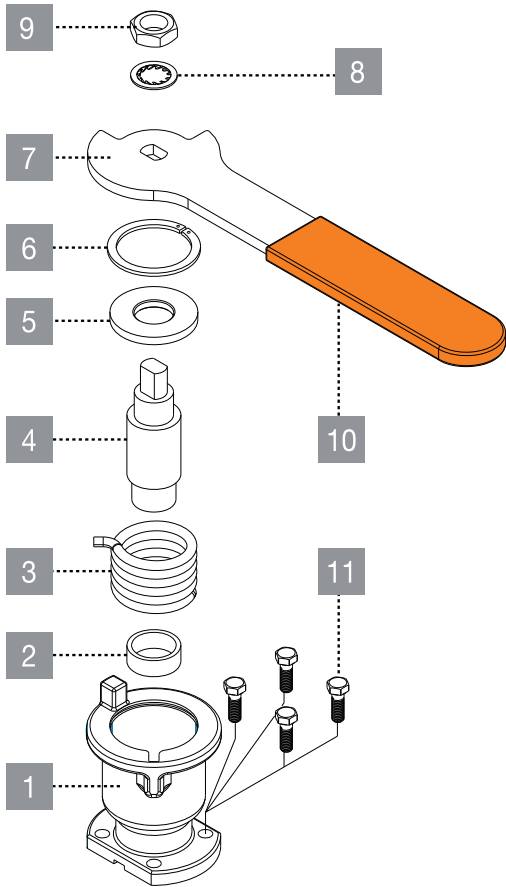


## Description

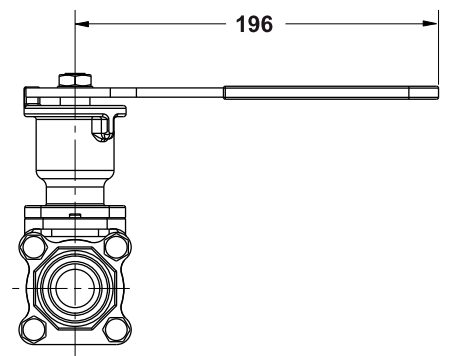
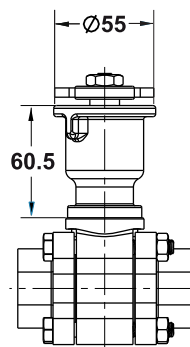
- size range:  
1/2" – 1 1/4" (DN 15 – 32)
- features:  
provides dependable automatic closing or opening of manual valves
- applications:  
sampling, by-pass, steam letdown, draining, pressure relief
- stroke end output torque:  
11 Nm (97 in-lb)
- materials:  
stainless steel
- connection:  
direct mounting acc. to ISO 5211
- safety features:  
tamper proof spring loaded unit for direct assembly to valve
- other features:  
fail to close or fail to open mountable  
locking device



can easily locked with a padlock



item	description	material specifications	qty.
1	body housing	stainless steel ASTM A351 CF8M	1
2	bottom bearing	PTFE	1
3	spring	spring steel ASTM A401	1
4	stern	stainless steel 17-4 PH	1
5	top bearing	BRASS ASTM B121	1
6	locking clip	spring steel DIN 472	1
7	handle	stainless steel AISI 430	1
8	serrated washer	stainless steel	1
9	handle nut	stainless steel 316 ASTM A194	1
10	handle sleeve	VINYL PLASTISOL	1
11	housing screws	stainless steel A2-70 ISO 4014	4

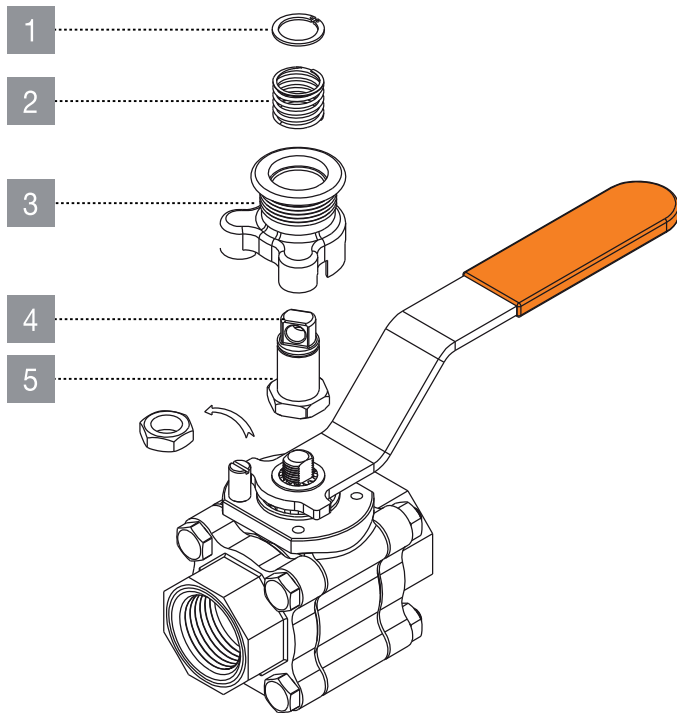


## CAUTION!

While operating the spring loaded device, hold lever firmly and release gently. Slamming the unit might cause human injuries or handle deformation.

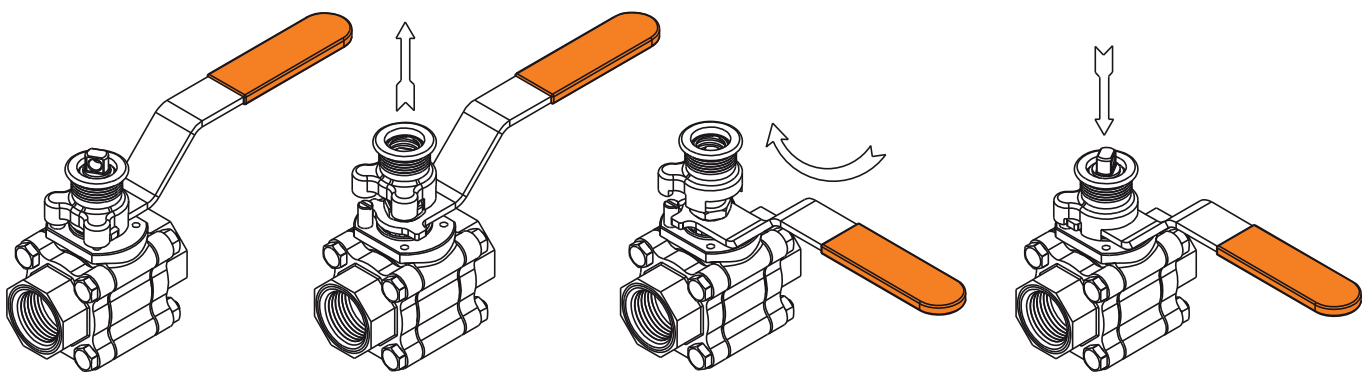
## Locking device

The robust device locks the valve handleat open or close position and allow to add a pad lock (up to 6 mm) for misuse prevention. The spring-load construction ensure handle is lock in position at all valve installation orientations and under vibrating conditions. An accidentally push / pull / turn of the handle is prevented.



item	description
1	retaining ring
2	spring
3	housing
4	shaft groove
5	shaft

## Locking device operation



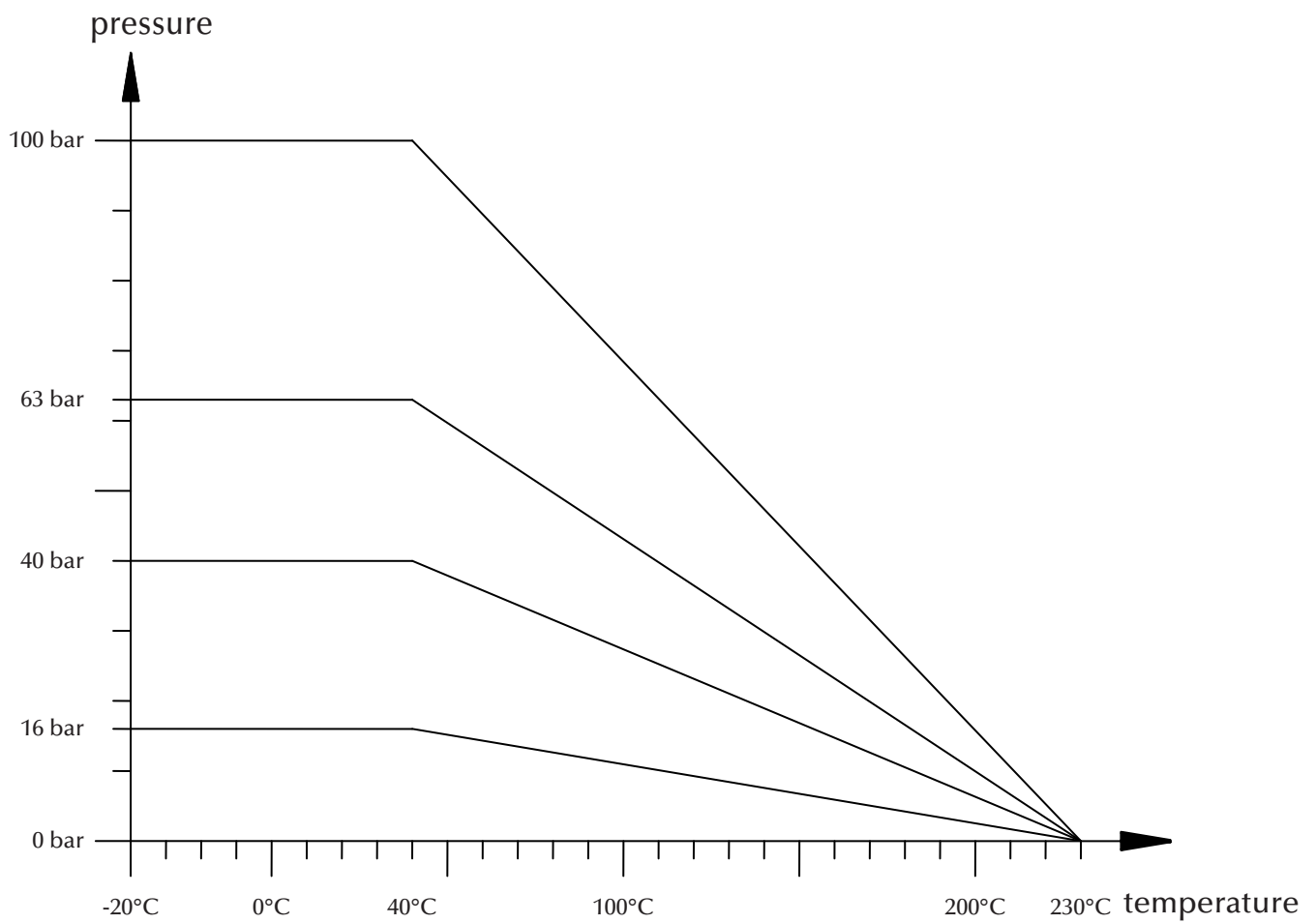
valve locked in open position

lift locking device housing above valve stop

turn the valve handle 90° locking device housing to the close position

release the locking device housing down to lock

pressure-temperature curve



Please notice: These values do not apply for medium steam!  
For steam application please confer with our sales team.



## Germany + Switzerland

**MARTIN LOHSE GmbH**  
Unteres Paradies 63  
89522 Heidenheim  
Phone: +49 7321 755-0  
sales@lohse-gmbh.de  
www.lohse-gmbh.de

## Australia, New Zealand, Indonesia, Singapore, Malaysia

**P.T. VOITH PAPER**  
Jl. Permata V Lot EE - 1  
Kawasan Industri KIIC  
Karawang 41361, INDONESIA  
Phone : +62 267 419 719  
Fax : +62 267 419 717

## Austria (Papier- + Zellstoffindustrie, Abwasser + Kläranlagen) + CZ, SK, SLO, SRB, HR, H

**Peter Rejter**  
Handel Mazzetti-Str. 85  
3100 St. Pölten  
Phone: +43 2742 77366  
Fax: +43 2742 77366  
office@industriearmaturen.at

## Austria

### Klinger Gebetsroither GmbH & Co KG

Am Kanal 8-10  
2352 Gumpoldskirchen  
Phone: +43 2252 60 71 00 3029  
Fax: +43 2252 60 71 00 3010  
gerhard.praxmarer@gebetsroither.at  
www.gebetsroither.at

## Belgium

**Hanwel Belgium N.V.**  
Winninglaan 15  
9140 Temse  
Phone: +32 3 7110353  
Fax: + 32 3 7110579  
info@hanwel.be  
www.hanwel.be

## Chile

**INTERTECH**  
Prat 116, Of 31  
Curicó, Chile  
phone +56.075.322033  
www.inter-tech.cl  
n.flores@inter-tech.cl

## People's Rep. Of China

**Shanghai Fier Mechanical Co. LTD**  
Room B4, 15/F HuaFu Bldg.  
No. 585 LongHua xi Rd.  
ShangHai, China 200232  
Phone: +86 21 54591038  
Fax: +86 21 54240616  
MP: 13611665381  
shfier@163.com  
www.fier.com.cn

## Denmark

**Uni-Valve A/S**  
Sydvestvej 138 – 140  
2600 Glostrup  
Phone: +45 43 438200  
Fax: +45 43 437475  
mail@uni-valve.com  
www.uni-valve.com

## Finland

**KLINGER Finland Oy**  
Tinankuja 3  
02430 Masala  
Phone: +358 10 4001011  
info@klinger.fi  
www.klinger.fi

## France, MA, TN, DZ

**T.N.P.**  
30 Boussegré  
58140 Lormes  
Phone: +33 1 559711-11  
Fax: +33 1 48835207  
contact@tnp.fr  
www.tnp.fr

## Great Britain

**Voith Turbo Ltd.**  
6 Beddington Farm Road  
Croydon, Surrey CRO, 4XB  
Phone: +44 208 6673013  
Fax: +44 208 6670403  
matthew.healy@voith.com

## Greece

**Niko Mikopoulos, BSc.**  
Metron Str. 28  
17123 Nea Smyrni-Athens  
Phone: +30 6 98 305 10 70  
n.mikopoulos@nm-bc.com

## India

**Antrieb Technik Private Limited**  
59 (old 359) Sidco Industrial Estate  
Ambattur  
Chennai-600 098  
Tamilnadu / INDIA  
Phone: +91 44 262-58303  
Fax: +91 44 2819-3718  
antrieb.technik@gmail.com

## Israel

**P.B.A Wiesner Agencies Ltd.**  
P. O. Box 4622  
Petach-Tikva 49277  
Phone: +972 3 9052111  
Fax: +972 3 9052110  
ofra@pba.co.il

## Italy

**Techno Paper S.R.L.**  
Viale Certosa 269  
20151 Milano (MI)  
Phone: +39 02 78627750  
Fax: +39 02 45471638  
info@techno-paper.com  
www.techno-paper.com

## Japan

**Voith IHI Paper Technology Co.Ltd.**  
River City M-SQUARE 7F  
2-1-6 Tsukuda, Chuo-ku  
1040051 Tokyo  
Phone: +81 3 6221 3108  
Fax: +81 3 6221 3126

## Korea

**C.S-Automation Co., Ltd. (Customer Satisfaction Automation)**  
#804 Sejung Technovalley  
279-5 Songjeong-Dong  
Heungdeok-Gu  
Cheongju-Si  
South Korea. 361-290  
Phone: +82 43 276 1332  
Fax: +82 43 278 1332  
changseol@korea.com

## Netherlands

**Hanwel B. V.**  
Jan Tinbergenstraat 209  
7559 SP Hengelo  
The Netherlands  
Phone: +31 74 2650000  
Fax: +31 74 2650001  
verkoop@hanwel.com  
www.hanwel.com

## Norway

**KSB Norge AS**  
Holtbråtveien 69  
1449 Drøbak  
Phone: +47 917 19995  
firmapost@ksb.com  
www.ksb.com/en-no

## Philippines

**R. Dan and Co., Inc.**  
Lot 6-9 Block 5 Greenway Business  
Park  
Bulihan, Silang,  
Cavite Philippines 4118  
Phone: +63 960 690 0244  
ester.poe@robertdan.com.ph  
www.robertdan.com.ph

## Poland

**Waldemar Kulicki**  
ul. Heweliusza 37/4  
87-148 Papowo Toruńskie  
Phone: +48 509 46 64 25  
waldemar-kulicki@wp.pl  
www.wkulicki.eu

## Rep. of South Africa

**Voith Turbo (Pty) Ltd**  
P.O. Box 13171  
Witfield, 1467  
Gauteng, SOUTH AFRICA  
Phone: +27 11 418 4000  
Fax: +27 11 418 4080  
info.vtza@voith.com  
www.rsa.voithturbo.com

## Spain, Portugal

**CELPAP EQUIPOS, S.L.**  
C/Amposta, 14-18  
08174 Sant Cugat del Vallés  
(Barcelona)  
Phone +34 93 415 18 75  
celpap@celpap.com  
www.celpap.com

## Sweden

**PA-Ventiler AB**  
Sagbäcksvägen 3B  
43736 Lindome  
Phone: +46 31 992500  
Fax: +46 31 992503  
info@paventiler.se  
www.paventiler.se

## Switzerland

**dampfEXPERTE GmbH**  
Häsiweg 33  
5018 Erlinsbach  
Phone: +41 62 5448090  
roger.fehr@dampfexperte.ch  
www.dampfexperte.ch

## Taiwan

**E-Chen Engineering Co., Ltd.**  
3F-3, No. 151, Sec. 4,  
Hsin-Yi Road,  
Taipei, Taiwan, R.O.C.  
Phone: +886 22 7056185  
Fax: +886 22 7045967  
echen123@ms15.hinet.net

## Thailand

**Weston Myer Ltd.**  
8 Soi Seri-Thai 58  
Seri-Thai Road  
10510 Minburi Bangkok  
Phone: +66 2 3745869  
Fax: +66 2 375-1179  
comm1@westonmyer.com

## Turkey

**Sanrep Kağıt San. ve Tic. Ltd. Şti.**  
Altiyol, Kuşdili Caddesi No:19/7  
H.Fazlıoğlu İş Merkezi  
34714 Kadıköy – İSTANBUL  
Phone: +90 216 345 40 48  
Fax: +90 216 330 73 12  
sanrep@sanrep.com  
www.sanrep.com

## USA, Canada, Mexico

**Voith Paper Inc.**  
2200 N. Roemer Rd.  
Appleton, WI 54912-2237  
Phone: +1 920 – 358 – 2396  
Fax: +1 920 – 731 – 5126  
VPAWSpareParts@voith.com